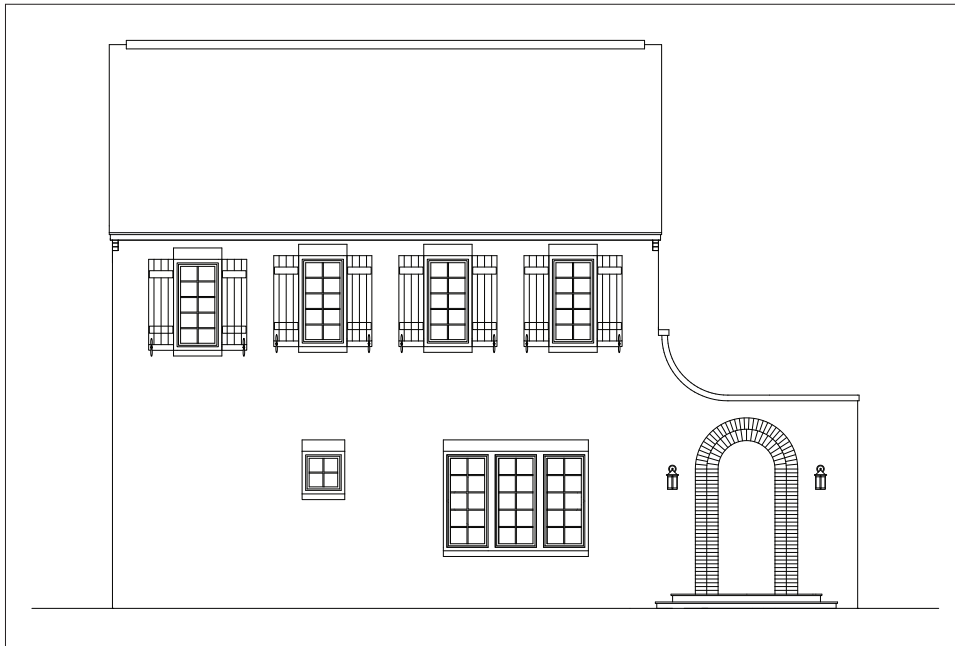


Hampstead Living



THE HOXTON

\$449,900

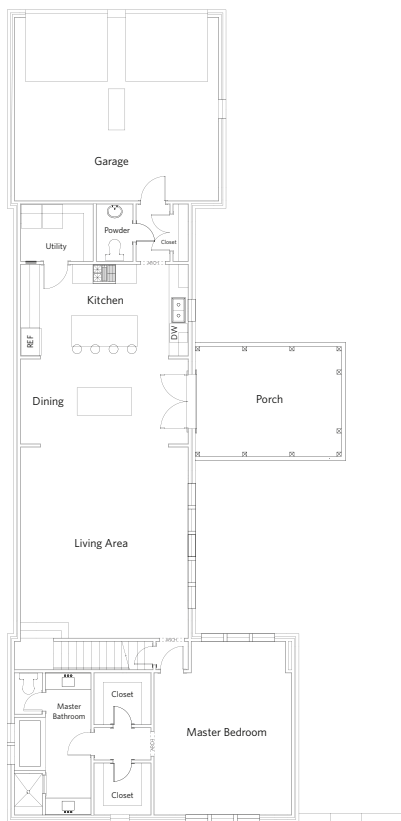
4 Bedroom, 3.5 Bath

2,877 sq. ft conditioned approx

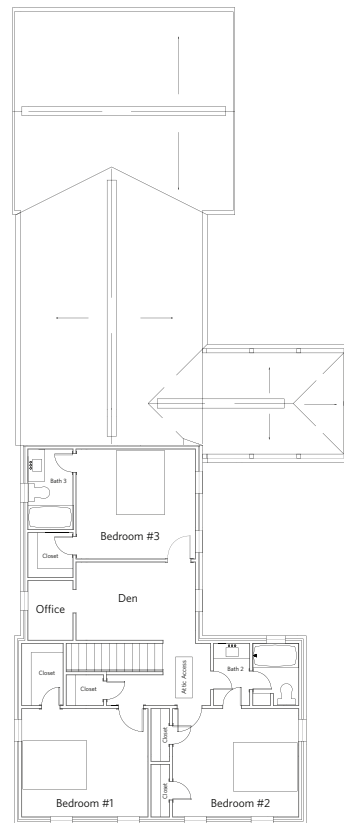
Hampstead's most popular plan, the Hoxton offers open plan living in a design that can only be found at Hampstead. Centered around your private courtyard space, life in the Hoxton is easy with its beautiful interior finishes and contemporary layout.

Features Include:

- Premium Insulation Package
- Granite Counters
- Metal Clad LoE Windows
- Brick Exterior
- Attached Garage
- Hardwood Floors Finished On-Site
- Spacious Private Courtyard
- Ground Floor Master
- Post-Tension Foundation
- No-Rot Materials
- Premium Light Fixtures
- Energy Star Appliances
- And More



1st Floor



2nd Floor



For more information, visit the Hampstead Information Center. Open Daily, 334.270.6730 | hampsteadliving.com | [@hampsteadliving](https://www.instagram.com/hampsteadliving)

