

# Hampstead Living



Photo shows a previously built Hudson A model.

## THE HUDSON A

\$459,900

4 Bedroom, 3.5 Bath

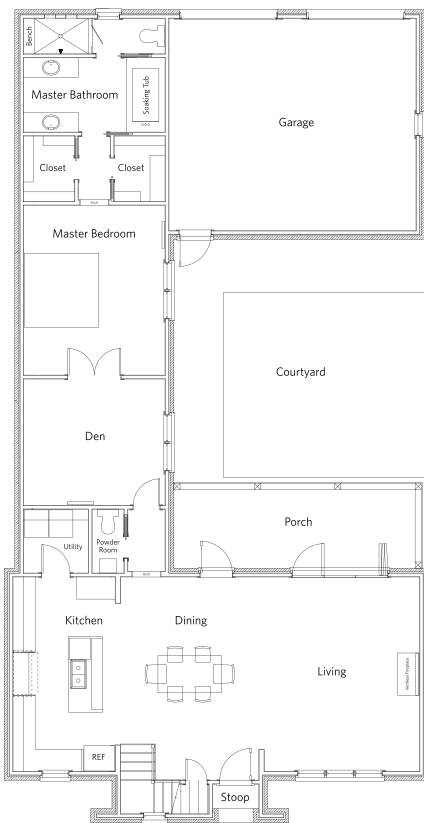
2,578 sq. ft conditioned approx

3,213 sq. ft total approx

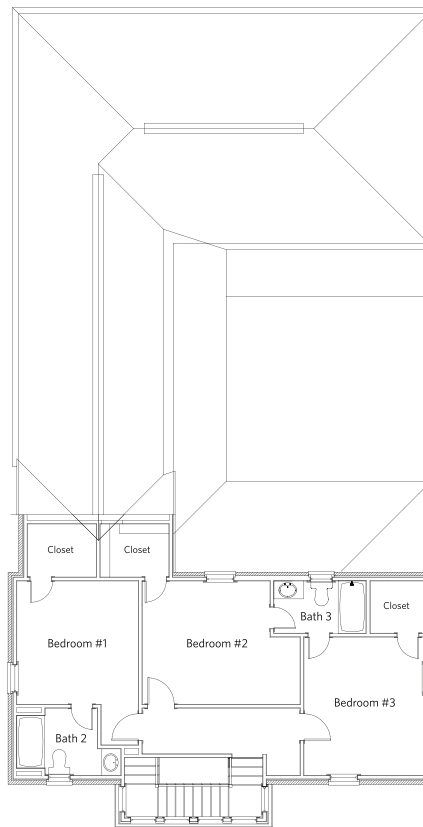
One of Hampstead's best selling plans, The Hudson combines a spacious floor plan with private courtyard living. The living and dining rooms overlook your backyard, while the master suite and adjacent study are truly generous. Fixtures and finishes are beautiful, while the exterior creates a stunning streetfront view.

### Features Include:

- Premium Insulation Package
- Granite Counters
- Pella Lo-E Windows
- Brick Exterior
- Attached Garage
- Hardwood Floors Finished On-Site
- Spacious Private Courtyard
- Ground Floor Master
- Post-Tension Foundation
- No-Rot Materials
- Premium Light Fixtures
- Energy Star Appliances
- And More



1st Floor



2nd Floor



For more information, visit the Hampstead Information Center. Open Daily, 334.270.6730 | [hampsteadliving.com](http://hampsteadliving.com) | [@hampsteadliving](https://www.instagram.com/hampsteadliving)

