

Hampstead Living



THE SOUTHGATE

\$319,900

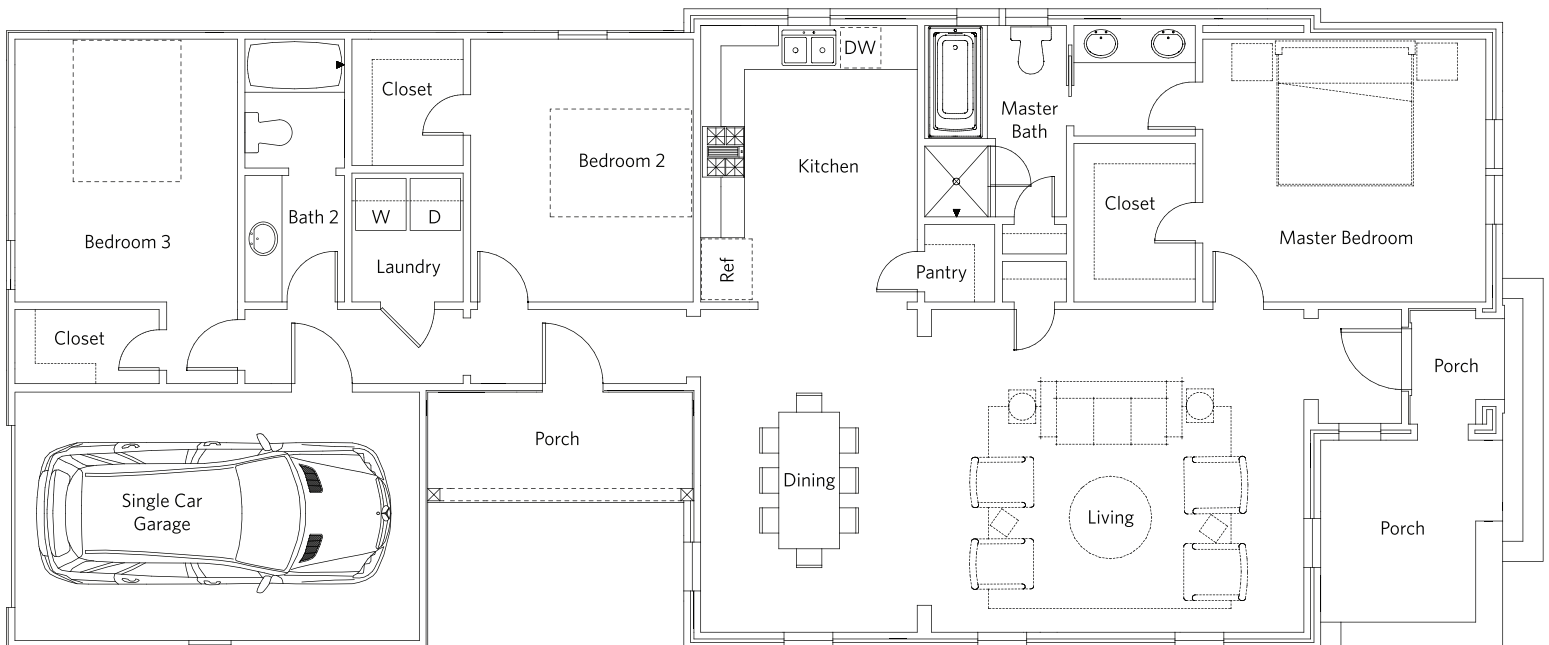
3 Bedroom, 2 Bath

1,737 sq. ft conditioned approx

This charming home is part of our new "Hampstead Essentials," a collection of clever new home plans under \$350,000. Now under construction on Portman Street Park, this lovely plan brings all the convenience and low maintenance living of a one-story home to our Hampstead buyers.

Everything you need is in this plan - from industry-leading finishes and interior design features to energy efficient appliances, insulation, and tankless water heater. Great for re-sale values, this home offers spacious bedrooms, popular living and dining layouts, great storage and a park location that can't be beat. Talk to us about this new plan soon before it is snapped up!

Features Include: Single-Storey Home • Portman Street Park View • Post-Tension Foundation • No-Rot Materials • Brick Exterior • Premium Insulation Package • Pella Metal Clad Lo-E Windows • Granite Counters • Premium Light Fixtures • Energy Star Appliances • Side Porch • Covered Entry • Single Car Garage • Much more!



For more information, visit the Hampstead Information Center. Open Daily, 334.270.6730 | hampsteadliving.com | [@hampsteadliving](https://www.instagram.com/hampsteadliving)

