

HAMPSTEAD INVENTORY HOMES



7911 Portman St.

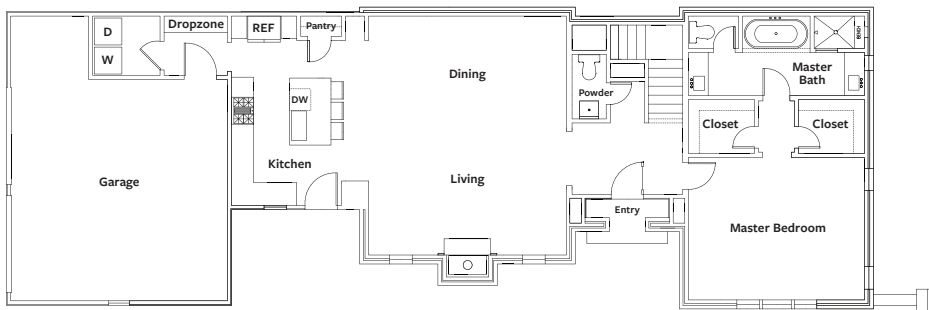
The Primrose

\$445,900

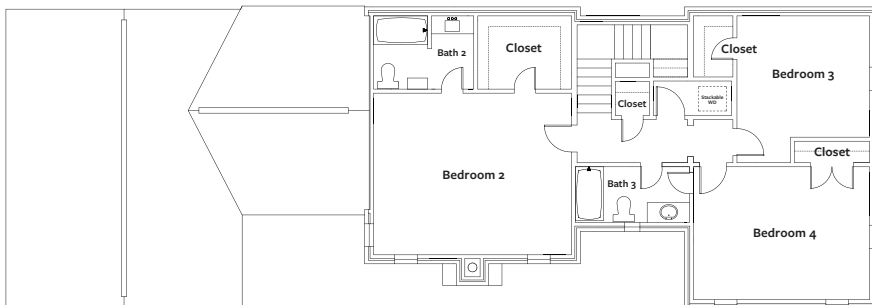
4 Bedroom, 3.5 Bath
2,643 sq. ft. conditioned approx.
Lot S-24

The Move In Ready Primrose is a new beautiful Hampstead courtyard home with striking street presence. It showcases a spacious open living, dining, and kitchen layout. Features include, premium insulation package, quartz countertops, Pella LoE windows, brick exterior, attached 2 car garage, hardwood floors, private courtyard, post tension foundation, premium light fixtures and more. The gourmet kitchen has sleek top-of-the-line appliances, no maintenance quartz countertops, and connects to an airy dining room. The open floor plan offers spacious living areas with a lot of design and flexibility. The home is located a few steps from Hampstead Lake.

1st Floor



2nd Floor



Features Include:

- Appliances: Energy Star, Stainless Steel
- Building Materials: No-Rot Materials
- Cabinetry: Custom
- Countertops: Quartz
- Exterior: Painted Brick
- Flooring: Pre-Engineered Wood
- Foundation: Post-Tension
- Garage: Attached, 2 Car
- Insulation: Premium Insulation Package
- Lighting: Premium Light Fixtures
- Master: Ground Floor
- Master Closets: His and Hers
- Windows: Pella Lo-E
- Yard: Private Courtyard

Builder: Mercer Home



For more information, visit our Hampstead Sales Home located at 7802 Portman Street.
334.270.6730 | sales@hampsteadcommunityrealty.com | www.hampsteadliving.com