

HAMPSTEAD INVENTORY HOMES



7619 Wigmore St.

The Chelsea

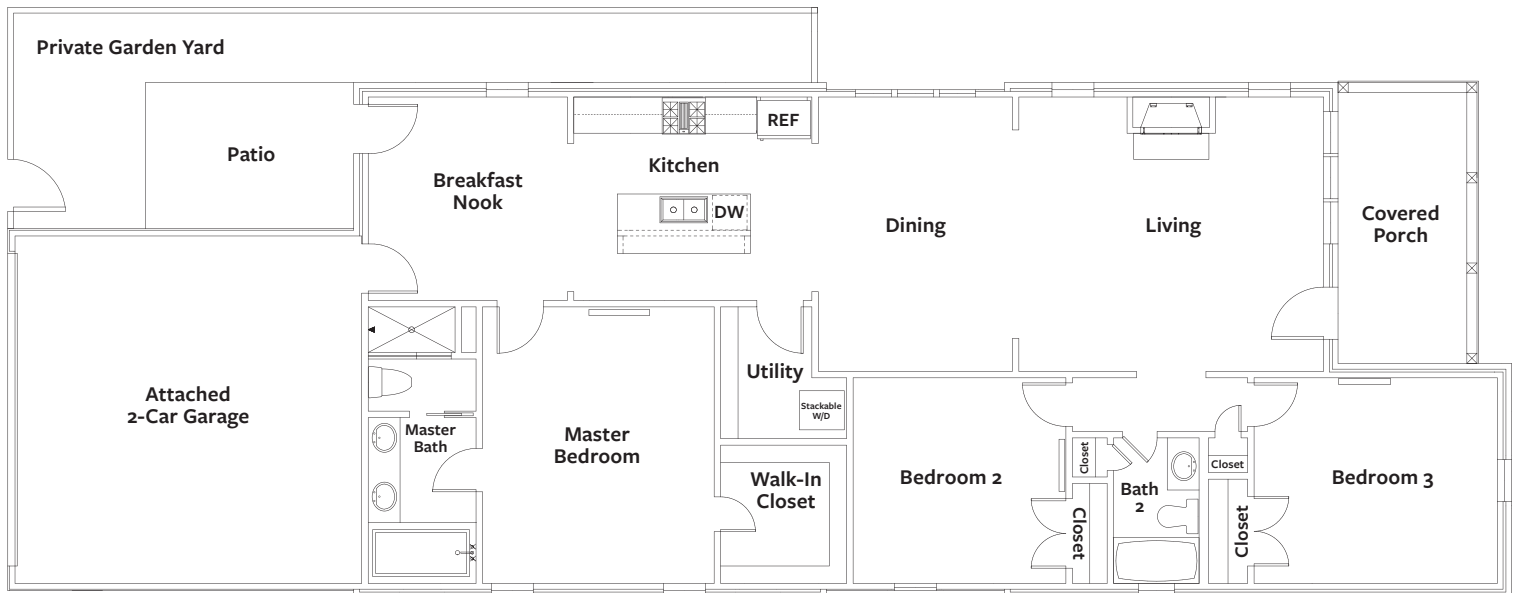
\$322,800

3 Bedroom, 2 Bath
1,798 sq. ft. conditioned approx.
Lot F-4A

The Chelsea brings all the convenience and low maintenance living of a 1-story home to our Hampstead buyers. Located steps away from the Town Center, its charming street frontage surprises visitors to the Chelsea. Once inside, the plan opens up to a 3 bedroom home full of space. It also includes an attached 2-car garage, dining space, breakfast nook, backyard patio and much more!

Features Include:

- Appliances: Energy Star
- Building Materials: No-Rot Materials
- Countertops: Granite
- Entry: Covered Entry with Front Porch
- Exterior: Brick, Hardi Siding
- Flooring: Hardwood, Carpet, Ceramic Tile
- Foundation: Post-Tension
- Garage: Attached, 2 Car
- Insulation: Premium Insulation Package
- Lighting: Premium Light Fixtures
- Master Closet: Spacious Walk-in
- Windows: Pella Lo-E
- Yard: Private Garden Yard with Patio



For more information, visit our Hampstead Sales Home located at 7802 Portman Street.
334.270.6730 | sales@hampsteadcommunityrealty.com | www.hampsteadliving.com

