

Hampstead Inventory Homes



7808 Portman St.

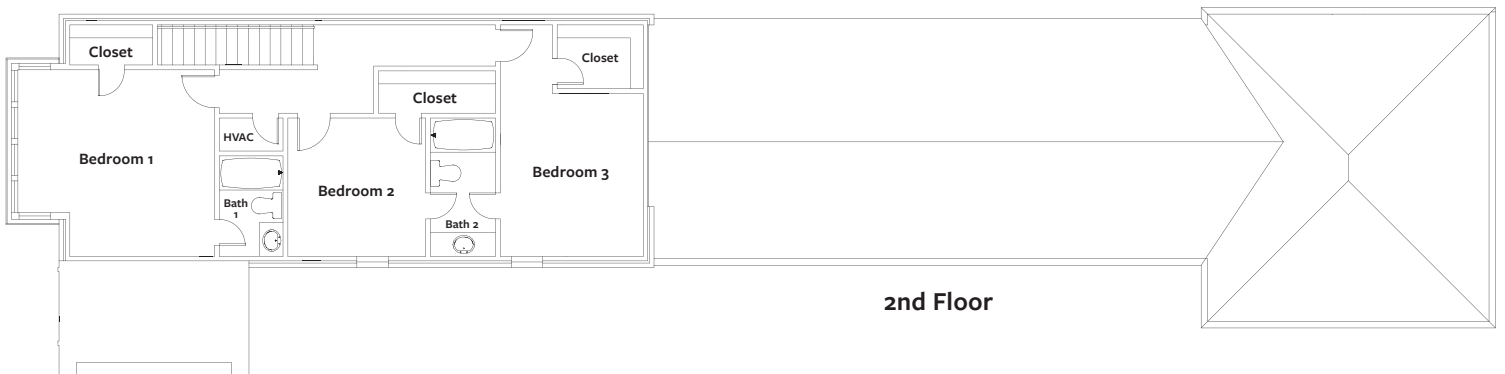
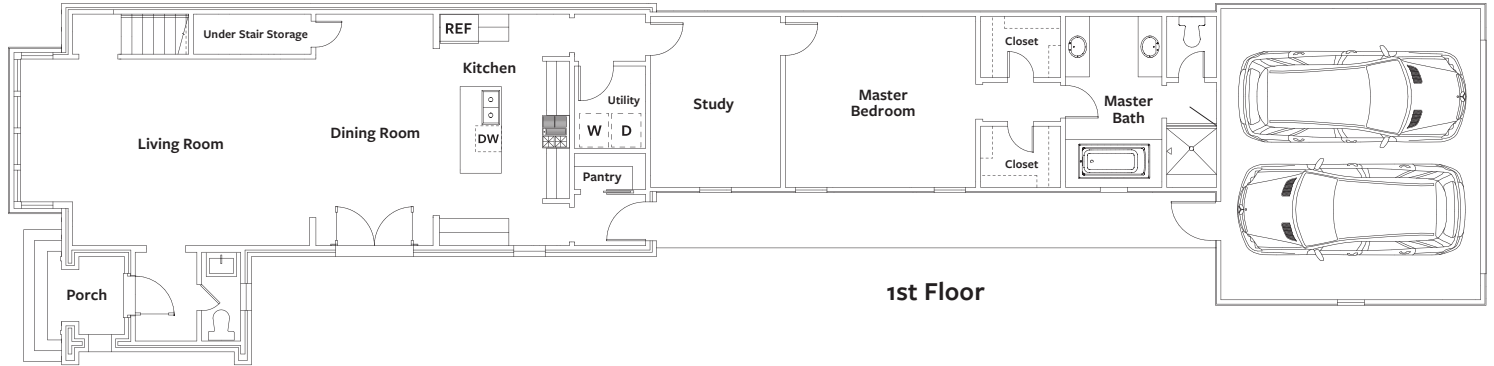
The Berkley A

\$468,500

4 Bedroom, 3.5 Bath
2,535 sq. ft. conditioned approx.
Lot N-15

Features Include:

- Appliances: Energy Star
- Building Materials: No-Rot Materials
- Cabinets: Custom with Soft Close Hinges
- Countertops: Quartz
- Entry: Covered Entry with Front Porch
- Exterior: Brick, Hardi Siding
- Flooring: Pre-Finished Wood, Carpet, Ceramic Tile
- Foundation: Post-Tension
- Garage: Attached, 2 Car
- Insulation: Premium Insulation Package
- Lighting: Premium Light Fixtures
- Master: Ground Floor with Attached Study
- Master Closets: His & Hers Walk-in Closets
- Windows: Pella Low-E
- Yard: Private Courtyard



For more information, visit our Hampstead Sales Home located at 7802 Portman Street.
334.270.6730 | sales@hampsteadcommunityrealty.com | www.hampsteadliving.com

