

Hampstead Inventory Homes



7979 Portman St.

The Sutton

\$346,900

3 Bedroom, 2.5 Bath

2- Car Brick Garage Addition: + \$29,000

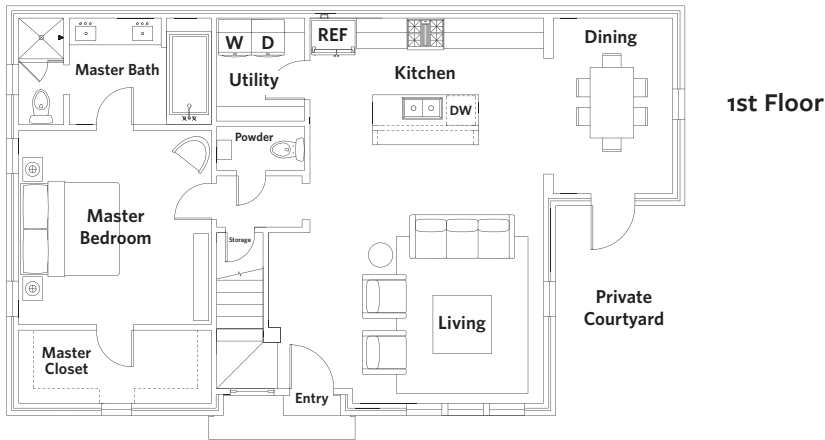
1,942 sq. ft. conditioned approx.

Lot S-36

The Sutton is a beautiful courtyard home with striking street presence. It showcases a spacious open living, dining, and kitchen layout. The gourmet kitchen features sleek top-of-the-line appliances, no maintenance quartz countertops, and connects to an airy dining room. The open floor plan offers spacious living areas with a lot of design and flexibility. Enjoy the downstairs master suite with 2 bedrooms and sitting area upstairs. This home is located on the Portman Street Park and steps from Hampstead Lake!

Features Include:

- Appliances: Samsung, Stainless Steel
- Building Materials: No-Rot Materials
- Cabinets: Custom with Soft Close Hinges
- Countertops: Quartz
- Exterior: Painted Brick, Hardi Siding
- Flooring: Polished Concrete, Carpet, Ceramic Tile
- Foundation: Post-Tension
- Insulation: Premium Insulation Package
- Lighting: Premium Light Fixtures
- Master Closets: Spacious Walk-In Closet
- Parking: 2-Car Parking Pad
- Windows: Weather Shield
- Yard: Brick Walled, Spacious Private Courtyard



For more information, visit our Hampstead Sales Home located at 7802 Portman Street.
334.270.6730 | sales@hampsteadcommunityrealty.com | www.hampsteadliving.com

