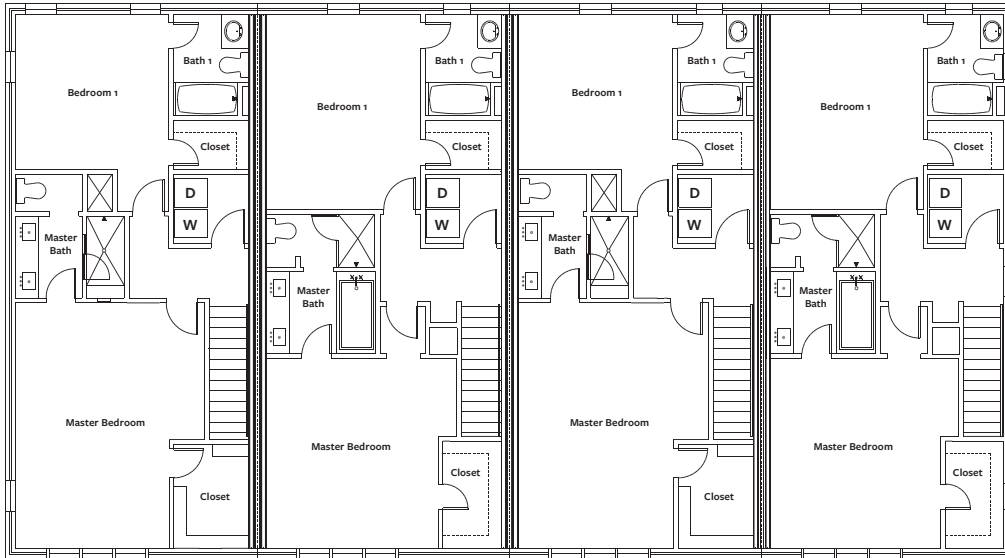
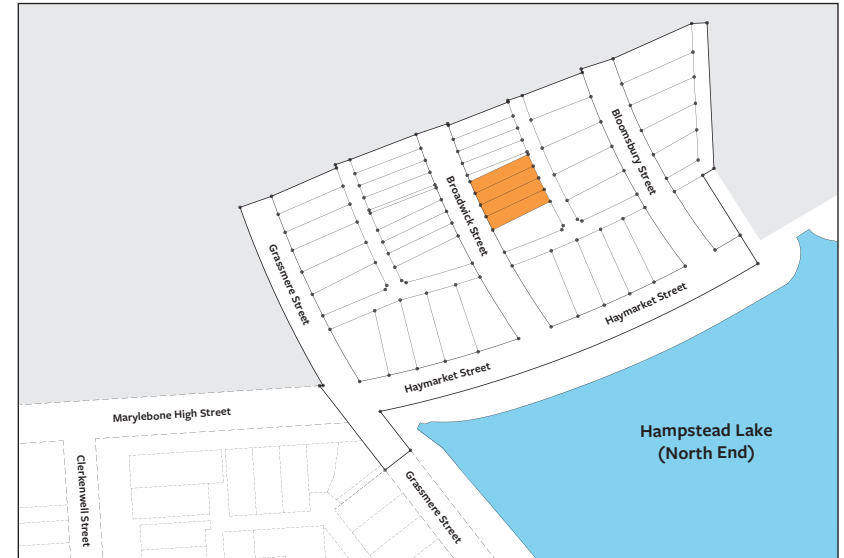
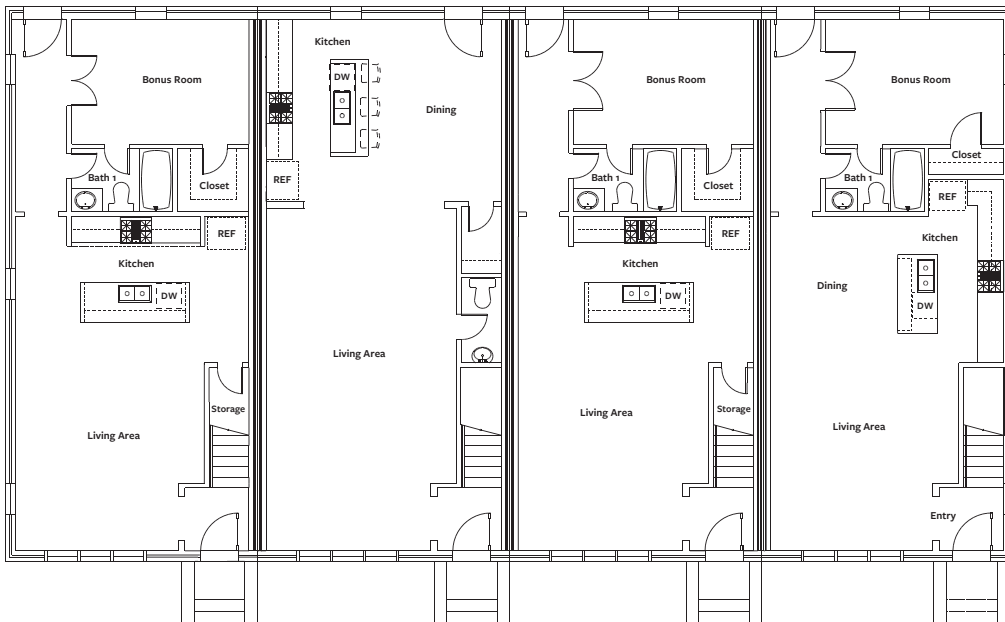


# Hampstead Inventory Homes

## Second Floor



## First Floor



## The Lexington Townhomes

### 4 Units Coming Soon to Phase 5

Talk to us about our upcoming Lexington Townhomes, and place your Lot Hold today - now is the time to customize your finishes and choose your floor plan!

#### Features Include

No-Rot Building Materials, Post-Tension Foundation, Brick Exterior, WeatherShield Windows, Premium Insulation Package, Contemporary Polished Concrete Floor plus Carpet and Ceramic Tile, Samsung Appliances, Custom Cabinetry with Soft Close Hinges and Glides, Quartz Countertops, Premium Lighting Selections, Upstairs Master Bedroom, and 2-Car Parking Pad

Stop by our Sales Home located at 7802 Portman Street  
334.270.6730 | [sales@hampsteadcommunityrealty.com](mailto:sales@hampsteadcommunityrealty.com)

Town building, design and construction are an evolving process. The Hampstead master plan, features, floor plans, and pricing may change without notice due to a variety of considerations. Any illustrations are artist's depictions only and may differ from completed improvements. This is not an offer to sell real estate property. Information is correct but not warranted. Void where prohibited by law. Equal Housing Opportunity. © 2020.

