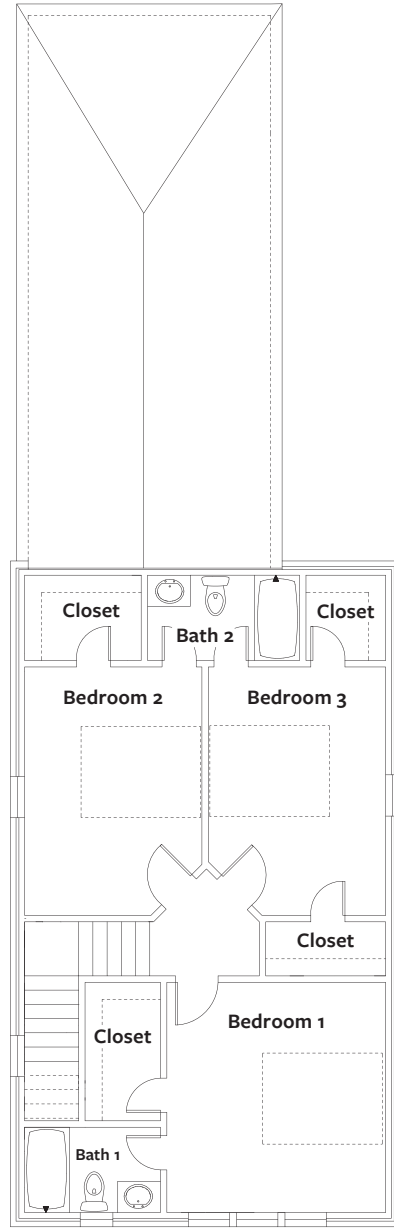
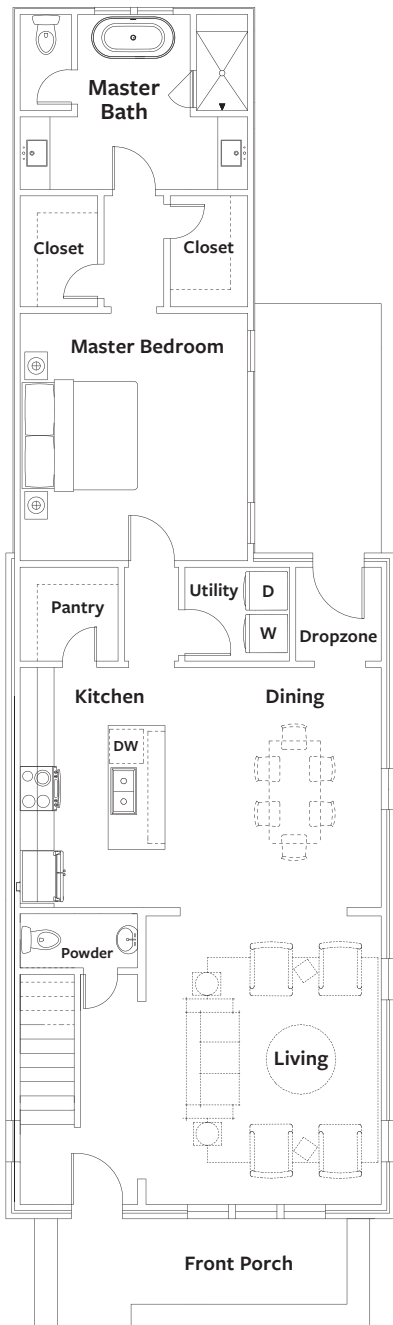


# Hampstead Inventory Homes



2nd Floor



7814 Portman St.

The Felder

\$443,500

**4 Bedroom, 3.5 Bath + 2 Car Detached Garage**  
**2,233 sq. ft. conditioned approx.**  
**Lot N-14**

**Features Include:**

- Appliances: Samsung, Stainless Steel
- Building Materials: No-Rot Materials
- Cabinets: Custom with Soft Close Hinges
- Countertops: Quartz
- Entry: Covered Entry with Front Porch
- Exterior: Brick, Hardi Siding
- Flooring: Pre-Finished Wood, Carpet, Ceramic Tile
- Foundation: Post-Tension
- Garage: Detached, 2 Car
- Insulation: Premium Insulation Package
- Master Closets: His & Hers Walk-in Closets
- Windows: WeatherShield
- Yard: Spacious Private Courtyard

Fixed on Portman Street, the Felder features an open and inviting floorplan! Views of Hampstead's Butterfly Garden grace the living room windows. The dining room and open kitchen are perfect for entertaining! The master suite includes his and hers walk-in closets and a huge master bathroom with separate vanity space. Three bedrooms are located upstairs to complete the interior living. Additional features include an open air front porch, detached 2-car garage, premium finishes, sleek selections and much more!

For more information, visit our Hampstead Sales Home located at 7802 Portman Street.  
 334.270.6730 | sales@hampsteadcommunityrealty.com | www.hampsteadliving.com

