

FOGELMAN COLLEGE OF BUSINESS & ECONOMICS BUILDING MODERNIZATION PROJECT



BREAKING GROUND
BUILDING BUSINESS
BRIGHTENING FUTURES

The Fogelman College of Business & Economics

(FCBE) transforms the lives of students and the trajectory of our city and region. Businesses across Tennessee depend on Fogelman graduates as employees, and many have gone on to become top executives of Fortune 500 corporations and successful entrepreneurs. In the past five years, enrollment in the college has grown 28%. It is projected to increase an additional 31% in the next five years, reaching a total enrollment of 5,000 undergraduate and graduate students.



THE ROBERT & AVRON FOGELMAN BUSINESS COMPLEX

The buildings that are home to the Fogelman College have been workhorses for more than 50 years, serving over 30,000 students. The FCBE buildings are the most heavily trafficked on campus, but there have been only nominal, cosmetic updates over the decades. The result is facilities that are in disrepair and that lack the mechanical and electrical infrastructure, technology and amenities to support today's student body. The current building footprint is at full capacity and cannot accommodate future enrollment growth.

The vision for a transformed Fogelman College is to create space that is student-centered, attracts and retains students and faculty and reflects the modern, collaborative workplace in the campus context. The new, attractive building will be an active learning center for students, featuring larger, more flexible and more efficient classrooms, innovative lab spaces, team rooms and a commons area where students from across campus can gather. More than that, the Fogelman College will become the welcoming gateway to the University of Memphis campus. The total cost for the project is \$85M, with \$25M already committed by the State of Tennessee.



VISION & SCOPE

Continuously-utilized &
student-centered

79K SF

New Construction

32 new or re-designed
instructional spaces:
tiered case rooms, immersive
easel rooms, flat-flex flipped
rooms & an innovation lab

Enhances college's identity
& prominence nationally

126K SF

Renovated Space

25 innovative,
tech-enhanced collaboration
& team spaces for students,
plus additional faculty
& staff offices

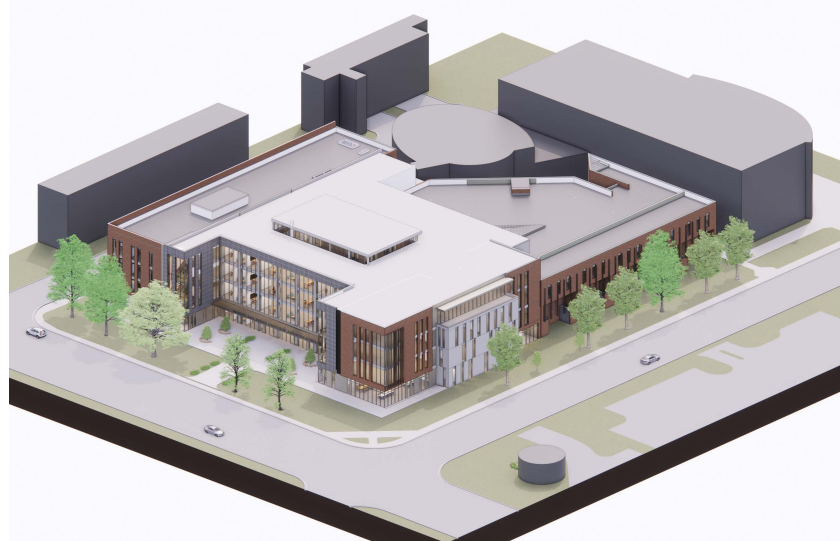
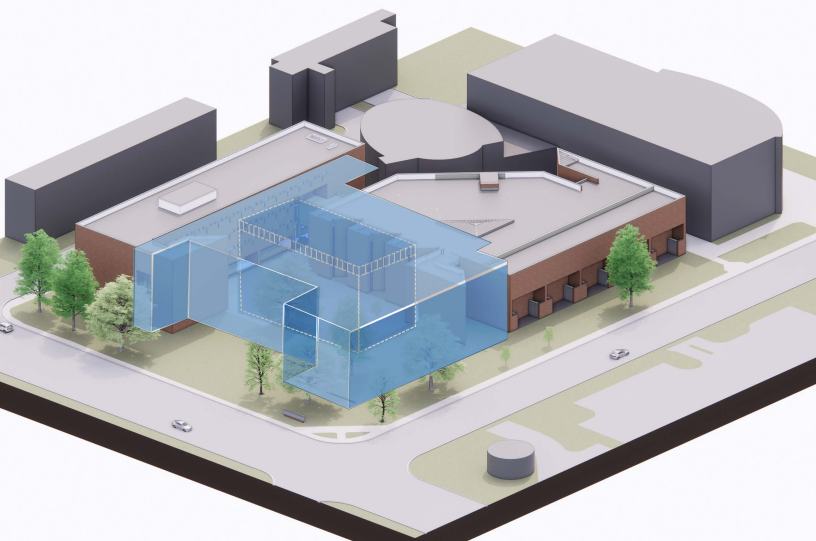
Timeless & functional,
prepares college for growth

\$85M

Total Cost

Student commons,
international café &
catering, event & training
theatre, applied research &
training centers





For more information, visit fcbebuilding.memphis.edu.



THE UNIVERSITY OF
MEMPHIS[®]
Division of
University Advancement

Michele Sides
Sr. Director of Development
Fogelman College of Business & Economics
731-435-9665 | michele.sides@memphis.edu