

Scanco Manufacturing Automation Suite

Minimize User Entry and Maximize Workflow

Scanco Manufacturing Automation is a suite of enhancements designed to provide manufacturers with a more efficient and effective manufacturing process through Sage 100 ERP's Work Order Module. With increased automation and pre-set options, Manufacturing Automation will help minimize user entry and maximize workflow.

Manufacturing Efficiency

Scanco Manufacturing Efficiency provides automation tools for streamlining W/O entry and processing with automation options for creating and closing work orders. Utilize the WO Dashboard to view Work Orders with more data and drilldowns from a single screen.

Make-to-Order

Streamline W/O creation by auto-generating work orders and sub-assemblies directly from Sales Orders in batch or by S/O line. View build availability directly from S/O Entry. (seen right)

Scheduling

Provides a Work Center dashboard for daily work center scheduling. Shows detail of Work Orders and their respective time requirements taking into consideration the capacity of the work center. Allows for rescheduling future operation steps as well.

WOScan Integration

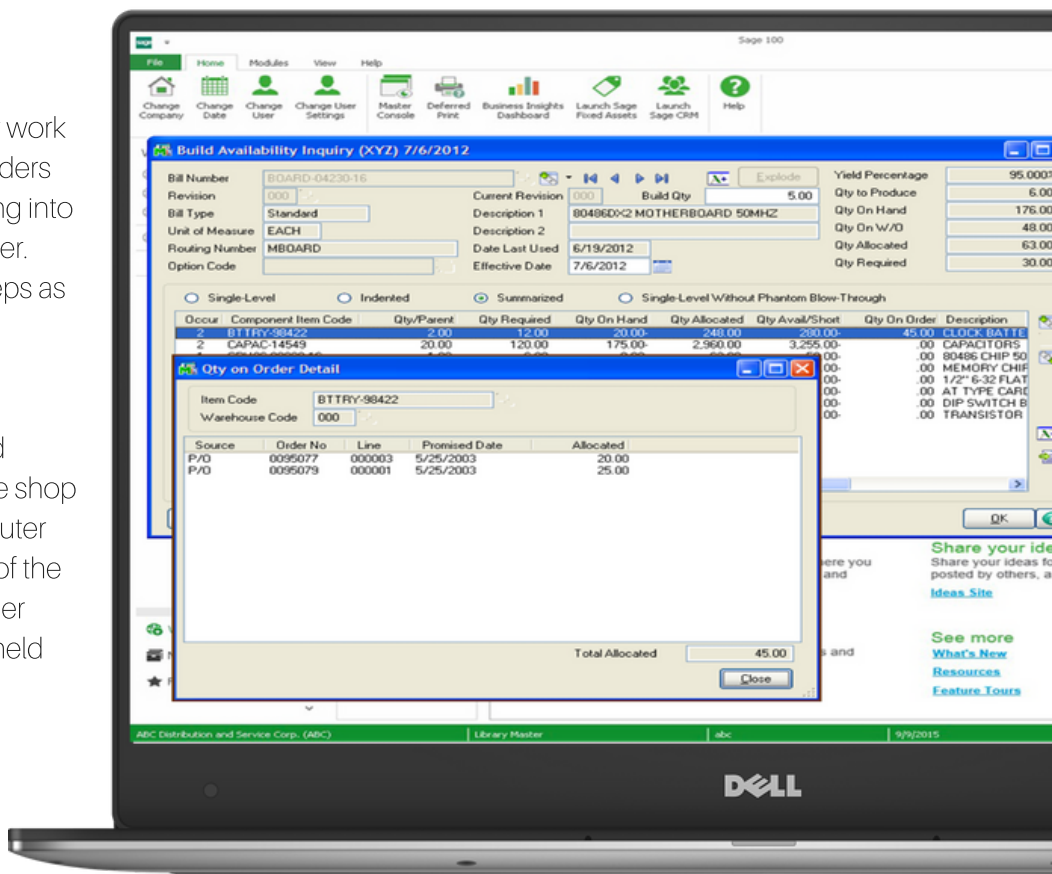
Partnering with WOScan, wireless handheld devices capture WO transaction data on the shop floor in real time, without the need for computer workstations. It prompts for and collects all of the same data you can enter through Work Order Transaction Entry, in a clean, intuitive handheld interface

Outside Processing

Tie vendors to work centers, allowing the autogeneration of purchase orders from WO Entry - Operations. The system links the PO in with the WO and prints on the WO Traveler for visibility on every level of the outside processing job.

Auto-Generate Purchase Orders

Provides on-the-fly generation of Purchase Orders from Build Availability (if using Make to Order), Sales Orders, Work Orders, MRP and even replenishment information.



SOLUTION HIGHLIGHTS

MANUFACTURING EFFICIENCY

- Discrete Work Order selection in Pick Sheet and Traveler printing and "Quick Print" option in Work Order Entry
- Work Order Dashboard displays more data and provides multiple drill-downs
- Close Work Order option when performing a completions
- Track "On Work Order" and "Required for Work Order" quantities separately
- Labor Status handling assigns status changes as labor transactions are processed through the routing steps
- Provides for Work Order number in Inventory Transaction History instead of the transaction journal number
- Option for "Components not available" warning when entering work orders
- Routing Revisions with Bill of Materials Maintenance integration for Effective Date Handling
- Auto-Generate Material Issue and Labor transactions
- Auto-Finish uses a standard set of options to complete the Operation and Scheduling Tabs

MAKE-TO-ORDER

System knows which Sales Orders to build Work Orders from and does not duplicate
Automatically create sub-assemblies with sub-assembly replenishment handling option
New button in S/O Entry allows for Work Order creation on-the-fly from S/O Entry lines
Summarize like items when auto-generating Work Orders from Sales Orders with finished good replenishment handling option
Work Order number is linked back to Sales Order for easier tracking
Forward or Backward Scheduling assignment default and UDF handling in Item Maintenance
Lead Time by Vendor or Item and Add or Override assignment defaults. Item UDF handling in Item Maintenance
Build Availability Inquiry Displays FG and Indented BoM Components with Quantity on Hand, Quantity Available, Quantity Required and Quantity Short. Will also display On PO detail and On WO detail with delivery dates and quantities.

OUTSIDE PROCESSING

- Maintain Vendors and their Line Detail for Outside Processing type Work Centers
- Auto-generate Outside Processing PO's from the Operations tab with display of PO and Receipt Detail.
- Color coordinate Outside Processing Operation Lines for status indication. Green - not started, Blue - in progress, Red - received complete.
- PO and Receipt detail handling added into WO Traveler.

AUTO-GENERATE PURCHASE ORDERS FROM WORK ORDERS

- New selection screen allowing for Work Order, Parent Item, WO Due Date, Planner Code and Buy Code to select Component Inventory.
- Links WO Number to PO line to eliminate duplication.
- Allows for "Summarizing Like Items" and editing of planned Component Items PO generation detail such as Vendor, Qty, Unit Cost and Extension.
- Costing Hierarchy option also provided.

AUTO-GENERATE PURCHASE ORDERS FROM INVENTORY

- New selection screen allowing for Item, Product Line, Buyer Code, Planner Code and others along with demand sources of Sales Order Number, Sales Order Promise Date, Work Order Number, WO Due Date and MRP Projections to select Component Inventory.
- Accounts for quantity availability calculations and Replenishment detail.
- Allows for editing of planned Component Items
- PO generation detail such as Vendor, Qty, Unit Cost and Extension.
- Costing Hierarchy option also provided.

SCHEDULING

- Work Center Dashboard allows for daily Work Center schedule handling.
- Provides detail of Work Orders and their respective time requirement.
- Daily Capacity of Work Center.
- Allows for moving Work Orders and rescheduling of future operation steps.
- Provides the user the ability to modify the Schedule Start Date in Work Order Entry and automatically reschedules future steps appropriately.

About Scanco

Since 1989, Scanco has been a leading provider of supply chain automation software and services. Since our inception, we have focused on innovative warehouse management solutions with a unique technology-driven approach. Our solutions deliver unequalled efficiency and visibility for distribution and manufacturing companies around the globe.

From basic barcoding to the most complex distribution and manufacturing operations- Scanco software is positioned to grow with our customers ever-changing business needs. We are focused on providing top-tier, fully integrated automation solutions built specifically for your ERP solution. Today, thousands of world-class distribution and manufacturing companies have automated their facilities with cutting-edge Scanco technology.

To learn more about our Sage solutions or to schedule a live product demonstration contact us at sales@scanco.com



OEM
Partner

www.scanco.com | sales@scanco.com | 330.645.9959

