

Distributore per l'Italia

Sic-UP s.r.l.
Sede legale
P.zza Pietro Ferrero 2, 12051 – Alba (CN)
Sede operativa
Via Naranzana 3/b, 12050 – Trezzo Tinella (CN)
Tel.: 0173. 630261
P.Iva: 03453260048
www.sic-up.it / info@sic-up.it

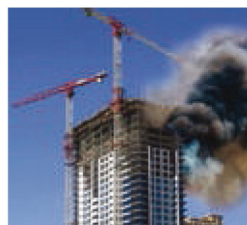


WHO WOULD BENEFIT FROM THE EVACUATOR



EXISTING HIGH-RISE BUILDINGS

- Owners
- Tenants
- Owners-occupiers' associations
- Housing corporations
- Hotels



HIGH-RISE BUILDINGS UNDER CONSTRUCTION

- Developers, builders
- Architects
- Draughtspersons
- Contractors



OTHER STRUCTURES

- Wind turbine manufacturers
- Offshore companies
- Cruise ships
- Tower cranes
- Control towers

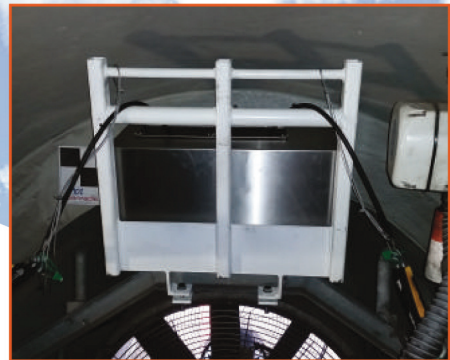


MANUFACTURED IN THE NETHERLANDS



FIREPROOF EVACUATION WITHIN 10 SECONDS!!!

EASY TO USE, COMPACT,
REVOLUTIONARY,
AFFORDABLE



Escape hooks pre-installed



THE EVACUATOR

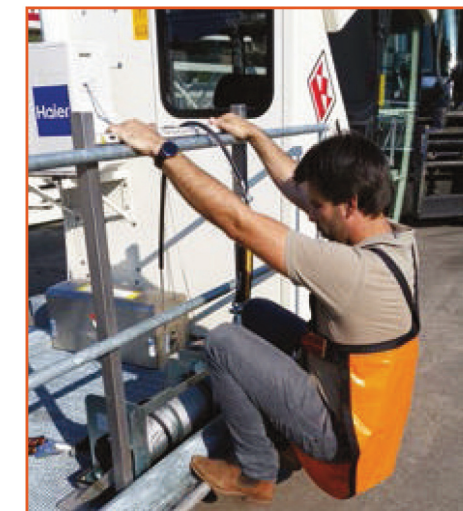
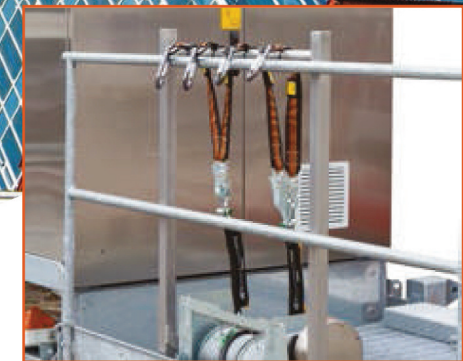
The Evacuator is the fastest and most userfriendly, fully automatic controlled descent system in the world. The perfect escape solution for people in panic situations on high structures: Just click and go....!!

THE BENEFITS

- Immediately ready to use in case of an emergency
- User friendly, less skills required
- The descent is fully controlled at a speed of approximately 1m/s
- Each reel of the Evacuator enables multiple persons to descend to safety
- Maximum load per reel is 254 kg
- Currently engineered for structures of up to 300 meters in height
- No electricity required, works at all times
- Installation inside or outside / weatherproof
- Very maintenance friendly, easy to install and compact
- Long service life, cost efficient
- Pricing competitive with traditional rope based descenders
- Pre-installed at the escape areas
- High quality and useful for many industrial applications
- Gives compliance with EN 50308 § 4.2.2. Wind turbines- protective measures "The descent system has to be fireproof enough to allow escape from the nacelle to the ground in the event of fire, it shall be suitable for the number of persons to be evacuated"



- Optional fire heat protector for extremely long heat protection



AVAILABLE IN 3 MODELS



E50

6 - 50 meters
4 x 254 kg



E140

6 - 140 meters
2 x 254 kg



E300

6 - 300 m
1 x 254 kg