


**Danbocchi Wide
Instruction
Manual**


だんぼっち[®]
DANBOCCHI[®]


1. Handling precautions


Please read the safety warnings carefully


To enjoy the product to its fullest, please pay attention to the following warnings.

	Danger In case of accident scenarios such as a fire breaking out.
---	--

	Warning In case of potential hazards.
---	--

	Caution In case of potential damages.
---	--

	Danger
Never use fire and highly volatile oils in the product room and in places in close proximity.	

	Warning
The product has a ventilation on the top, please avoid placing any objects that might block this as the product is air tight. Keep opening the door at regular intervals.	

	Caution
<p>※It is highly recommended that you assemble Danbocchi wide with two or more people, to avoid any injuries.</p> <p>Do not place the product in a high humidity area.</p> <p>Do not carry any liquids inside or place them near Danbocchi as spilling of the liquid will damage the cardboard and thus hinders the soundproofing quality.</p> <p>Use a sturdy and stable chair while inside the product.</p>	

2. Introduction

It is a simple soundproof room which can be easily assembled or dismantled, with its main material being corrugated cardboard.

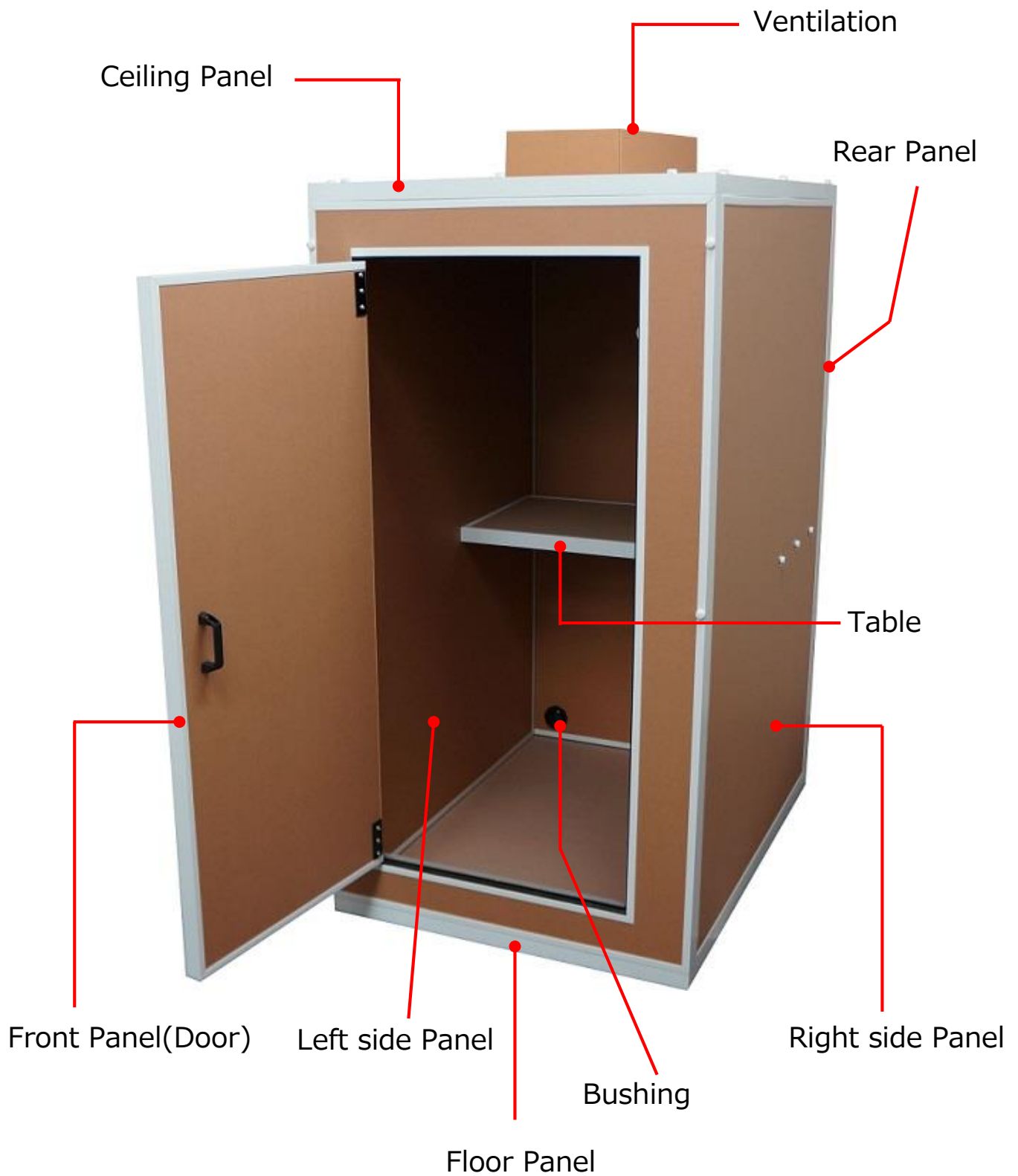
It is not a complete soundproofing device, but it is designed to greatly reduce any sound leaks and optimal for undisturbed singing practice.

Danbocchi can also be used as a private space, to focus on reading and studying.

Danbocchi wide :W110×D110×H164(cm)*including the ventilation openings
Total weight on assembly : 30.16kg



3. Nomenclature



※This is a representation of normal Danbocchi.

4. Parts

4. Parts list

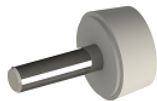
The main parts and accessories you will be receiving at the time of shipment are listed below

Before assembling, please make sure that no part is missing.

We have made every effort to make sure you receive everything in pristine condition, but if there are any missing items, or damaged items, please contact VIBE Customer Support immediately.



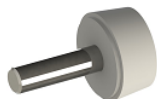
- Bushing – 3 pieces
- ✘ Two pieces for the ceiling panel, one for the rear panel.



- Screws(M6x21)White – 6 pieces
- ✘ For mounting the table.

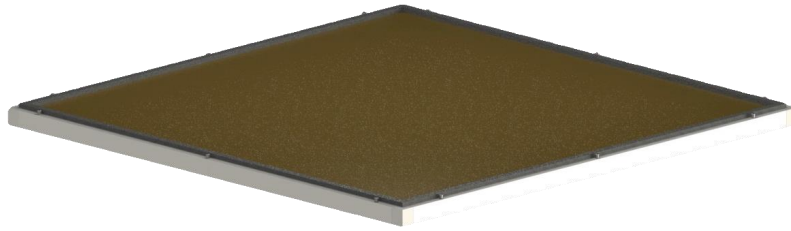


- Washers(Φ30M6) - 6 pieces
- ✘ For mounting the table.



- Screws(M5x22)White – 25 pieces
(Spare 1)
- ✘ Front, sides, rear, and ceiling panel assembly.

4. Parts



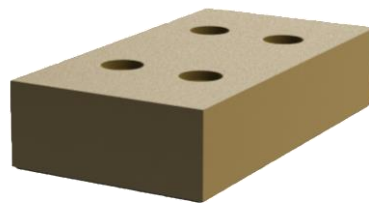
▪ Floor Panel

※Place this on the floor with the sponge facing upwards.



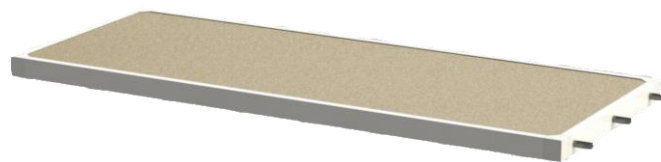
▪ Ceiling Panel

※Place this with the sponge facing downwards.



▪ Ventilation opening

※Place this with the rubber attachment facing downwards.



▪ Table

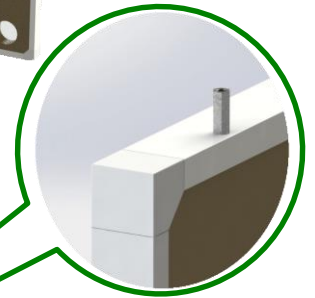
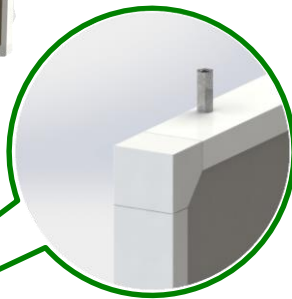
4. Parts



▪ Front Panel



▪ Rear Panel



▪ Left side Panel



▪ Right side Panel

The three holes in the middle of both right and left panels (as shown in the diagram) should align in a straight line for mounting the table.

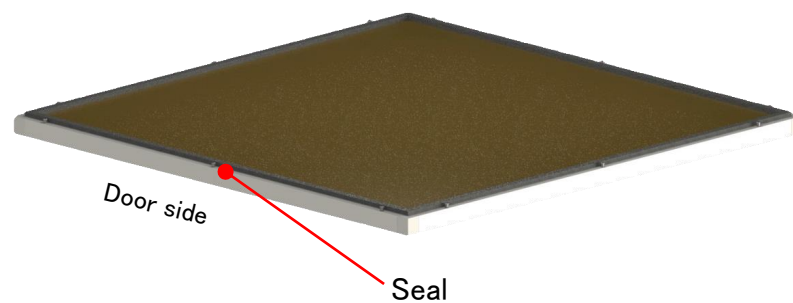
5. Getting started

Step1

Check for any missing parts.

Step2

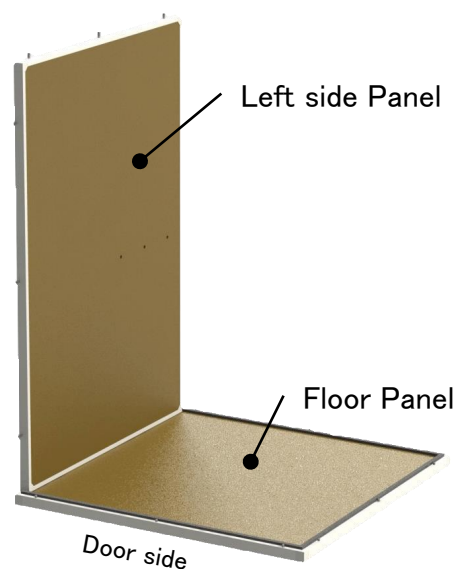
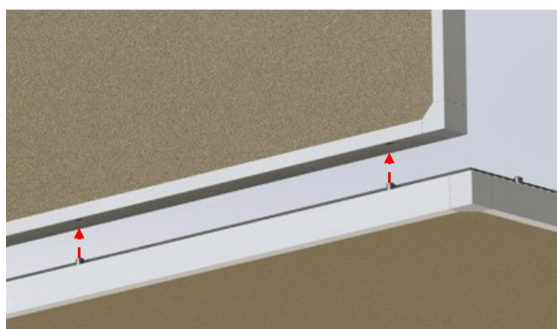
Place the floor panel on the ground. The side to which the red seal is affixed is the front.



Step3

Fix the left side panel on top of the floor panel.

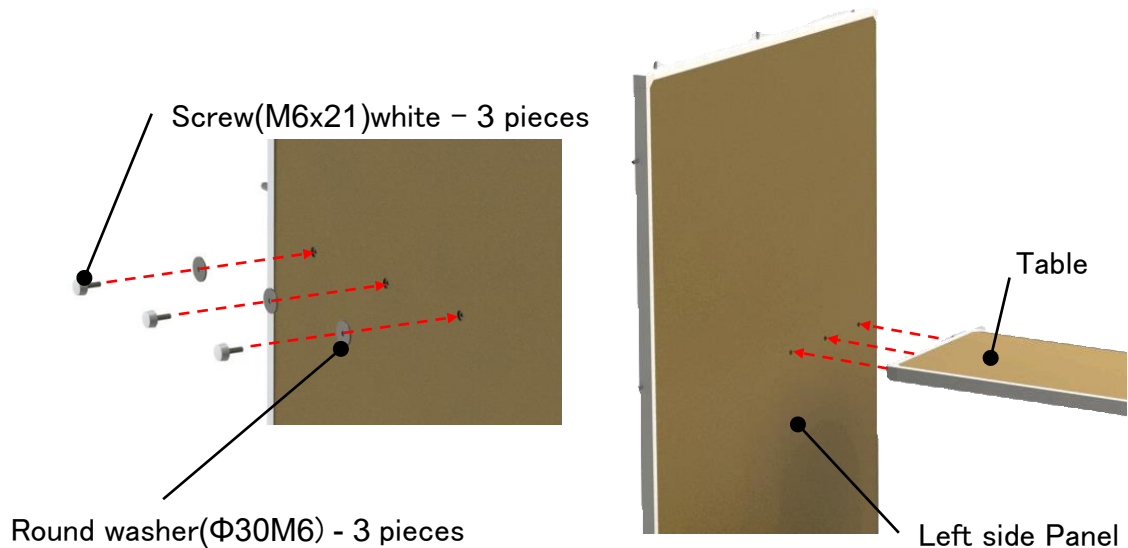
※Be sure to assemble it with the help of one or more people.



5. Getting started

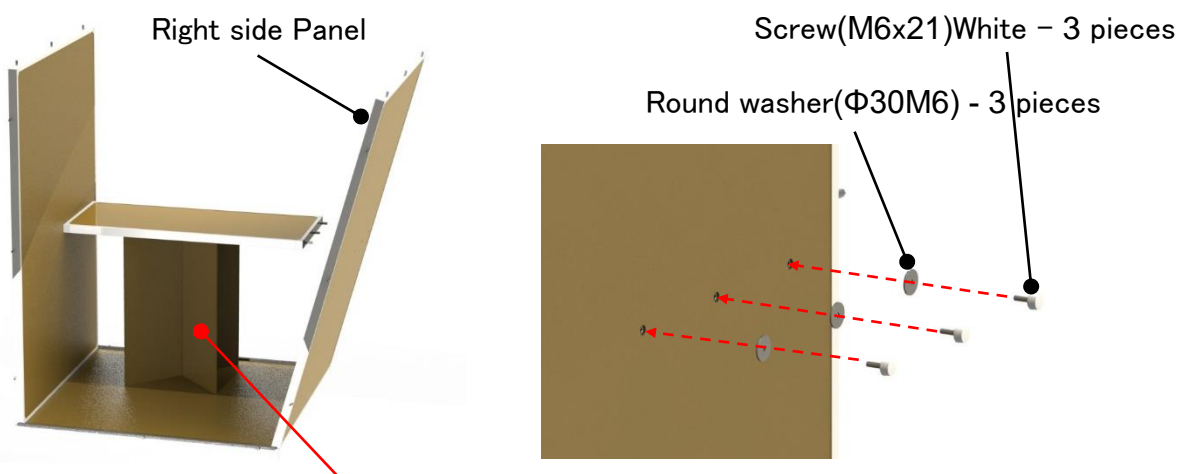
Step4

Attach the table to the left side panel. Firmly tighten the round washer and the screw.



Step5

Repeat the process (step2-4) for the right side panel.

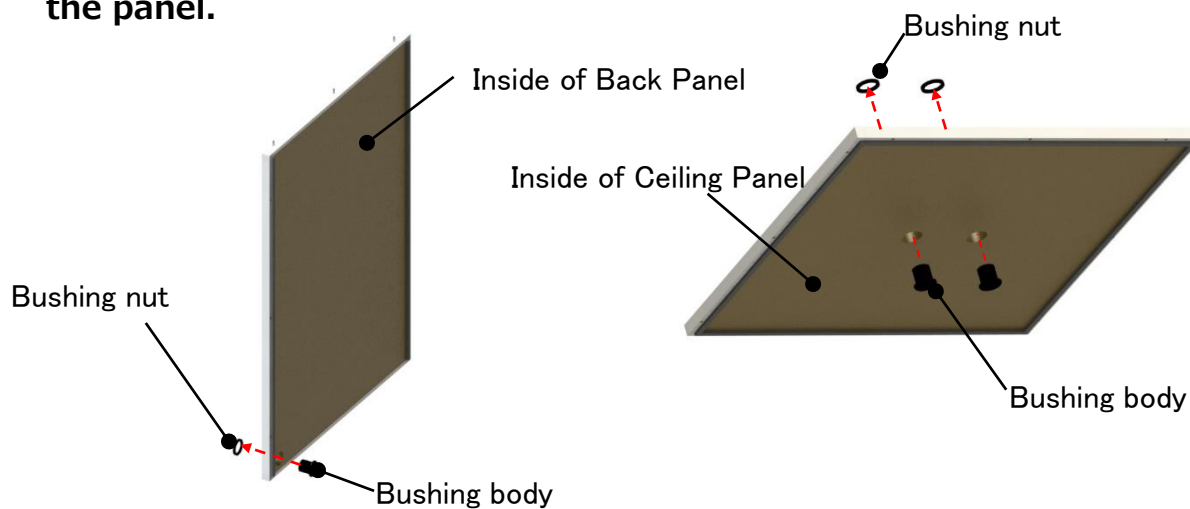


In this case, it is convenient to use two cardboard boxes with slits included as cushioning materials and use them as a workbench.

5. Getting stated

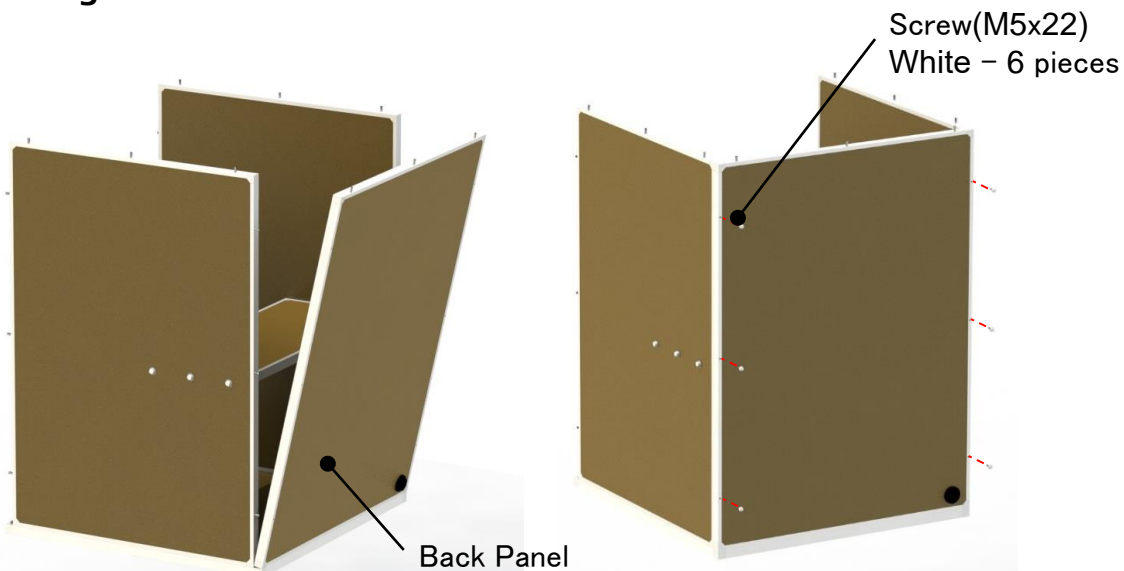
Step6

Attach the bushings to the back panel and the ceiling panel. Remove the nut attached to the bushing by rotating the nut in counterclockwise direction. Insert the body of bushing from inside of the panel and turn the nut clockwise to secure it from outside of the panel.



Step7

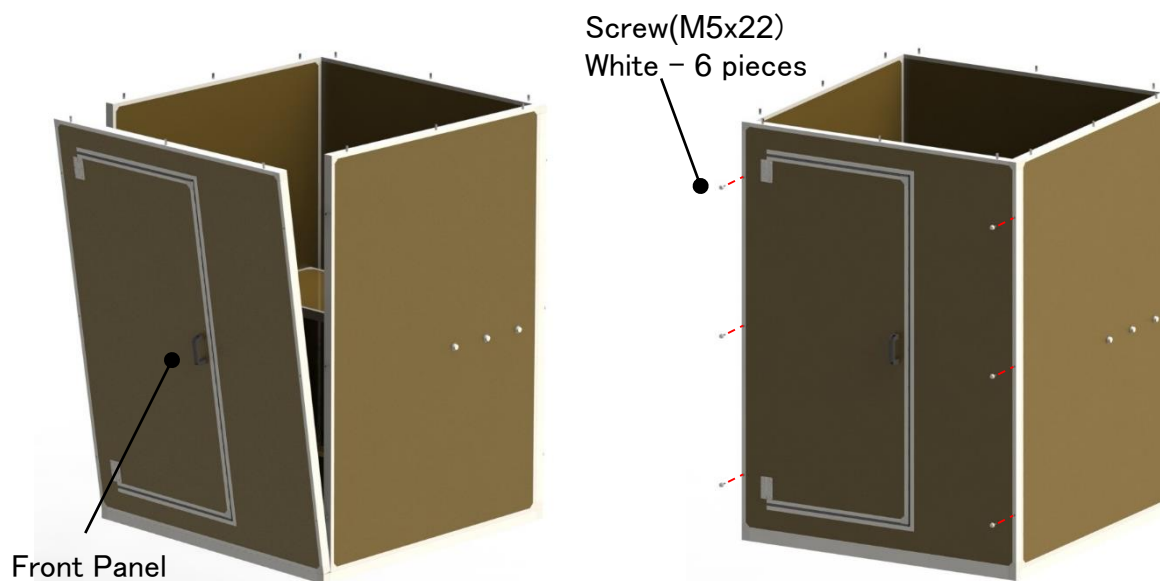
Slowly insert the back panel over the pins of the floor and the side panels and secure the pins coming out of the back panel by tightly fixing the screws to secure it.



5. Getting started

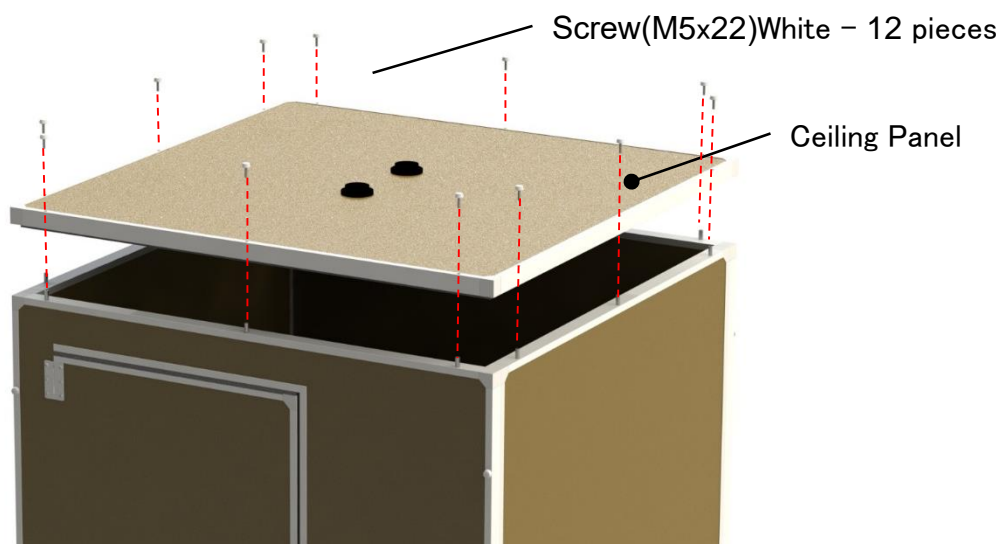
Step8

Repeat step 7 for the front/door panel.



Step9

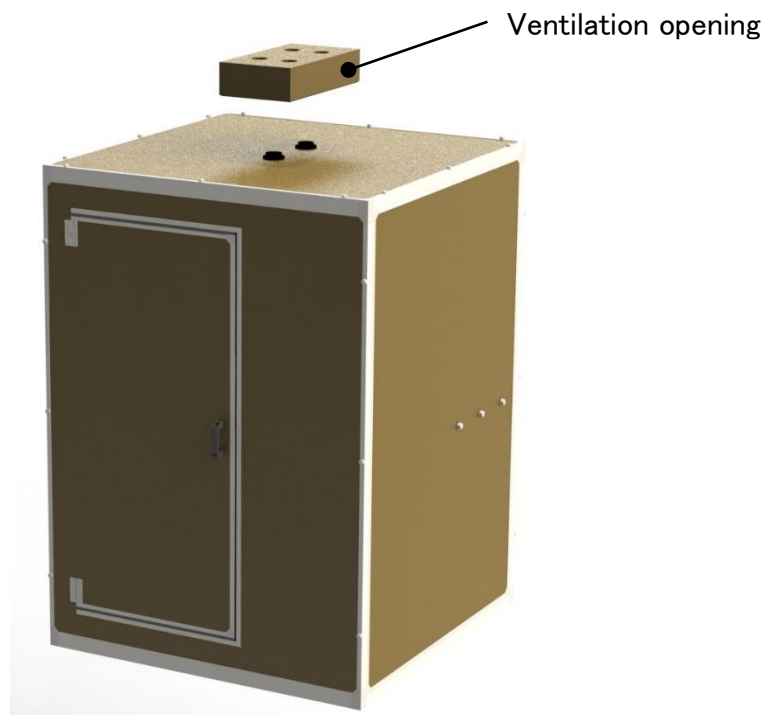
Lower the ceiling panel onto the set up so far so that the pins on the side, front and back panels fit perfectly into its holes. Once they are in place, tighten them with screws 12 pieces.



5. Getting started

Step10

Finally place the ventilation box on top of the ventilation holes.



6. Storage

Methods

Due to the nature of the material, we suggest you to avoid direct sunlight and extreme humidity. Please do not apply excessive force on any panel during storage. We encourage you to assemble it in a place where it least or completely does not disturb your daily routine.

7. Warranty details

Inspection

There is no need for inspection. However, if any damage occurs, please contact the customer consultation window.

In order to enhance the airtightness, the rubber packing of the door part is subject to pressure easily.

If the rubber packing peels off while using it, a strong adhesive should hold it.

Provision for free repair

We will accept returns/exchanges only if the delivered item is different from the initial order.

Please inform us by email within 7 days of receiving the product

<Disclaimer>

In the following cases we will not accept exchange of goods and returns, so please be forewarned.

- Exchange at customer convenience
- Items over 8 days passed since arrival
- Products once used (excluding initial defective products)
- Problems caused by actions that fall under the matters stated in "Handling precautions"

8. Contact

User support

VIBE customer center

mail: support_danbocchi@vibe.co.jp

TEL:+81-3-5464-3020

[Working hours]Weekdays 10:00 ~ 18:00

※When you make inquiries by telephone, please inform us your inquiry contents, name, and contact information. We will contact you shortly.

Distributor

VIBE Inc.

ICM Chuo Bldg.6F, 2-16-3, Hatchobori, Chuo-ku, Tokyo,
104-0032, Japan

<http://www.vibe.co.jp/en/>

Manufacturer

KANDA PACKAGE Co.,Ltd.

22, Tatetorimachi, Sukagawa-shi, Fukushima, 962-0021, Japan

Haneyrial Department

22-1, Yokoyamacho, Sukagawa-shi, Fukushima, 962-0041, Japan

TEL +81-248-94-2738 FAX +81-248-94-2728

<http://en.kanda-package.com/>