



**MMS**  
SHIP REPAIR • OFFSHORE • WORKBOATS

# Envirocat Harbour

Multi-purpose, pollution control  
and harbour cleaning workboat



## Designed, developed, and built at MMS Shipyard, UK.

The Envirocat Harbour can be easily operated by 2 crew, is road transportable and weighs only 5.5 tons. Oil pollution is removed from the water surface by the purpose-built skimming system which is transferred into the vessel's 3 ton holding tanks. The tanks are then simply emptied ashore with the Envirocat Harbour's own pumps and hose.

Floating debris can be collected by the vessels hydraulically operated scoop and is tipped into the on board holding skip. Waste can then be segregated and stored in the vessels recycling containers. Larger items can be lifted onto the vessel and ashore by the hydraulic crane.

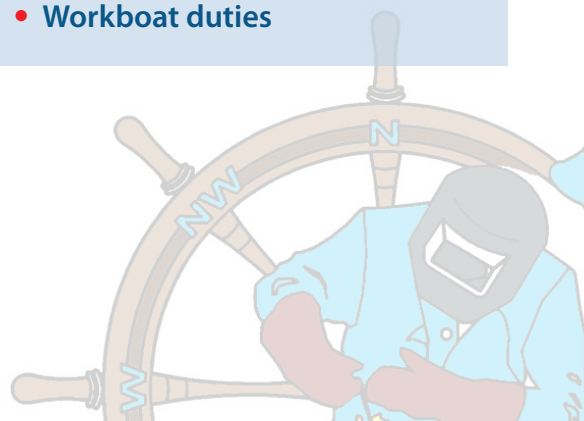
The catamaran is powered by twin 45hp engines making it highly manoeuvrable and being capable of carrying out general workboat duties such as safety stand-by or harbour maintenance.

**Why waste money investing in numerous vessels, towable containment booms and dispersants that are ineffective?  
You now have a simple and effective solution to clean up oil  
and debris pollution...**

**...the Envirocat Harbour.**

## Role Capability

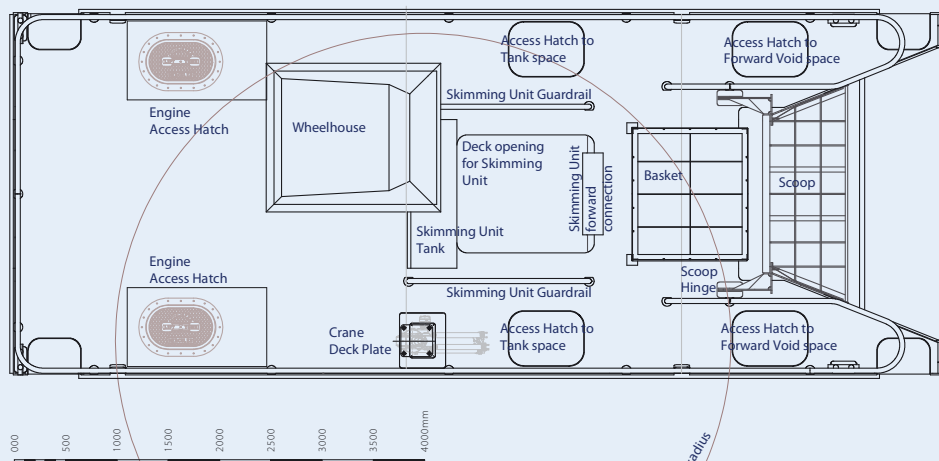
- Removal of surface oil pollution
- Collection of floating debris
- Safety stand-by
- General harbour repairs
- Workboat duties





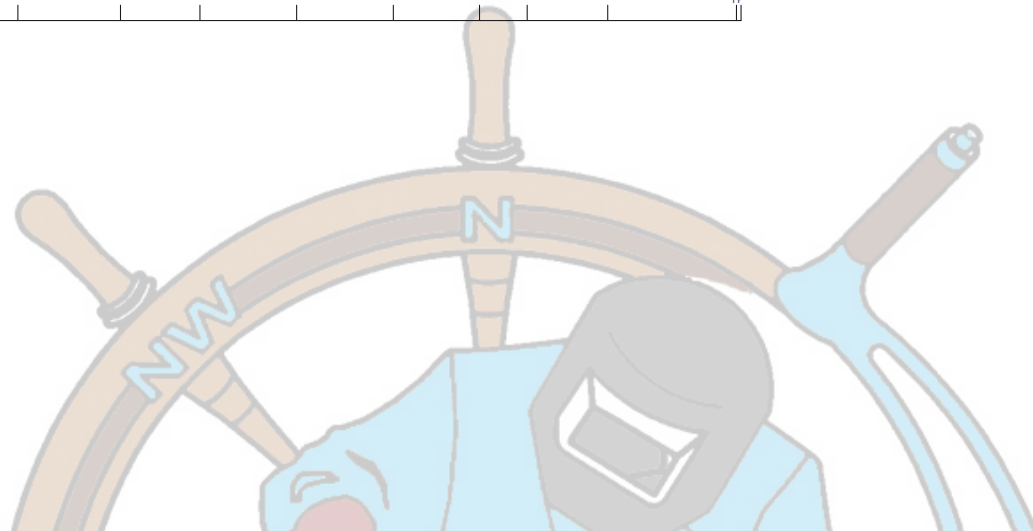
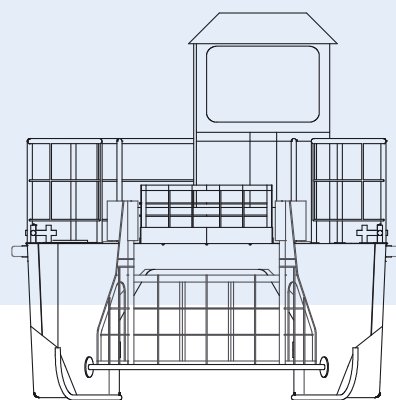
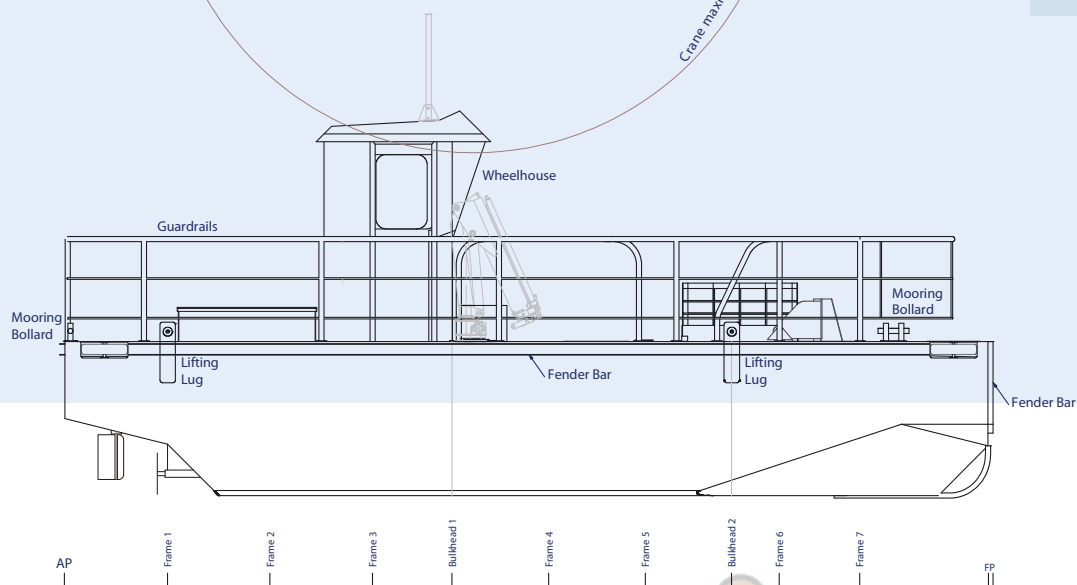
**MMS**  
SHIP REPAIR • OFFSHORE • WORKBOATS

# Envirocat Harbour



## Specification

- **Length:** 9.20m
- **Breadth inc. fender:** 3.80m
- **Draft unladen:** 0.60m approx.
- **Draft laden:** 1.10m approx.
- **Keel to mast height:** 2.80m
- **Weight (lightship):** 5.3 tons
- **Speed:** 9 knots
- **Fuel tank capacity:** 193 litres/  
43 gallon



Call: +44 (0)1482 219278

# Multi-purpose pollution control vessel ideal for use in harbours, naval bases, docks, rivers, canals and lakes.

The Envirocat Harbour is the **easiest, most efficient and cost-effective** way to keep your harbour waters clean.

## General

- Built in marine grade aluminium
- Hull sub-divided into watertight compartments
- Heavy duty all-round fenders
- Lifting eyes
- Deck wash

## Certification

- MCA (Mecal) Workboat Code 6
- Stability, builders certificate and operators manual provided on completion
- Material and machinery certification provided on completion

## Pollution Control Equipment

- Purpose-made skimming unit with easy change fibre belts
- 3 ton on-board oil recovery holding tanks with easily read level gauge
- Pump and hose for transferring waste oil ashore
- Hydraulic debris collection scoop
- Holding skip
- Recycling containers

## Mechanical

- Main engines x 2 Beta Marine 45hp
- Fixed pitch propellers x 2
- Automatic engine room bilge pumps x 2
- Deck wash combined fire hose pump

## Crane

- Hydraulic crane:  
Approximate capacity
- | Reach | Laden   | Unladen |
|-------|---------|---------|
| 3.1m  | 500kg   | 300kg   |
| 2.2m  | 750kg   | 500kg   |
| 1.3m  | 1,000kg | 700kg   |

## Electrical

- 24 volt lighting system
- Navigation (standard) lights
- Wheelhouse control console
- Steering angle indicator
- Shore supply connection

## Safety

- Engine room fire control suppression system
- Wheelhouse fire extinguisher
- Anchor with chain and cable
- Lifebelt and holder

## Paint System

- Application of anti-fouling to underwater area
- Name and port registry
- Waste oil cargo tanks coated in hard body approved system to prevent acidity corrosion





**MMS**  
SHIP REPAIR • OFFSHORE • WORKBOATS

# Envirocat Harbour

Multi-purpose, pollution control and harbour cleaning workboat



• **View the vessel in action: visit YouTube: enter 'Envirocat Harbour'**

All our vessels are simple and safe to operate, require minimum crew and are constructed to the highest standard.

We can give you a fixed price including delivery and on-site training anywhere worldwide.



Certificate Number 7700  
ISO 9001  
ISO 14001

**MMS Ship Repair & Dry Dock Co. Ltd.**

Alexandra Dock, Hull, HU9 1TA, United Kingdom

Telephone +44 (0) 1482 219278

Facsimile +44 (0) 1482 588061

Email: [info@mms-shiprepair.co.uk](mailto:info@mms-shiprepair.co.uk)

All work undertaken is subject to Terms and Conditions, a copy of which is available on request.  
Registered in England: 2226135 VAT Registration: GB 500 8350 87

[www.mms-shiprepair.co.uk](http://www.mms-shiprepair.co.uk)