

1 | Childhood (Being Me)



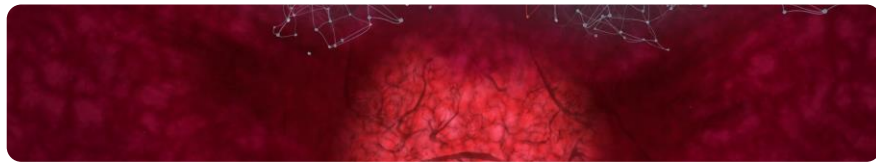
(1) Adoption (06:44) *Adopter recruitment and preparation*

- **Overview:** A 6-minute experience to be used in recruitment of adopters (no directly traumatic scenes).
- **Uses:** All stages of recruitment for carers, including assessment; preparation for placements; placement support; Prospective carers, adoption, fostering, family and friends; Training for professionals in social care, education, youth services and health.
- **Link for online viewing:** <https://vimeo.com/447194860/21e119e828>



(2) Fostering (06:44) *Foster carer recruitment and preparation*

- **Overview:** A 6-minute experience to be used in recruitment of foster carers (no directly traumatic scenes).
- **Uses:** All stages of recruitment for carers, including assessment; preparation for placements; placement support; Prospective carers, adoption, fostering, family and friends; Training for professionals in social care, education, youth services and health.
- **Link for online viewing:** <https://vimeo.com/447195808/096f5a48e5>



(3) In utero (02:14) *Drugs, alcohol and domestic abuse: the unborn child's view*

- **Overview:** A 2-minute 'in-situ' experience showing in utero exposure to drugs, alcohol and domestic abuse.
- **Uses:** All stages of recruitment for carers; preparation for placements; placement support; parenting assessments; early years training; Early years support with parents. Training for professionals in social care, education, police, youth services and health.
- **Link for online viewing:** <https://vimeo.com/447196856/9ee97e3d9b>



(4) Carnaby Street (04:22) *Trauma, abuse and neglect in the early years*

- **Overview:** A 4-minute direct view of trauma, neglect and shame from an infant's perspective placing you 'in-situ' as the child.
- **Uses:** Preparation for placement; placement support; parenting assessments; survivors and perpetrators of domestic violence; Training for professionals in social care, education, police, youth services and health.
- **Link for online viewing:** <https://vimeo.com/447197198/ab0373c75b>



(5) School triggers (00:47) *School triggers: children with early life trauma at school*

- **Overview:** An observation of children's triggers at school and how different responses from teachers impact the child.
- **Uses:** To support education placements and understanding of children's difficulties in a school setting; Training for professionals in social care, education, youth services and health.
- **Link for online viewing:** <https://vimeo.com/447197909/183e52545f>



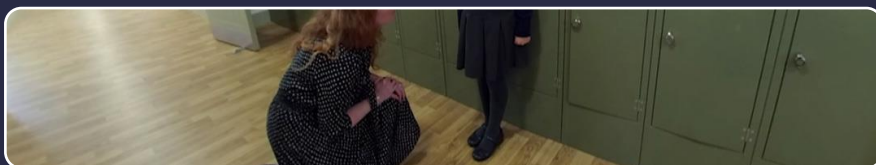
(6) Style A – school (00:59) *Children with early life trauma at school (style A)*

- **Overview:** An observation of children's triggers at school and how different responses from teachers impact the child.
- **Uses:** To support education placements and understanding of children's difficulties in a school setting; Training for professionals in social care, education, youth services and health.
- **Link for online viewing:** <https://vimeo.com/447198046/785a5b9907>



(7) Style B – school (01:18) *Children with early life trauma at school (style B)*

- **Overview:** An observation of children's triggers at school and how different responses from teachers impact the child.
- **Uses:** To support education placements and understanding of children's difficulties in a school setting; Training for professionals in social care, education, youth services and health.
- **Link for online viewing:** <https://vimeo.com/447198215/e014622834>



(8) Therapeutic approach - at school (01:41) *Children with early life trauma at school (therapeutic approach)*

- **Overview:** An observation of children's triggers at school and how different responses from teachers impact the child.
- **Uses:** To support education placements and understanding of children's difficulties in a school setting; Training for professionals in social care, education, youth services and health.
- **Link for online viewing:** <https://vimeo.com/447198416/3fa2550301>



(9) Style A – home (01:03) *Children with early life trauma at home (style A)*

- **Overview:** An observation of children's triggers at home and how different responses from care givers impact the child.
- **Uses:** Preparation for placement; placement support; parenting assessments; survivors and perpetrators of domestic violence; Training for professionals in social care, education, youth services and health.
- **Link for online viewing:** <https://vimeo.com/447198683/7bc10dd374>



(10) Style B – home (01:45) *Children with early life trauma at home (style B)*

- **Overview:** An observation of children's triggers at home and how different responses from care givers impact the child.
- **Uses:** Preparation for placement; placement support; parenting assessments; survivors and perpetrators of domestic violence; Training for professionals in social care, education, youth services and health.
- **Link for online viewing:** <https://vimeo.com/447198879/3c975b6e34>



(11) Therapeutic approach – at home (02:46) *Children with early life trauma at home (therapeutic approach)*

- **Overview:** An observation of children's triggers at home and how different responses from care givers impact the child.
- **Uses:** Preparation for placement; placement support; parenting assessments; survivors and perpetrators of domestic violence. Training for professionals in social care, education, youth services and health.
- **Link for online viewing:** <https://vimeo.com/447199228/ab44c2180d>