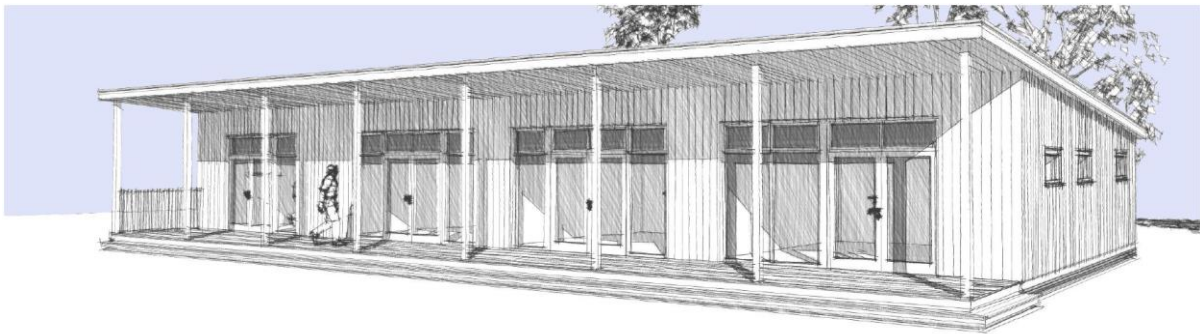


Briefing note

I would like to take this opportunity to update you on some exciting developments planned for ISP school. Following a full review, with quality of teaching environment and sustainable provision being our primary considerations, it has been concluded that a one school on one site will enable us to deliver the best outcomes for our children and young people.

Our intention is to develop one ISP School on our Teynham site, to open in September 2018, subject to planning. The proposed building would replace the existing barn, replacing it with 4, six-pupil classrooms and associated facilities:



- Above: Artist impression of the state-of-the-art teaching block at ISP Teynham School. The classroom space will be highly flexible, configurable and collaborative to support inclusion and boost engagement in learning



- Above: Modular constructions using similar eco-friendly materials and designs to that proposed for ISP Teynham School

The introduction of this modern learning environment, will provide flexible space equipped with the latest technologies to support a variety of pedagogical styles and class structures that can be adapted according to need.

Aside from the obvious benefits of a purpose built and modern facility, being on one site will also significantly reduce lost teaching hours and disruption resulting from transporting pupils between the Teynham and Sittingbourne sites.



The Sittingbourne site has been extensively reconfigured and extended over the last 25 years. Our plans to move to the Teynham site acknowledge Ofsted's concerns relating to the restrictions of the learning environment at the Sittingbourne site. All pupils currently attend the Teynham site during the week and the move to one site will negate the need for travel between the two sites which currently results in loss of learning time.

The additional facilities at Teynham, will be constructed using a high quality modular system which is both environmentally friendly and in keeping with the existing school buildings. With works planned for the summer months, disruption will be kept to a minimum. The logistics of pupil home to school transport will be addressed prior to the move to one school site.

We look forward to this new and exciting chapter for ISP School and the benefits that one site will bring to staff and pupil alike. We will keep you fully informed of developments but in the meantime, if you have any queries or concerns in relation to this, please do not hesitate to contact me directly.