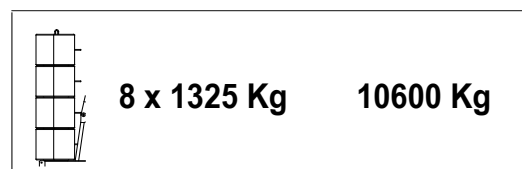
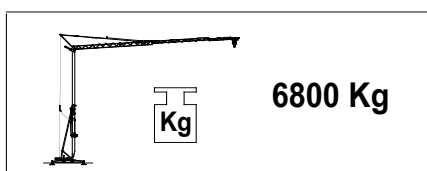
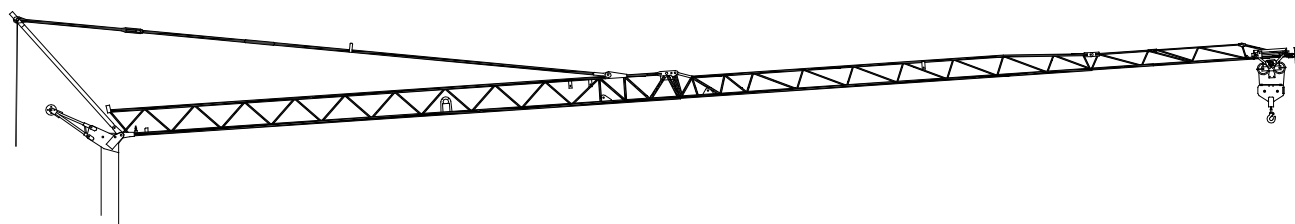
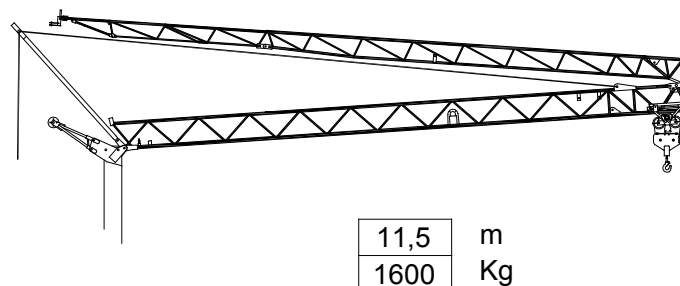
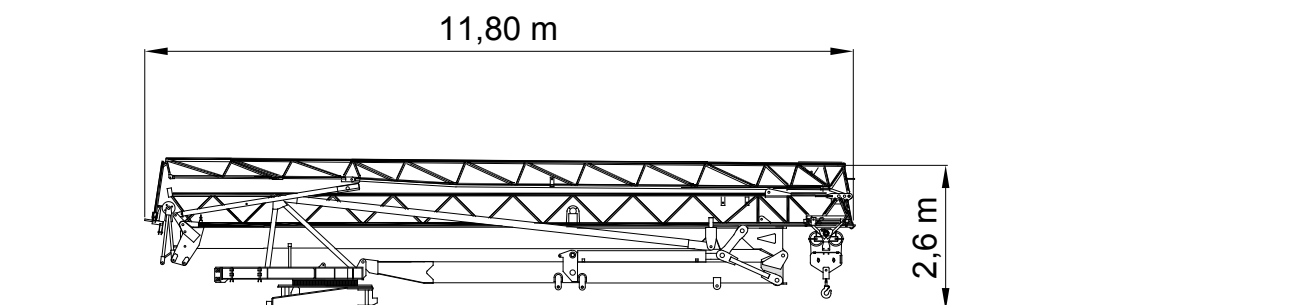
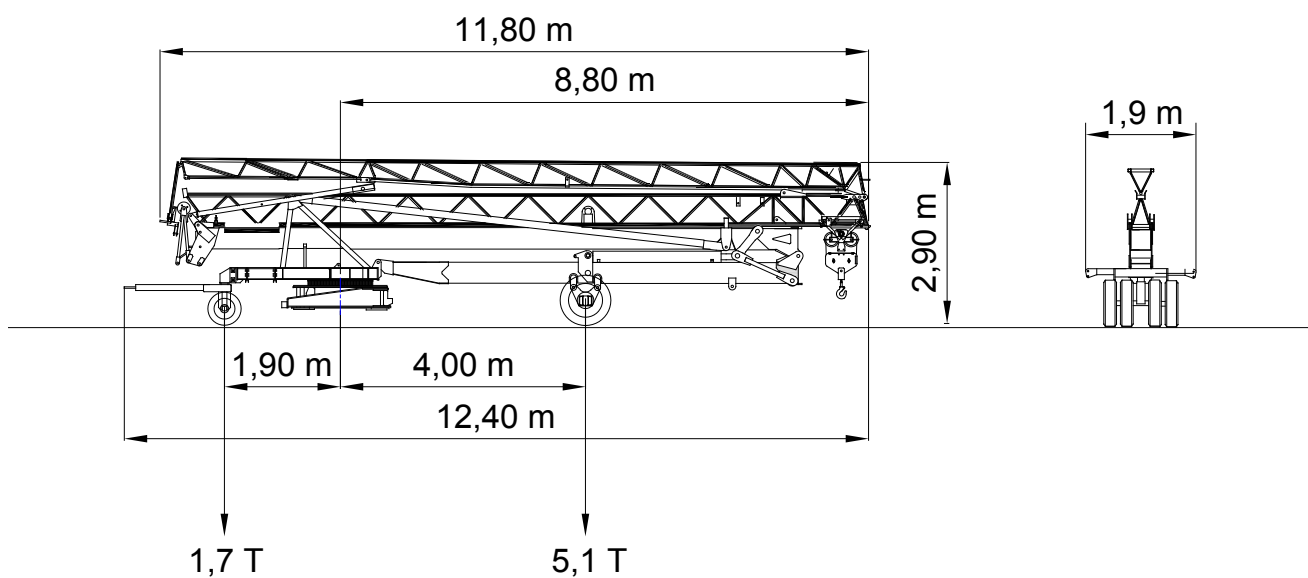


Trifásica
Three-phase
Dreiphasig
Triphasée
Trifase



DIN 15018





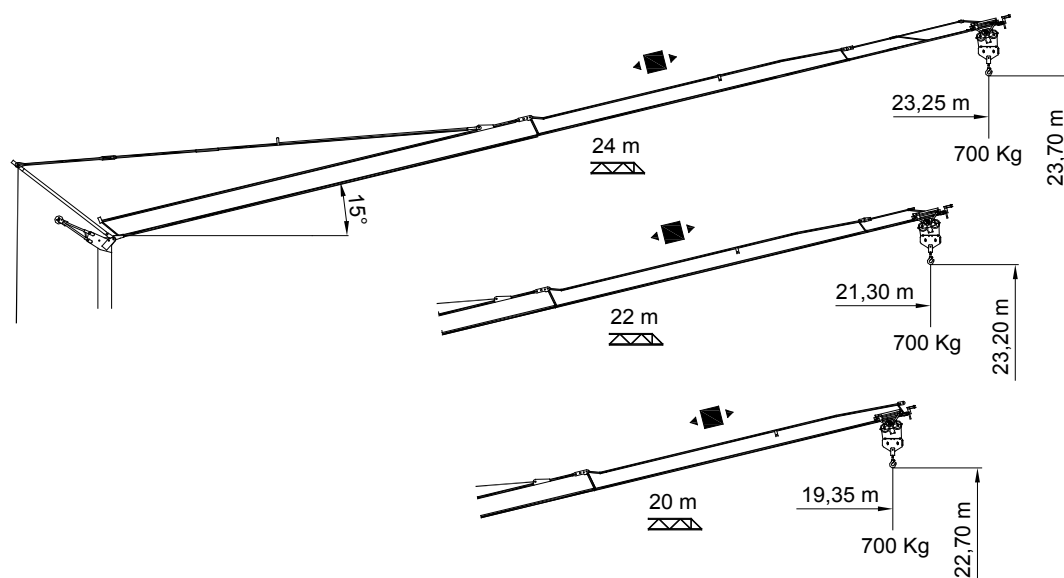
STANDARD

Curvas de cargas
Load diagrams
Lastkurven
Courbes de charges
Curve di carico

11.7	14	16	18	20	22	24	m
1600	1305	1120	975	865	775	700	Kg

12.6	14	16	18	20	22	m
1600	1425	1225	1070	950	850	Kg

13.2	14	16	18	20	m
1600	1500	1290	1130	1000	Kg





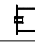



24 m 0 ► 23,25 m
700 Kg





22 m 0 ► 21,30 m
700 Kg


20 m 0 ► 19,35 m
700 Kg

Mecanismos Mechanisms Antriebe Mécanismes Meccanismi

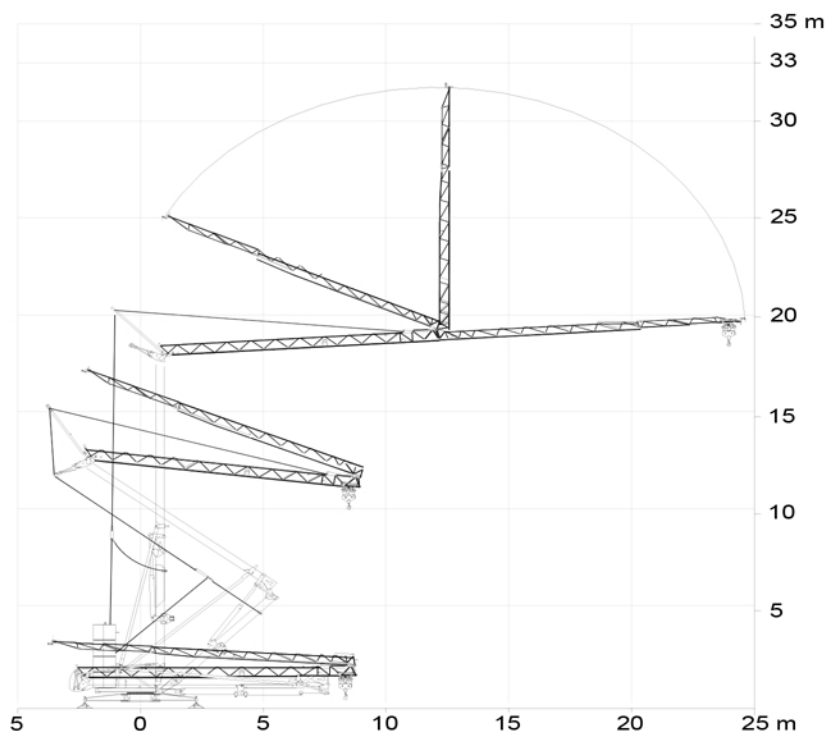
7.5Hp (5.5Kw)
H.B.G. 18 S/R Ø10mm

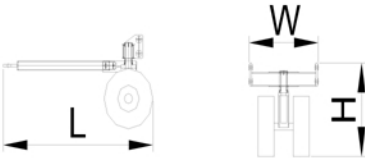
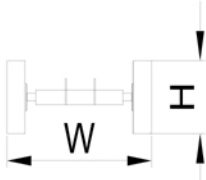
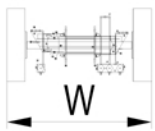
					
 INVERTER		m/min	6	18	36
	105m	Kg	1600	1600	800
		Kw	1,3	5,5	5,5
 INVERTER		m/min	37		
		Kw	1,1		
 INVERTER		r.p.m	0,25	0,5	0,8
		N.m	25		
		Kw	2,2		

-  Elevación / Hoisting / Heben / Levage / Sollevamento
-  Distribución / Trolleying / Kartzfahren / Distribution / Distributions
-  Orientación / Slewing / Schwenken / Orientation / Rotazione
-  Montaje / Erection / Montage / Montage / Montaggio

 CEI 38 IEC 38	400 V 50 Hz	380 V 60 Hz	40 kVA	4x10mm ²
---	----------------	----------------	--------	---------------------

Montaje
Erection
Montage
Montage
Montaggio



		L (m)	W (m)	H (m)	Kg
Eje de transporte delantero Road transport axle front / Transportachse vorne Essieux de transport avant / Asse di trasporto anteriore		1,96	0,96	1,00	312
Eje de transporte trasero / Road transport axle behind / Transportachse hinten / Essieux de transport arrière / Asse di trasporto posteriore		0,89	2,40	0,89	346
Eje de transporte trasero con freno Transportachse hinten mit brense Essieux de transport arrière avec frein Asse di trasporto posteriore con freno		1,25	2,40	1,35	690