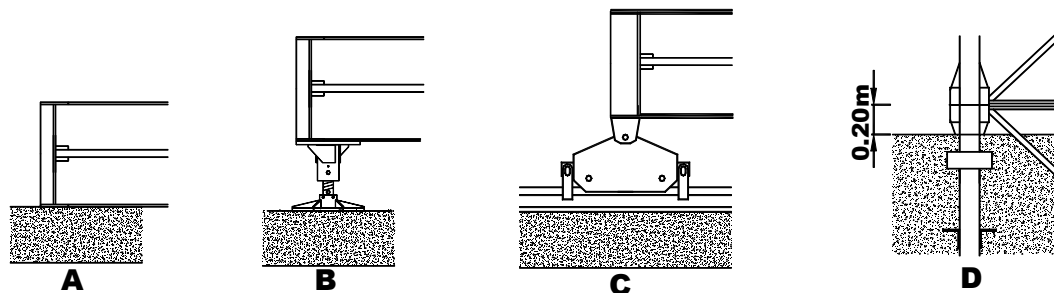


SAEZ



UNE 58-101-92 // FEM 1001-87
 Conforme con la direttiva 98/37/CE
According to EC 98/37 instruction
 Conforme alla direttiva 98/37/CE

CARGA MAX. MAX. S.W.L CARICO MASSIMO		2500 kg					4000 kg				
Pluma Jib Braccio		(m)									
Campo de carga max de 2,1m. a Max swl range from 2,1m. to Campo di carico Massimo da 2,1m. a											
Alcance Radius Sbraccio (m)											
	12	2500	2500	2500	2500	2500	4000	4000	4000	4000	4000
	13.5	2500	2500	2500	2500	2500	4000	4000	4000	4000	3500
	15	2500	2500	2500	2500	2500	4000	4000	4000	3760	2970
	18	2500	2500	2500	2500	2500	3800	3240	3150	3060	2580
	21	2500	2500	2500	2500	2460	3180	2750	2760	2670	2270
	23.6	2500	2500	2500	2500	2110	2650	2550	2460	2370	2030
	27		2500	2370	2180	1840		2260	2170	2030	1750
	30.0		2100	2110	1930	1630		2000	1890	1800	1550
	33			1890	1730	1560			1690	1580	1360
	35.5			1700	1560	1420			1550	1450	1220
	39				1420	1300				1250	1050
	41.0				1300	1200				1150	980
	43					1100					920
	46.0					1000					850

MECANISMOS MECHANISMS / MECCANISMI		
	Vel. m/min Speed	Pot. W Power
	0.3 0.6 rpm 0.9	4.0 kw
	28 / 56 m/min	1 / 1.8 kw
	20 m/min	2x2.2 Kw

CARGA / VELOCIDAD (kg/m/min) LOAD / SPEED • CARICO / VELOCITA'		
Potencia / Power / Potenza	15 Hp (11 Kw) - 2.5 t	* 25 Hp (18.5 Kw) - 4.0 t
	1ª	2500 kg – 8 m/min
	2ª	2500 kg – 29 m/min
	3ª	1000 kg – 58 m/min
	1ª	4000 kg – 4 m/min
	2ª	4000 kg – 15 m/min
	3ª	2500 kg – 30 m/min

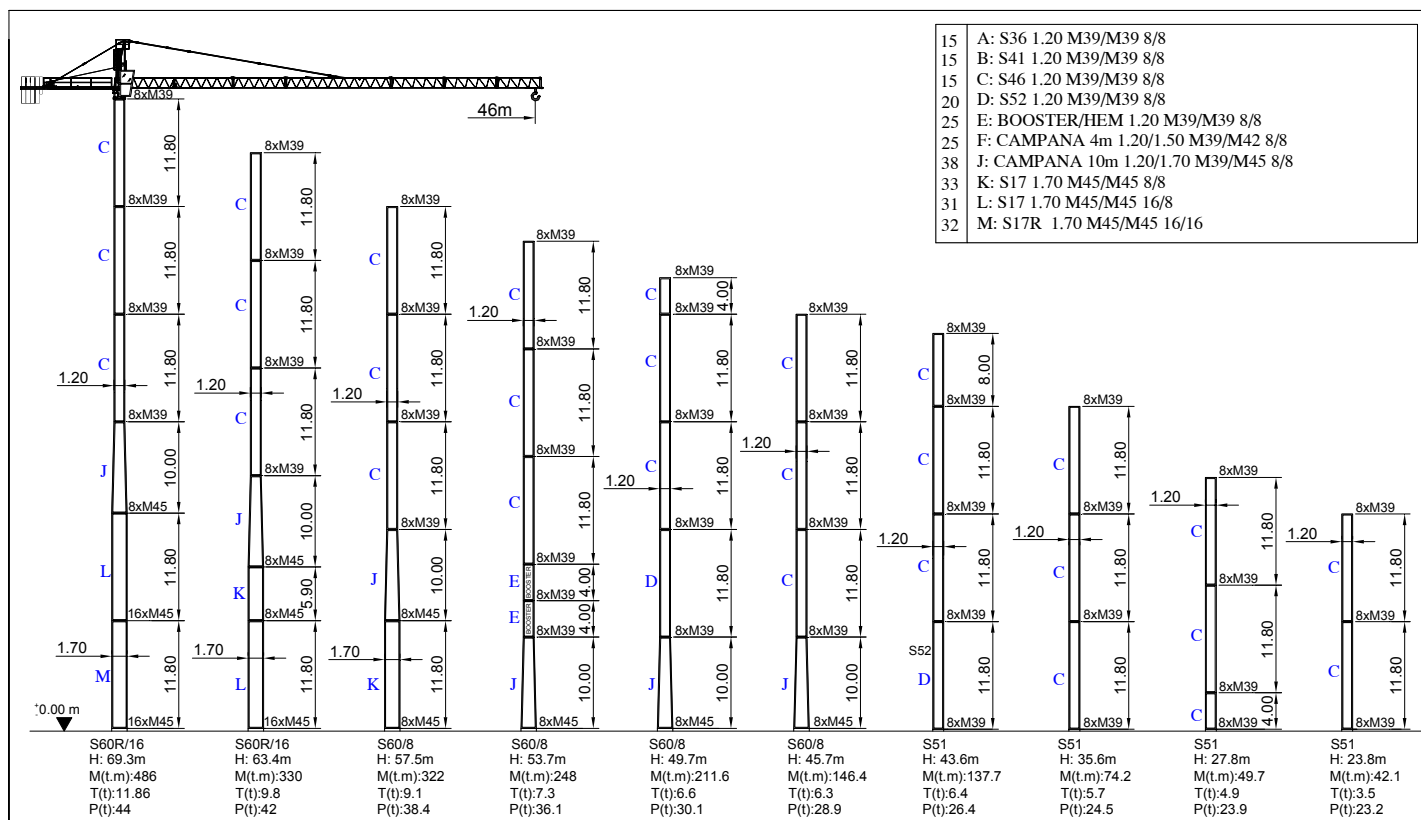
ALCANCE RADIUS / SBRACCIO	46 m			41 m			35.5 m			30 m			23.6 m		
CONTRAPESO COUNTERWEIGHT CONTRAPPESO	A	B	C	A	B	C	A	B	C	A	B	C	A	B	C
	4	-	1	3	1	-	3	-	1	3	-	-	2	-	1
	10050 kg			8300 kg			7750 kg			6900 kg			5450 kg		

LASTRE DE LA BASE / BASE BALLAST BLOCKS / ZAVORRA ALLA BASE						
	CON BASE ON CROSSBASE	24.9 m	28.9 m	36.7 m	40.7 m	50.9 m
	3.2x3.2m	45.6 t	53 t	53 t	-	-
	3.8x3.8m	45.6 t	53 t	53 t	60.8 t	-
	4.5x4.5m	45.6 t	53 t	53 t	60.8 t	72.8 t

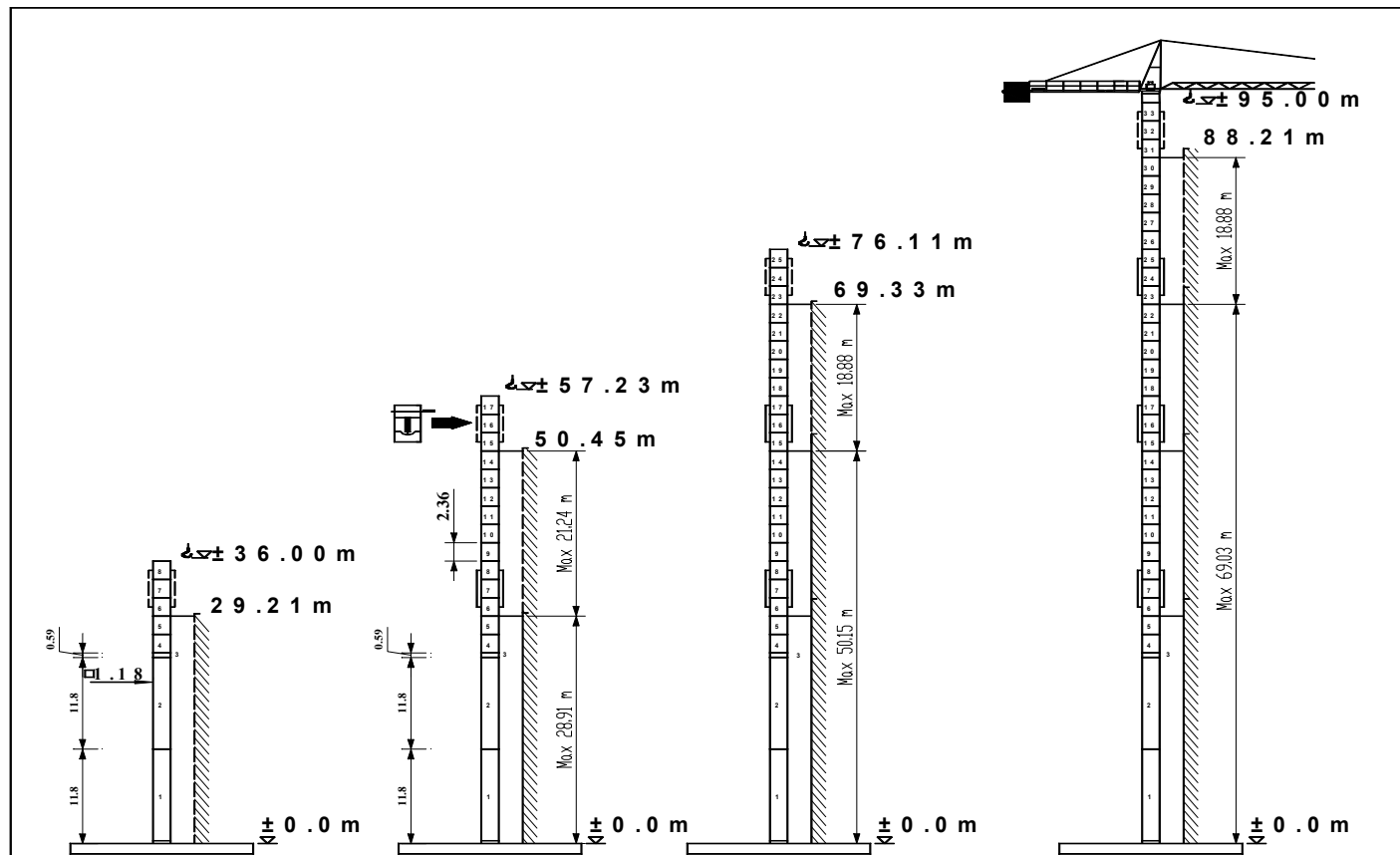
PESO DE CONSTRUCCIÓN APROXIMADO DEAD WEIGHT APPROX. / PESO DI COSTRUZIONE APPROSSIMATO	20 440 kg
---	-----------

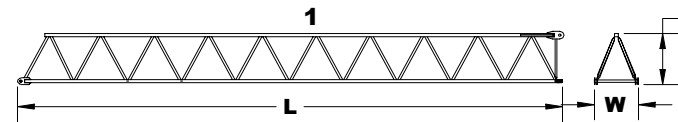
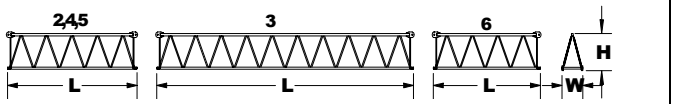
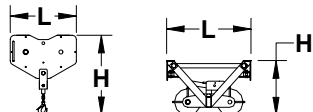
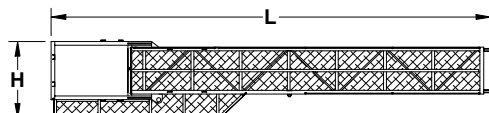
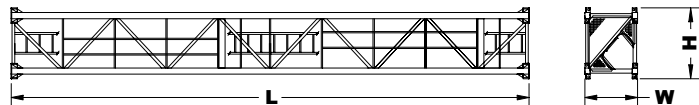
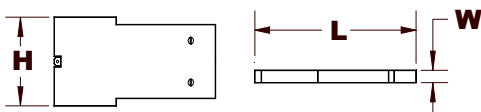
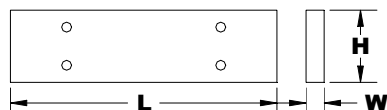
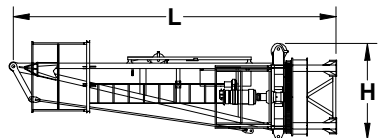
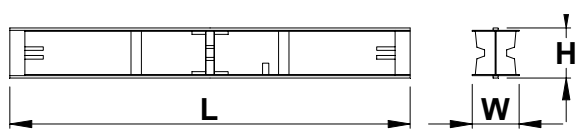
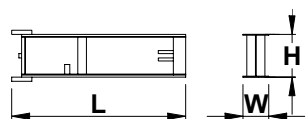
POTENCIA REQUERIDA Y CONDUCTORES REQUIERED POWER AND CONDUCTORS POTENZA ELETTRICA NECESSARIA E CONDUTTORI	CON ELEVACIÓN 18.5 Kw 18.5 Kw HOISTING CON SOLLEVAMENTO 18.5 Kw			CON ELEVACIÓN 11.5 Kw 11.5 Kw HOISTING CON SOLLEVAMENTO 11.5 Kw		
	31 KVA - 400 V - 50Hz			20 KVA - 400 V - 50 Hz		
	25 m	50 m	100 m	25 m	50 m	100 m
	4x25mm ²	4x25mm ²	4x25mm ²	4x16mm ²	4x16mm ²	4x25mm ²

COMPOSICIÓN DE TORRE / TOWER COMPOSITION / STRUTTURA DELLA TORRE



MONTAJE HIDRÁULICO / HYDRAULIC ASSEMBLY / MONTAGGIO IDRAULICO



PESO Y DIMENSIONES DE LOS ELEMENTOS DE LA GRÚA WEIGHT AND DIMENSIONS OF THE CRANE / PESO E DIMENSIONI DEI ELEMENTI DELLA GRU		L (m)	W (m)	H (m)	Peso (kg)	
ELEMENTO DE PLUMA Nº1 JIB HEEL SECTION ELEMENTO DI BRACCIO Nº1		11.85	1.04	1.30	1125	
ELEMENTO INTERMEDIO DE PLUMA INTERMEDIATE JIB SECTION ELEMENTO INTERMEZZO DI BRACCIO		2	5.94	0.95	1.22	450
		3	11.74	0.95	1.32	975
		4	5.94	0.95	1.22	330
		5	5.94	0.95	1.22	310
		6	5.14	0.95	1.22	240
		GANCHO Y CARRO HOOK AND TROLLEY GANCIO E CARRELLO		0.75	0.12	1.40
0.96	1.10			0.62	110	
CONTRAPLUMA COUNTER JIB CONTROBRACCIO		9.28	0.22	1.64	1050	
ELEMENTO DE TORRE TOWER SECTION ELEMENTO DI TORRE		11.8 4.0	1.2 1.2	1.38 1.38	3000 1100	
BLOQUE DE CONTRAPESO COUNTERWEIGHT BLOCKS BLOCCO DI CONTRAPPESO		A	2.94	0.30	1.25	2300
		B	2.94	0.18	1.25	1400
		C	1.70	0.18	1.25	850
BLOQUE DE LASTRE DE LA BASE BASE BALLAST BLOCK BLOCCO DI ZAVORRA ALLA BASE		4.4	1.2	0.3	3800	
CABEZA DE TORRE TOWER HEAD TESTA DI TORRE		6.5	1.8	1.7	2990	
VIGA PRINCIPAL DE LA BASE MAIN BASE BEAM TRAVE PRINCIPALE DELLA BASE		5.72	0.67	0.65	1560	
SEMIVIGA SECUNDARIA DE LA BASE HALF BASE BEAM SEMITRAVE SECONDARIA DELLA BASE		2.77	0.45	0.665	1500	