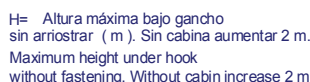







J41MAC

UNE-EN-ISO 9001 



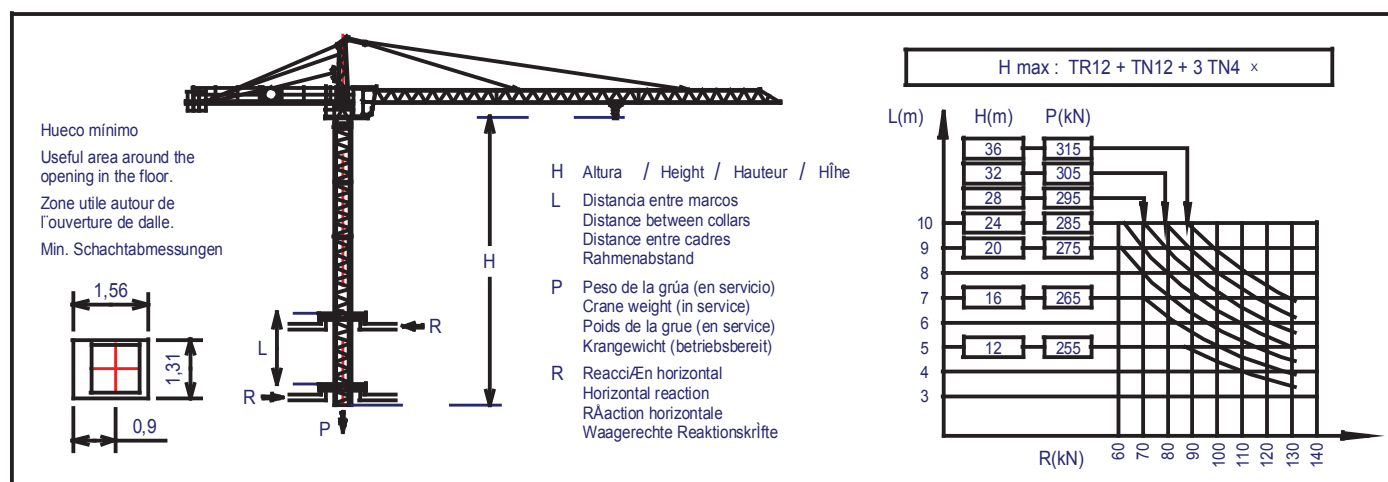
CARACTERÍSTICAS DE MECANISMOS MECHANISMS FEATURES					CARACTERÍSTICAS DE MECANISMOS KENNDATEN DER ANTRIEBE				
MECANISMOS MECHANISMS MECANISMES ANTRIEBE									
	EJ 1540		EJ 1856		TGJ 725 TGJ 725 M	TGJ 525 M	OJR 608	TCL 235	
kW	11		13,2		5,5	4	4	1,1	
VELOCIDADES SPEEDS VITESSES GESCHWINDIGKEITEN	1250 kg 2000 kg	40/20/5 m/min 20/5 m/min	1200 kg 2000 kg	56/28/6 m/min 28/6 m/min	25 m/min	25 m/min	0...0,8 r.p.m. sl./min tr./min	35 m/min	
Max. recorrido gancho Maximum hook course Course maximale du crochet Max. Hakenweg			EJ 1540 = 90 m EJ 1856 = 140 m		 380V - 50Hz		Potencia necesaria con... Required power with... Puissance nAcessaire avec... Erforderliche Leistung mit... EJ 1540 = 21,6 kW EJ 1856 = 23,8 kW		



JASO EQUIPOS DE OBRAS, S.A.

Fecha / Date: **23-09-02** - Reservado el derecho a modificaciones sin previo aviso / *Subject to modification, without previous warning*

SR	(kg)	Alcance del gancho (m) Hook reach (m)					Portée du crochet (m) Hakenbereich (m)			2000 kg a
		40	35	30	27	25	22	20	18	
PLUMA JIB FLECHE AUSLEGER	40 m	1000	1170	1395	1570	1710	1965	2000	2000	21,7 m
	35 m	—	1250	1490	1675	1825	2000	2000	2000	23 m
	30 m	—	—	1500	1690	1838	2000	2000	2000	23,15 m



LASTRES INFERIORES LOWER BALLASTS					LESTES INFERIEURS UNTERER BALLAST		
Composición torre Tower composition Composition tour Turmaufbau	1TN12	2TN4/1TN12	3TN4/1TN12	1TR12/1TN12/2TN2	1TN4/1TN12/1TR12	3TN4/1TN12/1TR12	3TN4/1TN12/1TR12/1TB4
	2TN4/1TB4	1TN4/1TN12/1TB4	2TN4/1TN12/1TB4		3TN4/1TN12/1TB4	2TN4/1TN12/1TR12/1TB4	
Altura bajo gancho(m) Height under hook(m) Hauteur sous crochet(m) Hakenhöhe(m)	13,7	21,7	25,7	28	29,7	37,7	41,7
Lastre base (kg) Base ballast (kg) Lest de base (kg) Unterer Ballast (kg)	BTX28	29600	37000	44400	----	----	----
	BEX28	24600	32800	32800	41000	49200	----
	BTX38	24600	32800	32800	41000	49200	----
	BEX38	24000	32000	32000	40000	48000	52000
	BT38	24000	32000	32000	40000	48000	52000



JASO EQUIPOS DE OBRAS, S.A.

Ctra./Rd. Madrid - Irún Km. 415
20.213 IDIAZABAL (Gipuzkoa)
ESPAÑA / SPAIN
P.O. Box, 23 - 20.200 BEASAIN

Tel. +34 943 - 18 70 00
Fax. +34 943 - 18 70 20
E-mail: jaso@jaso.com
http://www.jaso.com

Fecha / Date: 23-09-02

Reservado el derecho a modificaciones sin previo aviso / Subject to modification, without previous warning

DELEGACION / DELEGATION