

Guidebook for Counsellors

*CAEL CE is the leading academic
English proficiency test for study in Canada*



CAEL[®]

About CAEL CE

CAEL is an important part of a student's journey to study in Canada. The test measures their ability to use and understand English at an academic level.

Prepares you for success in Canada

CAEL is the only test that provides a truly authentic representation of language use in a Canadian academic context. It evaluates how well test takers combine their speaking, reading, listening, and writing skills to perform academic tasks that they would encounter in their first year at a Canadian university or college.

Made by experts in Canada

In June 2015, Paragon Testing Enterprises, a subsidiary of The University of British Columbia (UBC), acquired CAEL from Carleton University. Since then, Paragon has reviewed and computerized the test so it can be delivered securely both in Canada and internationally. This version of the test is called CAEL CE, where CE stands for Computer Edition. CAEL CE was first launched in September 2017 and is now available at test centres across Canada. Paragon will begin offering CAEL CE at test centres internationally in 2018.

Accepted by over 180 universities and colleges across Canada

CAEL CE is accepted by over 180 institutions across Canada for academic admission, as well as by several professional organizations for certification.



CAEL CE is accepted by 100% of the English-speaking Universities Canada institutions that accept international students.



CAEL CE is accepted by 82% of the English-speaking CiCan institutions that accept international students.

Accepting Institutions

Acadia University
Ascenda School of Management
Alberta College of Art & Design
Alexander College
Algoma University
Algonquin College
Ambrose University
Ashton College
Assiniboine Community College
Athabasca University
Bishop's University
Bow Valley College
Brandon University
Brescia University College
Briercrest College and Seminary
Brighton College
British Columbia Institute of Technology
Brock University
Burman University
Campion College
Canadian Business College
Canadian College
Canadian College of Health Science and Technology
Canadian College of Naturopathic Medicine
Canadian Health Care Academy
Canadian Mennonite University
Canadore College
Cape Breton University
Capilano University
Carleton University
Carlton Trail College
Centennial College
Central Helicopter Training Academy
Coast Mountain College
College of New Caledonia
College of the Rockies
College of Veterinarians of Ontario
Columbia College
Concordia University
Concordia University of Edmonton
Confederation College
Coquitlam College
Corpus Christi College
Crandall University
Cumberland College
Cypress College
Dalhousie University
Douglas College
Durham College
Eastern College
Emily Carr Institute of Art and Design
Fairleigh Dickinson University
Fanshawe College
First Nations University of Canada
Fleming College
Gateway College
George Brown College
Georgian College
Grandesco College
Great Lakes Helicopter Corp.
Great Plains College
Helicopters Canada – Flight Training School
Holland College
Horizon College & Seminary
Humber College
Huron at Western
IH Career College
Imperial Hotel Management College
Kemptville College
Keyano College
Keyin College
KLC College
Kwantlen Polytechnic University
Lakehead University
Lakeland College
Langara College
Laurentian University
Lethbridge College
Loyalist College
Luther College
MacEwan University
Makami College Inc.
Manitoba Institute of Trades and Technology
McGill University
McKenzie College School of Art & Design
McMaster University
Medicine Hat College
Memorial University of Newfoundland
Menno Simons College
Metropolitan Community College
Mount Allison University
Mount Royal University
Mount Saint Vincent University
New Brunswick Community College
Niagara College
Nipissing University
NorQuest College
North Island College
North West College
Northern Alberta Institute of Technology
Northern Lakes College
Northern Lights College
Nova Scotia Community College
NSCAD University
OCAD University
Okanagan College
Olds College
Oulton College
Pacific Coast Community College
Pacific Coast University for Workplace Health Sciences
Parkland College
Pharma-Medical Science College of Canada
Portage College
Protege School
Queen's University
Red Deer College
Renison University College
Rhodes Wellness College
Royal Roads University
Ryerson University
Saint Elizabeth Health Career Colleges
Saint Mary's University
Saint Paul University
Saskatchewan Polytechnic
Saskatoon Business College Ltd.
Sault College
Selkirk College
Seneca College of Applied Arts and Technology
Simon Fraser University
Southeast College
Southern Alberta Institute of Technology
St. Clair College
St. Francis Xavier University
St. Jerome's University
St. Lawrence College
St. Mary's University
St. Peter's College
St. Stephen's College
St. Thomas Flight Centre
St. Thomas More College
St. Thomas University
Stanford International College of Business and Technology
The King's University College
Thompson Rivers University
Trent University
Trinity Western University
triOS College
UBC Vantage College
University of Alberta
University of British Columbia
University of Calgary
University of Guelph
University of King's College
University of Lethbridge
University of Manitoba
University of New Brunswick
University of Northern British Columbia
University of Ontario Institute of Technology
University of Ottawa
University of Prince Edward Island
University of Regina
University of Saskatchewan
University of St. Michael's College
University of Sudbury
University of the Fraser Valley
University of Toronto
University of Victoria
University of Waterloo
University of Windsor
University of Winnipeg
Vancouver Community College
Vancouver Island University
Victoria University
Western Community College
Western University
Westminster College
Wholistic Health Training & Research Centre
Wilfrid Laurier University
York University
Yorkville University

Why Choose CAEL CE

CAEL CE is the only test that provides an authentic representation of language use in a Canadian academic context. It evaluates how well students combine their English speaking, reading, listening, and writing skills to perform academic tasks that they would encounter at a Canadian university or college.

Test Features



Quick Online Results

Available online in 8 business days, sent to 5 institutions at no extra cost



Computer-delivered Test

Includes features such as a personal timer & word counter



Acceptance Across Canada

Accepted by over 180 Canadian universities and colleges, including UofT, UBC, McGill, and more



Convenient Study Materials

Free sample tests, pretest sittings, webinars, prep programs & online courses



Represents Academic Language

Includes material and activities taken from first-year university and college courses



Be Better Prepared

CAEL CE assesses language proficiency in an academic context, taking material from first-year courses

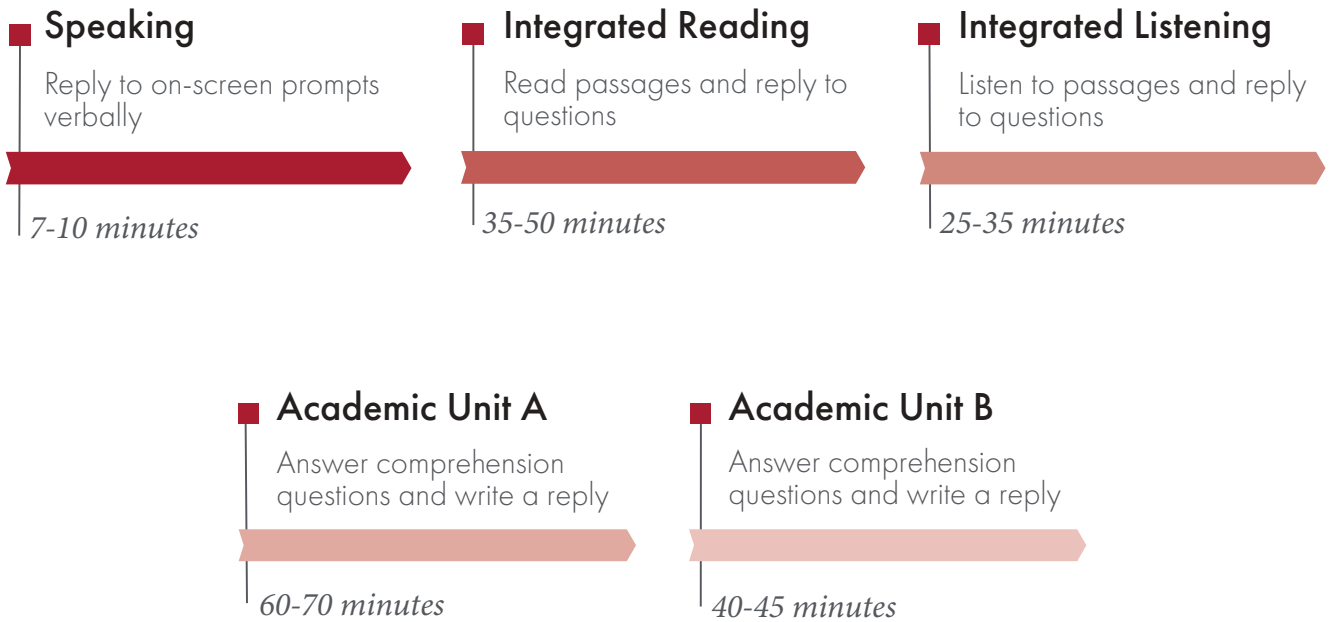
CAEL CE Test Format

CAEL CE assesses English language proficiency in an academic context. Test takers receive scores for the Speaking, Listening, Reading, and Writing components, as well as an overall score.

The test includes activities that students engage in during post-secondary study. The topics and tasks in the test are taken from first-year university courses. Some of these tasks will require test takers to use what they have read and listened to in order to answer a question by speaking or writing their response.

CAEL CE is fully computer delivered, providing test takers the opportunity to complete all test components in one sitting.

The total test time for CAEL CE is approximately 3.5 hours, and the test fee is \$268 CAD + tax (international test fees may vary).



CAEL CE Components

Part 1: Speaking

In Part 1, there are three Speaking tasks, each on a different topic:

- ✔ Task 1 & 2: Test takers will discuss various aspects of educational plans or experiences and discuss other topics applicable to academic study.
- ✔ Task 3: Test takers will describe and draw conclusions about a visual image, such as a chart or graph.

Test takers' responses to Part 1 speaking questions are evaluated on the content of their response, the accuracy of their language, and their ability to reference details in a visual image (if present).

Part 2: Integrated Reading

In Part 2, there are two types of reading passages, each followed by a set of comprehension questions. The passages resemble the types of texts students might encounter during their first year at a college or university. The comprehension questions assess test takers' abilities to:

- ✔ Comprehend the general meaning of the passage
- ✔ Identify specific information in the passage
- ✔ Make inferences based on information in the passage

In the final task of Part 2, test takers respond to one speaking question that is answered using material from one of the reading passages.

Test takers' responses to the reading comprehension questions are scored as correct or incorrect. Test takers' spoken responses are evaluated on the content of their response, the accuracy of their language, and their use of source material.

CAEL CE Components

Part 3: Integrated Listening

In Part 3, there are two types of listening passages, each followed by a set of comprehension questions. The content of the listening passages resemble the types of lectures, orientation activities, or academic event announcements students might encounter during their first year at a college or university. The comprehension questions assess test takers' abilities to:

- ✔ Comprehend the general meaning of the passage
- ✔ Identify specific information in the passage
- ✔ Make inferences based on information in the passage

In the final task of Part 3, test takers respond to one speaking question that is answered using material from one of the listening passages.

Test takers' responses to the listening comprehension questions are scored as correct or incorrect. Test takers' spoken responses are evaluated on the content of their response, the accuracy of their language, and their use of source material.

Part 4: Academic Unit A

There are three sections in Part 4, each of which is about an aspect of the same academic topic:

- ✔ One reading passage with comprehension questions
- ✔ One listening passage with comprehension questions
- ✔ One writing question requiring an extended response, using material from both the reading passage and the listening passage.

Part 5: Academic Unit B

There are three sections in Part 5, each of which is about an aspect of the same academic topic. The topic in Part 5 is different than the topic test takers encounter in Part 4.

- ✔ One reading passage with comprehension questions
- ✔ One listening passage with comprehension questions
- ✔ One writing question requiring a short response, using material from the reading passage or the listening passage.

In Part 4 and Part 5, test takers' responses to the reading and listening comprehension questions are scored as correct or incorrect. Test takers' written responses are evaluated on the content of their language, the accuracy of their language, and their use of source materials.

CAEL CE Study Plans

Self-directed

Workbooks

CAEL Skills Workbook

Textbooks

CAEL CE: An Overview

Online Study Programs

Academic Vocabulary Builder

Instructor-led

Webinars

CAEL CE Online Course
CAEL CE Writing and Speaking Workshop
Overview of CAEL CE

Preparation Programs

CAEL CE Preparation Program

Practice-based

Free Sample Test

CAEL CE Sample Test

Practice Tests

CAEL CE Online Practice Tests, 1-4

CAEL CE Band Scores

After completing CAEL CE, test takers receive a score report that details individual English proficiency scores for the Speaking, Reading, Listening, and Writing components as well as an overall score. CAEL CE scores are reported on a scale from 10 to 90, with accompanying descriptors of what this performance represents. The overall score is calculated as an equally weighted average of the four component scores rounded to the nearest ten-point interval.

CAEL CE Score	CAEL CE Band Descriptor
80–90	Expert: Demonstrates a high level of competence, accuracy, and effectiveness in academic/professional settings
70	Adept: Uses generally accurate language in most settings; some limitations in flexibility are evident
60	Advanced: Displays competence in academic or professional settings
50	High Intermediate: Exhibits some competence in academic or professional settings; communication may break down in places
40	Intermediate: Demonstrates some ability to comprehend and articulate complex ideas and arguments typical of academic or professional settings
30	High Beginner: Expresses basic ideas about familiar topics in routine settings
10–20	Low Beginner: Communicates with limited ability

Sample Score Requirements

Institution	Required Score
University of Manitoba	CAEL 60, IELTS 6.5
Western University	CAEL 60, IELTS 6.5
University of Toronto	CAEL 70, IELTS 6.5
McGill University	CAEL 70, IELTS 6.5
triOS College	CAEL 60, IELTS 6.0
George Brown College	CAEL 60, IELTS 6.0
Langara College	CAEL 60, IELTS 6.5
Southern Alberta Institute of Technology	CAEL 60, IELTS 6.0



Reminder!

Required CAEL scores are set by each institution. Be sure to check the admission requirements for each institution in advance.

How Test Takers Access CAEL CE Test Results

Test takers can easily access their CAEL CE results online. Test results are available in just 8 business days after the CAEL CE Test has been completed. For test takers applying to a number of institutions, CAEL CE results are sent directly to the institution, and test takers can select up to 5 institutions to receive their scores at no extra cost. With the CAEL Scores and Identity Verification System, institutions can directly verify test taker scores, ensuring the safe and accurate transmission of test taker scores to their institutions of choice.



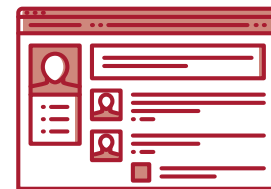
Direct to Institutions

Test takers select the organizations that will receive CAEL scores during test registration



Updates via Email

Test takers will receive test day confirmations and score results via email



Account Dashboard

Test takers can sign into their accounts at cael.ca to see their results

How to Register for CAEL CE Online

Registering for CAEL CE online is fast and easy:

1

Create a CAEL Account

Visit cael.ca and click on the "Sign In" link at the top of the page. This will take test takers to the account page, where they can create a CAEL account. Test takers must upload a photo of themselves when creating a CAEL account to ensure their identity.

2

Sign into a CAEL Account

After creating a new CAEL account or signing into an existing account, test takers can register for a test.

3

Register for CAEL CE

During registration test takers select the country, region, and city in which they will take the CAEL CE Test. Test takers can then choose an available test centre and testing date.

4

Choose the identification to bring

Test takers can choose the type of personal identification that they will provide on test day from a list of acceptable identification choices.

5

Confirm information and payment option

Test takers can pay via credit card online, or submit a paper test registration form through the mail with an alternative form of payment.

For test takers that need to cancel or reschedule their test sitting, review the transfer and cancellation policy here: cael.ca/transfer-cancellation-retake-policies

Contact Us

Visit cael.ca to learn more about Canada's leading academic English language test, or email info@cael.ca for more information.

Follow [@CAELTest](https://twitter.com/CAELTest) on social media

