

The Hansen Home in Maui

Please review this document prior to arrival AND upon departure!



Karl & Marguerite Hansen, Erik Hansen - Owners

Karl cell: (650) 255-7332

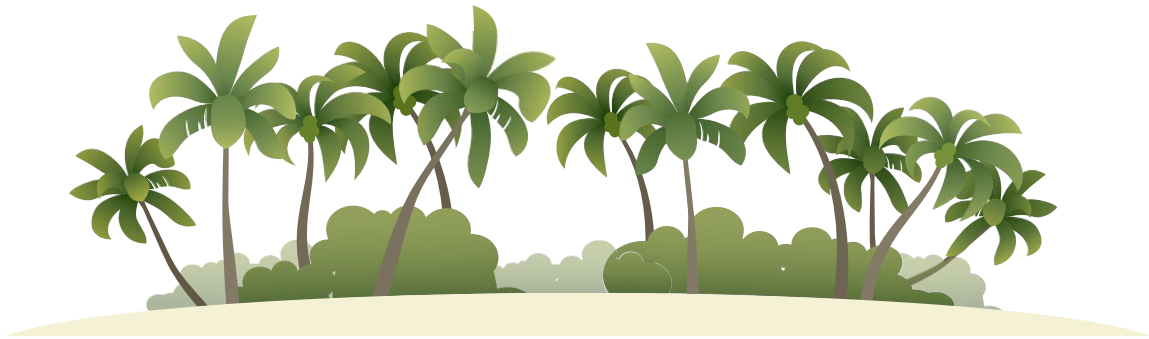
Marguerite cell: (650) 575-5670

Erik cell: (650) 255-7334

Aloha!

We are excited that you will be visiting our second home in beautiful Wailea, Maui! While we do not rent our condominium, we welcome you as a special guest and hope that you enjoy your stay. Because it is not a rental, we do NOT maintain a property management firm. This can be problematic if you are in need of immediate assistance; thus, another reason for us sharing this information!

This document introduces you to all of the key elements of our home. Please do take the time to know what it says prior to your arrival. It will also be useful upon your arrival (a full copy is in the condo unit).



Where is the Condo?

#10 Wailea Ekolu Place, Unit #1105

Wailea (Kihei), Maui, HI 96753

Located in the serene Wailea Ekolu Village, we are located on the slope just above the Blue Golf Course and the Grand Wailea Hotel. We are a 10 minute stroll down to the beach or the Wailea Shopping Center.

When arriving, enter on the left where you see the **"Wailea Ekolu Buildings 10-12"** sign. Turn in, head up and to the right, and park! We are on the right hand side of the circle parking area.

In Building #11... downstairs... #1105.

Aloha!

Checking In:

There is nobody to see when you arrive... you are on your own!

Preferred Arrival Time: After 4:00 p.m.

Preferred Departure Time: Before 12:00 Noon

This timeframe allows for our housekeeper, Nikki, to properly turnover the condo for the next guest.

If you have an early morning arrival, please book the condo a day earlier. If you expect to leave later in the afternoon, please book it for another day. In any case, please tell us your exact travel timing!

You should plan a MINIMUM of 90 minutes to get to the airport and checked in... during heavy traffic, this should be extended to 2 hours. Please plan accordingly.

Keys

There are NO KEYS to the front door!

You will be assigned a 4-digit code to use on the electronic Schlage Dead Bolt.

TO OPEN DOOR: Enter your code, then turn doorknob to the right.

The door automatically locks after four minutes.

If you forget your code you can call/text me, or go to the manager who will give you their emergency code.

Shutters

Upon arrival you should find all shutters, windows, and doors closed.

OPEN THEM! (please leave the bottom ground level set of shutters fairly closed due to garden sprinklers).

When the gardeners arrive, you may want to shut them as this helps reduce wind-borne dust.

Air Conditioning

One of the great beauties of the islands is the constant trade winds... We rarely use the AC units, unless it is deathly hot, in which case I close the doors to the bedroom and cool down the one room with the AC for the evening.

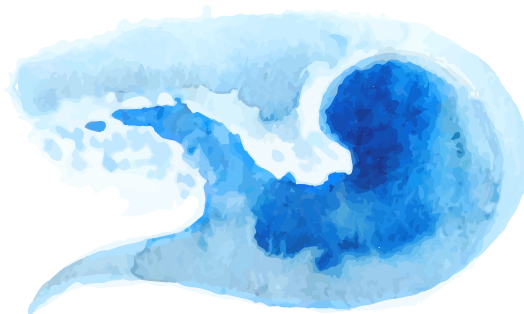
Use of the AC units is up to you. Please keep it **off** when not needed! The use of the three AC units can easily add \$25/day to the cost of operation! Upon departure, please shutter all windows, lock all doors, and ensure lights and **AC units are powered off**.

Please see AC instructions.

WiFi Access

Network Name is: Ekolu_1105

Password is: Ekolu1105



The Condo:

Beach Equipment

We have a basic supply of Boogie Boards, Snorkels, and Masks stored in the shed just outside the guest bedroom. There are also Sand Mats, Beach Chairs, and other outdoor equipment stored inside the Guest Bathroom Closet.

Please use the outdoor hose to wash off ALL GEAR and try to keep all sand OUT DOORS!

The combination to the Shed is **"SHED"**

Want more gear? Halfway down the hill is Snorkel Bob's. Cost is \$15/day for a full set-up. They also have weekly rates and prescription masks, too. And they have good updates on all local beaches.



All That Sand!

Even with a thorough post-beach rinse at the public showers, your body is still hiding a massive amount of sand.

In order to avoid costly plumbing service calls, please rinse the sand off of your body, clothes (pockets), and shake out your towel **at the beach...** take more than a 30 second cursory shower, and turn all pockets inside out!

The Hose:

We have two hoses. It is best to use the hose by the Lanai and wash off and dry all of your gear.

Sand mats:

There are sand mats in the Guest Bathroom Closet. These mats are much better than towels when sitting at the beach! Why? Because the wonderful flour-like sand of Wailea penetrates the cloth towel and then eats the washing machine for lunch... it is really hard to get the sand out of your towel, and that lunch can cost \$4,000!

Sunscreen

It is imperative to adequately hydrate, and to use proper sunscreen when enjoying the outdoors in Hawaii.

SPRAY SUNSCREEN SHOULD NEVER BE APPLIED WHEN YOU ARE INSIDE OR NEAR THE CONDO! A \$1,000 cleaning fee will be charged if spray sunscreen is used in any area of the condo!!!

Furniture: If you have sunscreen slathered to your body, please use your clean/dry beach towel as a cover to the furniture when sitting indoors.

Ants, Centipedes, Lizards, and More...Oh My!

The islands are home to lizards, ants, cockroaches, and more!

The Complex routinely sprays which helps to keep the bugs at bay, but that will never stop them all. Please be sure to keep screen doors closed when the glass doors are open.

Note that the sugar ants are so small that they can easily track indoors. It is imperative to keep all sweets and breads cleaned up. Store syrup and other sweet items in the refrigerator. If you do have ants, simply wipe them up and keep the areas clean.

Towels and Linens

Sheets, pillows, bath towels, beach towels, etc. are all provided on site.

The Lanai

This is just a wonderful place to enjoy meals, or lay down and read your favorite book. The HOA is serious about keeping the entire grounds looking well kept. This especially includes towels or clothes draped over the rails... both on the Lanai and on the front entry railings. PLEASE DON'T!

Also... if you choose to move a chair out onto the lawn, IT MUST HAVE A PERSON IN IT AT ALL TIMES! If you retire from the chair, it must be immediately returned to the Lanai. This is important as our unit is fairly easily observed by the manager!

Washer-Dryer

Be sure the Hot Water Circuit Breaker is ON (in electric box behind master bedroom door). Also, be sure that the water to the Washer-Dryer is also ON prior to use! Soap is provided. Let us know if it is running low.

Pets

Sorry... NO Pets of ANY KIND are allowed in Unit #1105.

"Bogie" the cat is on staff to keep the little critters out... but he needs to stay out of the Condo also!!!

Safety and Security

The Wailea Community and the Ekeolu complex each have their own 24/7 security. (This is why we must share your full name and dates of stay with the main office!) That said, if you have belongings that are of any value, please use the personal safe that we have provided in the closet of the guest bedroom. You can use your own personal 4-6 digit code, or you can lock and unlock the safe with the use of the same credit card!



The Kitchen:

Condiments and Unused Food

Again, this is our family home. We try to keep things clean, fresh, and well-supplied. If something is out of date, throw it away and try to replace it if it's something that everyone uses. We will happily reimburse you for unusual needed expenditures, just let us know.

Electric BBQ Grill

STOP: Make sure BBQ is OFF prior to plugging in!

There is an electric BBQ grill on the lanai. The BBQ plug goes into the hidden receptacle just under the stone pass-thru counter. If the BBQ unit is not working, it is most likely because the GFI plug has tripped to OFF. Look indoors to the left of the kitchen sink for the GFI plug. The small light should be green. If not, press the reset button!

The HOA states grilling be done between the hours of 5:00 - 9:00 p.m. The upstairs neighbors also appreciate this!

It is imperative that the grill and the area be kept clean of all residual foods. If it is not, you will most likely inherit a full tribe of bugs by early morning.

If it needs cleaning or repair that you are not able to attend to, send us a note, or leave a note for Nikki. Please keep it tightly covered after it has been cleaned and cooled down.

The In-Sink Garbage Disposal

Please avoid using the garbage disposal when possible due to smaller than normal pipes. If you put any kind of starch (potatoes, rice, etc.), or things like celery or any other fibrous material... plan on a total blockage, a pain in the side, and an expense that we will let YOU pay for!

Please be smart, and conservative in the use of this limited system! Many thanks!

Ekolu Village:

You are now in one of the most beautiful areas of the world. As part of that *open air* beauty, the owners at Ekolu Village decided that they want to maintain a level of calm serenity as part of their daily lifestyle. This is a core part of the Hawaiian culture.

It is very important to respect the desires of the Home Owners Association (HOA).

Please remember you have neighbors on all sides, and most residents live with their windows and blinds open to the constant breeze... and your noise!

Please maintain appropriately minimized sound levels on all music, TV, and other possibly noisy activities... (Grinding the coffee beans at 5:00 a.m. Yes, there is actually a rule about that!).

Residents and guests are expected to maintain *Peace and Quiet* between the hours of 10:00 p.m. and 8:00 a.m.

Smoking is not allowed ANYWHERE on property!

Swimming Pools

There are two pools. One is just above our parking lot area. The other is below the road and management office. **Pool hours are from 8:00 a.m. to 9:00 p.m.** Use the Blue Key that is located in the entry bowl to access the pool areas. Please observe the pool rules. Outdoor showers and restrooms are on site.

Garbage and Recycle Area

Walk up to the parking area and you will see it on the uphill side between two gates. Please recycle and keep garbage in secured garbage bags.

The Management Office

The complex manager is Denis McNulty. His wife Jean also assists him.

The management's office is located across the street as you walk down from our parking area. The one thing that they maintain is a wall of brochures on local sites and attractions. Help yourself! They DO NOT operate as our (or anyone's) property manager. As our unit is NOT for rent, please remember that you are enjoying the unit as a Hansen friend or Hansen family member... please call us for any issues.

Obviously, any urgent issues can and should be brought to their attention. We are required to notify them of all of our guests... thus, they already know that you are here! Their number is: 808-879-2222.

U.S. Mail

If you are enjoying an extended visit you can ask friends to address mail to the 1105 unit. The mailbox is located by the management office and the key is the small one labeled "MAIL BOX."

The full mailing address is:

10 Wailea Ekolu Place

Unit 1105

Kihei, Maui, HI 96753

Getting to the Beach

Rule #1: LEAVE ALL VALUABLES at the Condo! Leave your car empty... beach parking lots are the #1 hit zone for thieves!

All Beaches in Hawaii are Public Beaches.

Just down the hill to the left or to the right are four world class beaches! Our new favorite is to the right, just past the entrance to the Marriott Hotel: Ulua/Mokapu Beach.... Also, down the hill and to the left are the Grand Wailea Hotel and the Four Seasons Hotel. Located between these

two hotels is another PUBLIC parking area, public shower, public bathroom, and public walkway to the beaches (just past the showers veer to the right for beaches at the Grand Wailea, or left for some rocky views and the beach at the Four Seasons).

If you want to explore some awesome beaches, we recommend a quick drive down the road to Makena landing. Also, Big and Small Beach (Oneloa Beach). But, be forewarned, the surf at Big Beach can be rough and dangerous!



Cleaning

We appreciate your daily efforts to keep the property in relative clean condition. Our friend Nikki Lee will come in and do a 5 hour complete clean-up upon your departure.

Please text Nikki upon departure. Refer to Eku 1105 when texting or leaving messages.

Nikki Lee can be reached by text/phone at: 808-298-5089 (Maui Time).

Wear and Tear/Breakage

If something needs attention, stops working, is wearing out, or breaks... whatever. Feel free to replace it, or call us and we will find a solution. We will pay the tab, unless you did something stupid and you feel so inclined.

The real issue is: **Let us know if something needs attention!**

This is a *Family* home and we are NOT a property management rental agency, but we do need to know when something needs attention. Nikki works hard to keep the place clean. Feel free to call her if there is an issue that she can handle. We deeply appreciate you letting us know whenever anything is less than adequate!



Wailea Dining Guide:

AMA Bar & Grill

The Fairmont Kea Lani, Maui
808.875.4100 *Hawai'i Modern*

Bistro Molokini

Grand Wailea
800.888.6100 *Island Cuisine*

Botero Gallery Bar

Grand Wailea
800.888.6100 *Cocktails*

Bumbye Beach Bar

Andaz Maui at Wailea
808.573.1234 *Cocktails*

Café Kula Marketplace

Grand Wailea
800.888.6100 *Gourmet Deli*

Caffé Ciao Bakery & Deli

The Fairmont Kea Lani, Maui
808.875.4100 *Gourmet Deli*

The Restaurant at Hotel Wailea

Hotel Wailea
808.879.2224 *Italian/French*

Cheeseburger Island Style

The Shops at Wailea
808.874.8990 *American*

The Coffee Bean & Tea Leaf

The Shops at Wailea
808.891.2045 *Coffee/Pastries*

DUO

Four Seasons Resort
808.874.8000 *Steak/Seafood*

Fabiani's Wailea

Wailea Gateway Center
808.874.1234 *Pizza/Pasta*

Ferraro's Bar e Ristorante

Four Seasons Resort
808.874.8000 *Italian*

Gannon's

Wailea Gold Course
808.875.8080 *Hawai'i Regional*

Grand Dining Room

Grand Wailea
800.888.6100 *American*

Honolulu Coffee Co.

The Shops at Wailea
808.875.6630 *Coffee Shop*

Honua'ula Lu'au

Grand Wailea
808.875.7710 *Lu'au Show*

Humuhumunukunukuapua'a

Grand Wailea
800.888.6100 *Pacific Rim*

Joe's

Wailea Tennis Club
808.875.7767 *Hawai'i Regional*

Ka'ana Kitchen

Andaz Maui at Wailea
808.573.1234 *Hawai'i Regional*

Kō

The Fairmont Kea Lani, Maui
808.875.2210 *Plantation Era*

Kumu Bar & Grill

Wailea Beach Marriott
808.879.1922 *American*

Lappert's Hawaii

The Shops at Wailea
808.879.1711 *Ice Cream*

Lehua Lounge

Andaz Maui at Wailea
808.573.1234 *Cocktails*

Lobby Lounge

Four Seasons Resort
808.874.8000 *Cocktails*

Longhi's

The Shops at Wailea
808.891.8883 *Mediterranean*

Luana Lounge

The Fairmont Kea Lani, Maui
808.875.4100 *Cocktails*

Māla Restaurant & Lounge

Wailea Beach Marriott
808.875.9394 *Mediterranean*

Manoli's Pizza Company

100 Wailea Ike Drive
808.874.7499 *Italian*

The Market by Capische

Wailea Gateway Center
808.879.2433 *Gourmet Pantry*

Matteo's Osteria

Wailea Town Center
808.891.8466 *Italian*

Migrant Maui

Wailea Beach Marriott
808.875.9394 *Modern Local*

Mokapu Market

Andaz Maui at Wailea
808.573.1234 *Snacks*

Monkeypod Kitchen

Wailea Gateway Center
808.891.2322 *Handcrafted*

Morimoto Maui

Andaz Maui at Wailea
808.573.1234 *Japanese*

Mulligans on the Blue

100 Kaukahi St.
808.874.1131 *Irish/American*

Nick's Fishmarket Maui

The Fairmont Kea Lani, Maui
808.879.7224 *Modern/Seafood*

Pita Paradise

Wailea Gateway Center
808.879.7177 *Mediterranean*

Polo Beach Grille & Bar

The Fairmont Kea Lani, Maui
808.875.4100 *American*

Ruth's Chris Steak House

The Shops at Wailea
808.874.8880 *Steaks/Seafood*

Spago

Four Seasons Resort
808.879.2999 *Pacific Rim*

Starbucks

Wailea Beach Marriott
808.874.7981 *Coffee Shop*

Subway

Wailea Gateway Center
808.875.7827 *Sandwich/Deli*

Te Au Moana

Wailea Beach Marriott
877.827.2740 *Lu'au Show*

Tommy Bahama

The Shops at Wailea
808.875.9983 *American/Caribbean*

Volcano Grill & Bar

Grand Wailea
800.888.6100 *American*

Whalers General Store

The Shops at Wailea
808.891.2039 *Deli*

Resources:

Nicole Lee (Nikki) - Keeps #1105 Clean!	808-298-5089
Oceanic Time Warner Cable Company	808-643-2100
Lyons Plumbing & Sewer (Leon)	808-879-3400
Keone's Electric Service	808-348-1595
Paul's Appliance Repair	808-879-2229
Kihei Rent a Car	808-879-7257

Groceries and Shopping

There is a Costco near the airport in Kahului. This is the best place to stock up on large quantities of anything. For regular grocery shopping, there is a Safeway just a few minutes away from the condo in the Piilani Village Shopping Center. You can also find some essentials and prepared foods at the Island Gourmet Market, a quick walk down the street in the Shops at Wailea.

Island Gourmet Market: The Shops at Wailea, 3750 Wailea Alanui Drive, Wailea, HI 96753 (808) 874-5055

Safeway: 277 Piikea Avenue, Kihei, HI 96753 (808) 891-9120

Costco: 540 Haleakala Hwy, Kahului, HI 96732 (808) 877-5241



Departure Checklist:

Laundry: If you want to help out with costs and timing, consider this: when you wake up on your departure morning, strip the sheets and pillow cases and put them in the washer... then the dryer. Pile clean sheets on the bed. If you can do another load with the towels, that would be awesome, too!

In no case should you leave anything wet in the washing machine... (it takes 38 minutes to do a full load)... Throw it in the dryer and turn it on as you walk out the door... that is okay!

Food: Clean up any food that will attract bugs. Throw away food in the fridge that will spoil in the next week. (Leave jams, jellies, catsup, booze, etc.)

Garbage: Please take the garbage out one last time.

BBQ: Please unplug it, and be sure that it is clean of food; finally please place the cover on it tightly.

Close: All windows, blinds, doors, etc... and the drapes, too!

Lock: All doors.

Keys: Leave the Pool and P.O. Box Key in the front entry bowl.

Power: Please turn off all other power at the unit: Air Conditioners, TVs, etc., EXCEPT the router in the living room. (TV Cisco boxes will still show the time.)

TEXT NIKKI AS YOU PREPARE TO LEAVE

at 808-298-5089.

Please state: "Departing Ekolu 1105 Now" (and please report any final issues or problems). Lock the door!

Aloha! We are delighted that you were able to stay in our home.

Have a safe trip home... We hope you enjoyed your stay!