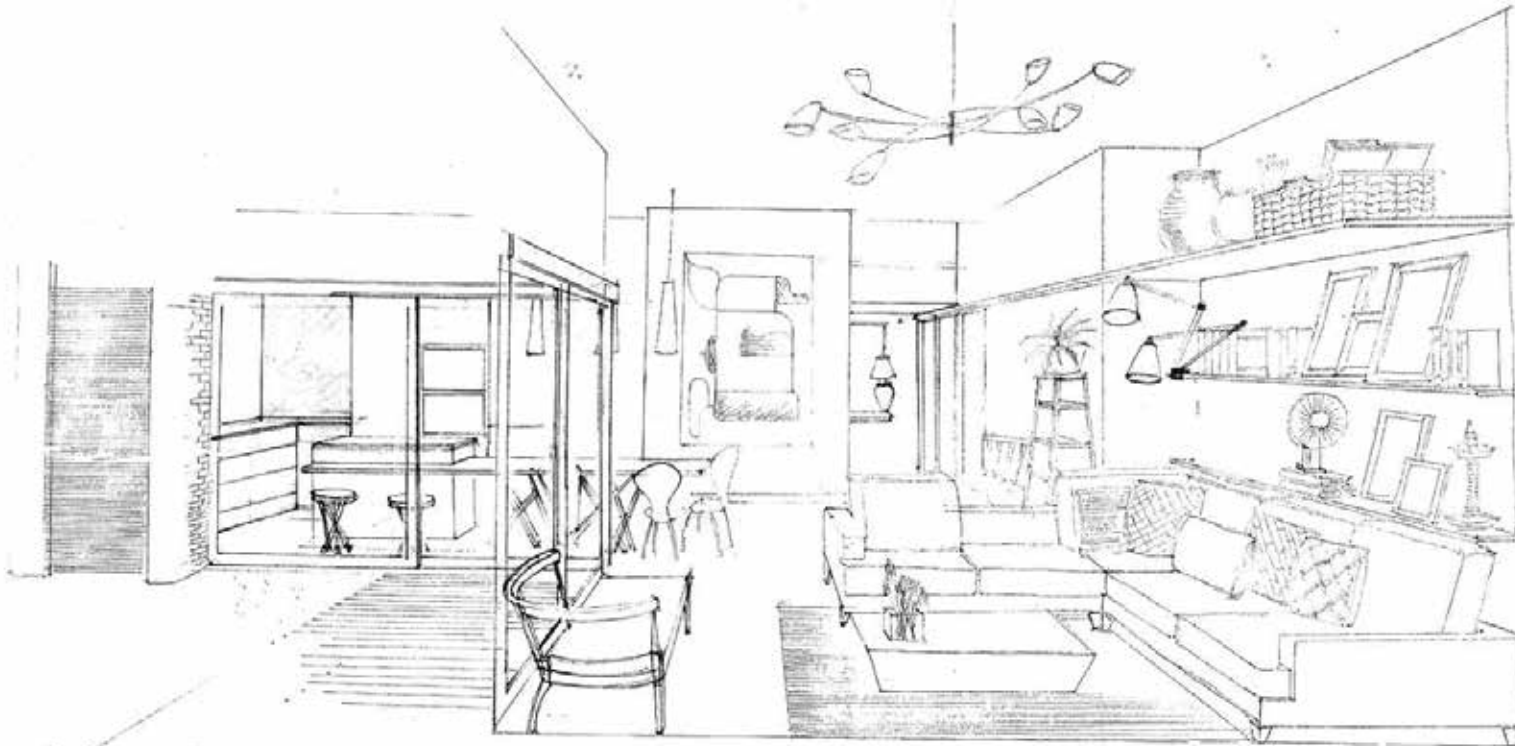


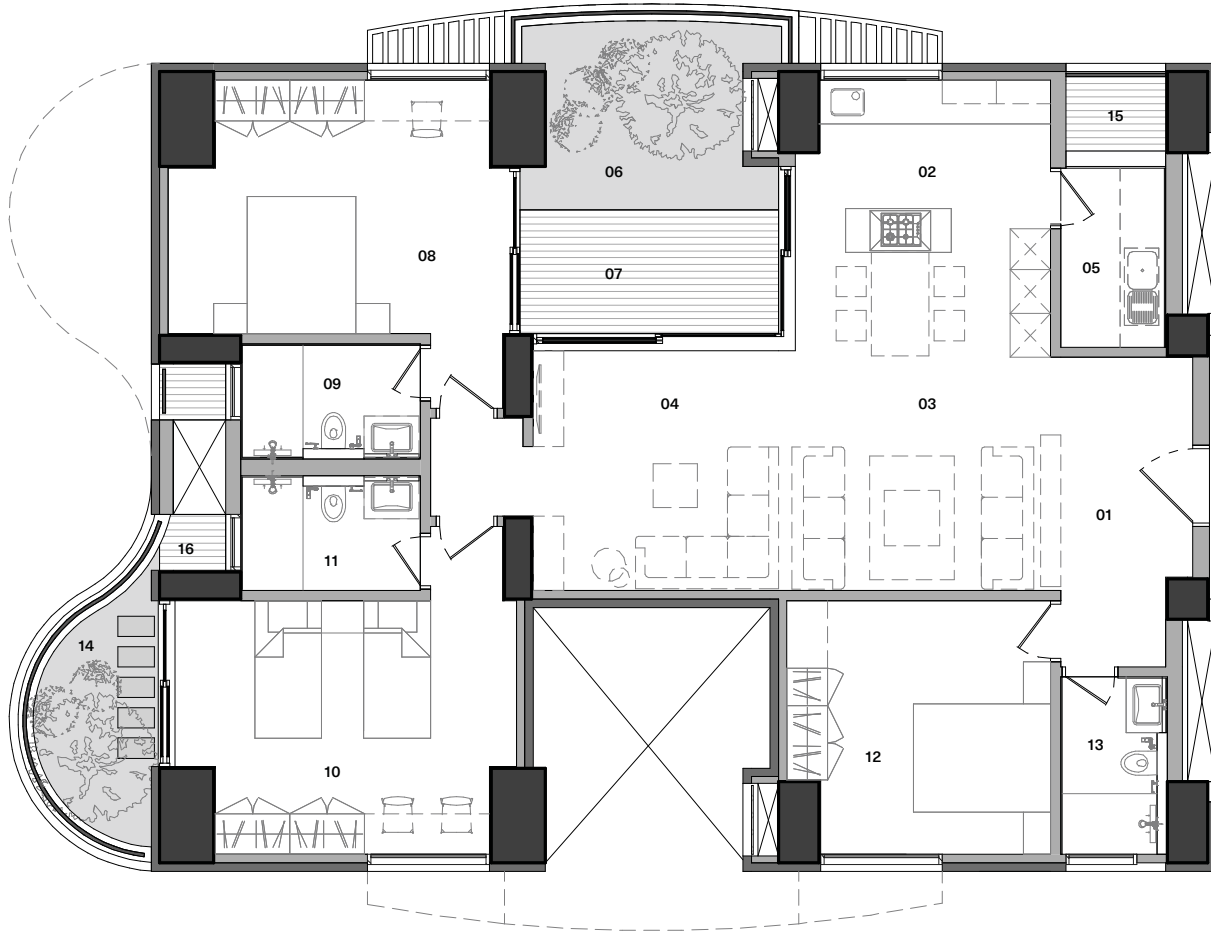


H2O





The 3 bedroom H20 home is designed around the concept of a traditional Indian courtyard with the kitchen, living, dining and master bedroom all opening out onto a double height garden. The garden is especially designed to hold a full grown small tree, bringing nature into the heart of the home. Simple, clean lines and free flowing spaces ensure that the interiors don't feel dated after some time. Each home is open on three sides and provided with generous windows and French windows to bring in plenty of natural light. Earthy natural stone flooring and wood windows provide the warmth that you can always expect from a Total Environment home.



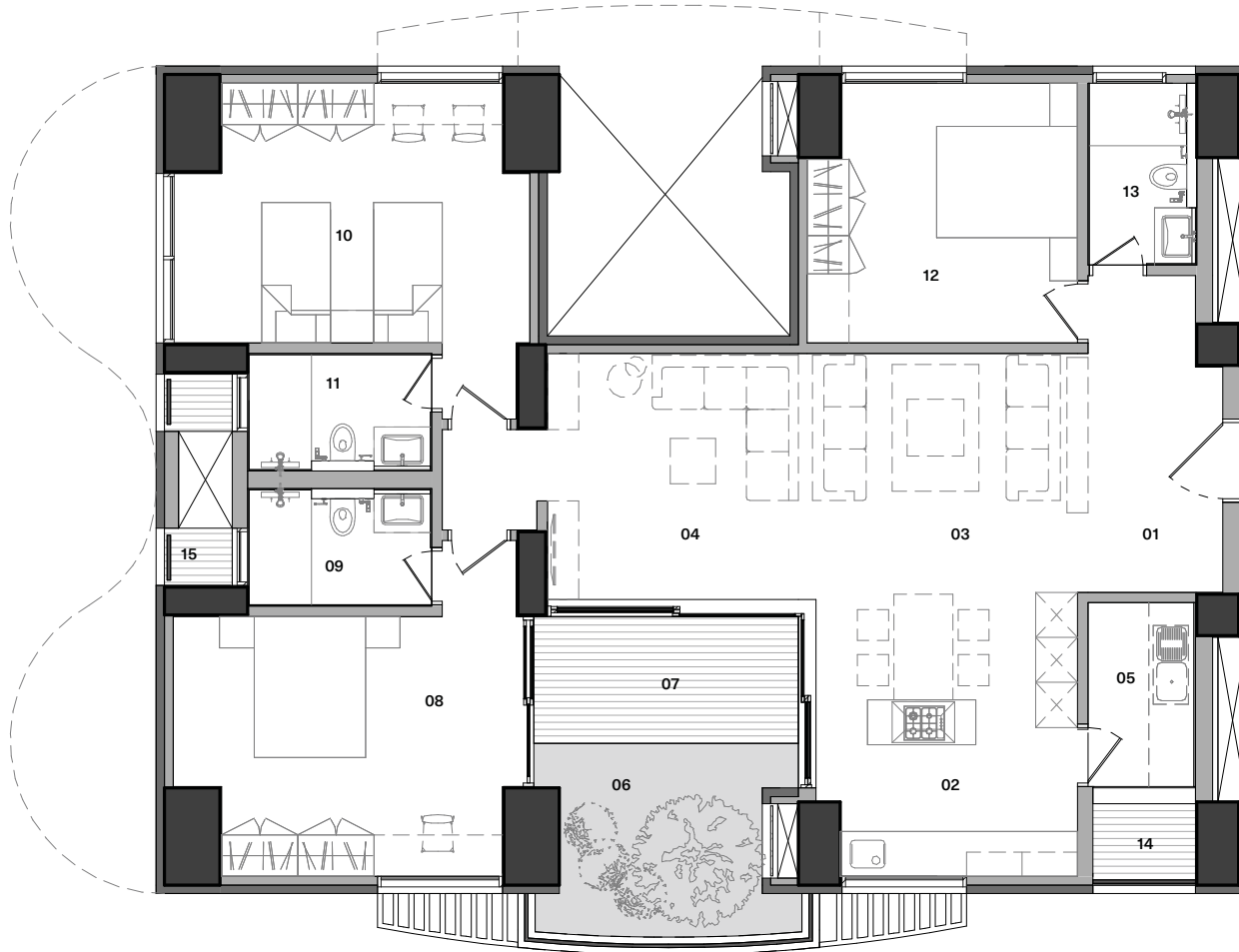
Carpet Area	1460 sq.ft.
Outdoor Spaces	287 sq.ft.
Built-up Area	1927 sq.ft.
Reference Saleable Area	2409 sq.ft.

## Legend

- 01 Foyer - 6'11" x 15'0"
- 02 Dining & Kitchen - 12'6" x 12'10"
- 03 Living - 12'6" x 12'0"
- 04 Family - 12'9" x 12'0"
- 05 Utility - 5'0" x 8'8"
- 06 Terrace Garden - 12'7" x 9'2"
- 07 Deck - 12'7" x 6'0"
- 08 Master Bedroom - 16'3" x 12'4"
- 09 Master Bathroom - 8'7" x 5'5"
- 10 Children's Bedroom - 16'7" x 12'4"
- 11 Children's Bathroom - 8'7" x 5'5"
- 12 Guest Bedroom - 12'10" x 12'4"
- 13 Guest Bathroom - 5'0" x 8'6"
- 14 Tree Garden - 5'11" x 11'10"
- 15 Service Platform - 4'10" x 3'10"
- 16 Service Platform - 3'2" x 10'0"

*Furniture items have been shown here for providing a reference only. Please refer the section on specifications to understand what is provided under various purchase options.*

# Floor Plans | H20v1b



Carpet Area	1453 sq.ft.
Outdoor Spaces	211 sq.ft.
Built-up Area	1844 sq.ft.
Reference Saleable Area	2305 sq.ft.

## Legend

- 01 Foyer** - 6'11" x 15'0"
- 02 Dining & Kitchen** - 12'6" x 12'10"
- 03 Living** - 12'6" x 12'0"
- 04 Family** - 12'9" x 12'0"
- 05 Utility** - 5'0" x 8'8"
- 06 Terrace Garden** - 12'7" x 9'2"
- 07 Deck** - 12'7" x 6'0"
- 08 Master Bedroom** - 16'3" x 12'4"
- 09 Master Bathroom** - 8'7" x 5'5"
- 10 Children's Bedroom** - 16'7" x 12'4"
- 11 Children's Bathroom** - 8'7" x 5'5"
- 12 Guest Bedroom** - 12'10" x 12'4"
- 13 Guest Bathroom** - 5'0" x 8'6"
- 14 Service Platform** - 4'10" x 3'10"
- 15 Service Platform** - 3'2" x 10'0"

*Furniture items have been shown here for providing a reference only. Please refer the section on specifications to understand what is provided under various purchase options.*





Visualisation of Living- Dining

*This image depicts the fully furnished product specification (different from green, blue and purple)*





**Visualisation of the Terrace Garden & Deck**

*This image depicts the fully furnished product specification (different from green, blue and purple)*

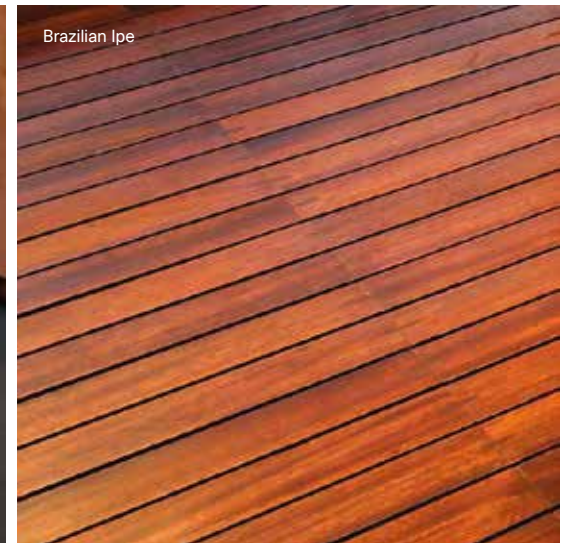
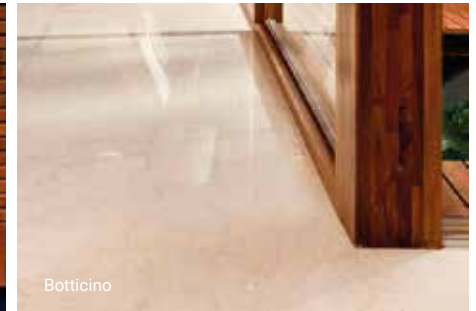


# Specifications



GREEN  
BLUE  
PURPLE

STRUCTURE				
<b>Shell</b>	RCC frame structure with a height of 9'6" from slab top to slab top, except in the case of sloped or curved roofs.	•	•	•
<b>Masonry</b>	High quality exposed brick masonry using specially procured high-strength terracotta wire-cut bricks and / or stone masonry for parts of the exterior with deep-set waterproof pointing. All other masonry in terracotta blocks, table moulded brick, Aerocon blocks or Concrete blocks with plaster.	•	•	•
FLOORING & DADO				
<b>Living &amp; Dining</b>	Kota stone laid with paper joints and finished with 8 coats polish	•		
	Imported marble laid with paper joints and finished with 8 coats polish		•	•
<b>Kitchen</b>	Green Marble flooring & Counter with glass or glazed tile dado above the counter up to a height of 2'	•		
	Imported marble laid with paper joints and finished with 8 coats polish on the floor. Marble / granite counter with glass or glazed tile dado above the counter up to a height of 2'		•	•
<b>Utility / Laundry</b>	Green Marble flooring. No dado or counter.	•	•	•
<b>Deck / Outdoor</b>	Stone pavers	•	•	
	Brazilian Ipe or other natural hardwood / Engineered Solid Wood, finished with oil			•
<b>Master Bedroom</b>	Kota stone laid with paper joints and finished with 8 coats polish	•	•	
	Hardwood flooring			•
<b>Master Bathroom</b>	Indian Marble on the floor and counter, Marazzi or equivalent tile / glass dado on the walls up to 7' in shower area	•		
	Imported marble on floor and counter, Marazzi or equivalent tile / glass dado on the walls up to 7' in shower area		•	•
<b>Children's Bedroom</b>	Kota stone laid with paper joints and finished with 8 coats polish	•	•	•
<b>Children's Bathroom</b>	Marble Counter. Marazzi or equivalent tiles on the floor and walls up to 7' in shower area	•	•	
	Imported Marble on the floor and counter, Marazzi or equivalent tiles / glass dado on the walls up to 7' in shower area			•
<b>Guest Bedroom</b>	Kota stone laid with paper joints and finished with 8 coats polish	•	•	•



The reference images showcase options for the specific products/finishes marked on the image.

# Specifications



Wash basin



Towel rack



Bathroom fittings

GREEN  
BLUE  
PURPLE

<b>Guest Bathroom</b>	Marble Counter. Marazzi or equivalent tiles on the floor and walls up to 7' in shower area	●	●	
	Imported Marble on the floor and counter, Marazzi or equivalent tiles / glass dado on the walls up to 7' in shower area			●

## SANITARY & PLUMBING

<b>Water Closets</b>	Western style, porcelain EWC of Kohler or equivalent make in all bathrooms	●	●	●
<b>Health Faucets</b>	Health faucets of Schell or equivalent make in all bathrooms	●	●	●
<b>Wash Basins</b>	Porcelain wash basins of Kohler or equivalent make shall be provided in all bathrooms.	●	●	●
<b>Kitchen Sink</b>	Stainless steel sink with drain board	●	●	●
<b>Cockroach / Floor traps</b>	A detachable stainless steel cockroach trap with lid of Chilly or equivalent make in all bathrooms	●	●	●
<b>Shower Area</b>	Glass partition with door for the shower area in the Master & Children's bath			●
<b>Overhead Showers</b>	Showers of Grohe or equivalent make in all bathrooms	●	●	●
	One Rain shower of Grohe or equivalent make in the Master bath			●
<b>Hand Showers</b>	Hand showers of Grohe or equivalent make in the Master and Children's bathrooms			●
<b>Faucets</b>	All faucets shall be CP, heavy body metal fittings of Grohe or equivalent make	●	●	●
<b>Bath accessories</b>	Towel rings, toilet paper holders, towel racks and soap dish in Master, Children's and Guest Bathrooms - all of Grohe or equivalent make.		●	●
<b>Washing Machine Point</b>	One cold water inlet and drainage outlet for a washing machine in the Utility / Laundry room.	●	●	●
<b>Plumbing</b>	Internal water supply lines & drainage lines in cPVC pipes. Hot water lines in multiple layer composite pipes. Sewage lines in PVC pipes. Provision for centralised hot water connection to the shower and wash basin in each bathroom and to the sink in the kitchen.	●	●	●

## ELECTRICAL

<b>Wiring</b>	All wiring of Havells or equivalent make, concealed in PVC conduit pipes.	●	●	●
<b>Switches &amp; Sockets</b>	All switches of Anchor or equivalent make.	●	●	●

The reference images showcase options for the specific products/finishes marked on the image.



# Specifications



		GREEN	BLUE	PURPLE
Living / Dining	3 no.s - 5 amp switch & socket	•	•	•
Kitchen	3 no.s - 5 amp switch & socket, 4 no.s - 15 amp switch and socket	•	•	•
Utility	1 no -5 amp switch & socket, 1 no. -15 amp switch and socket	•	•	•
Master Bedroom	2 no.s - 5 amp switch & socket	•	•	•
Other Bedrooms	2 no.s - 5 amp switch & socket	•	•	•
Bathrooms	1 no - 5 amp switch & socket	•	•	•
Telephone	1 Telephone Point each in living and master bedroom	•	•	•
Entertainment	1 Television Point in either living or family.	•	•	•
Light Fixtures	Light fixtures in the home			
Power & Back-up	Power connection of 3 KVA with back-up power from Diesel Generator	•		
	Power connection of 5 KVA with back-up power from Diesel Generator		•	•
<b>FENESTRATION</b>				
Frames & Shutters	Door and window frames and shutters in Engineered Solid Wood or finger-jointed Glulam wood. All door shutters in natural wood veneer. All bathroom windows, external utility fenestration in Aluminium frame	•	•	•
Mosquito Screens	Mosquito screens for all the External Windows and French Windows			•
Window Grills	No window grills permitted for the French Windows. Grills provided only for windows where there is a sheer drop. No grills for bathroom windows.	•	•	•
Hardware	All hardware in brush finished stainless steel. The main door with a night latch of Godrej or equivalent make.	•	•	•
	All other doors with door bolts and a mortise lock or tubular / cylindrical lock. All swing windows fitted with friction stays. Magnetic / concealed door stoppers for the Main door and Bed room doors.	•	•	•
<b>PAINT</b>				
Paint	No external paint over exposed brick or stone masonry. Cement based paint for other areas. Any steel railings etc. with a zinc-chromate primer and synthetic enamel paint.	•	•	•
	All internal paint in Acrylic Distemper.	•	•	•



The reference images showcase options for the specific products/finishes marked on the image.

# Specifications



GREEN  
BLUE  
PURPLE



## ELECTRO-DOMESTIC EQUIPMENT

<b>Central Vacuum</b>	Central vacuum system with vacuum points accessible from Living / Dining, Family, Bedrooms, Kitchen		
<b>Hob</b>	4-burner cooking hob in the Kitchen	•	•
<b>Chimney</b>	Ductable electric chimney with anodized Aluminium filters in the Kitchen	•	•
<b>Dishwasher</b>	Dishwasher of Siemens or equivalent make in the kitchen or wet kitchen	•	•
<b>Microwave</b>	Microwave of Siemens or equivalent make in the kitchen		•
<b>Oven</b>	Oven of Siemens or equivalent make in the kitchen		•
<b>Refrigerator</b>	Refrigerator in Kitchen		
<b>Water Purifier</b>	RO unit	•	•
<b>Heat Pump</b>	Centralized Heat Pump	•	•

## HOME AUTOMATION

<b>Console</b>	Two tablets with touch screens	•
<b>Security / Safety</b>	Bio-metric main door lock with additional control from main console and sub-phone	•
	Colour door camera with call bell facility outside the main door	•
	Surface mounted siren and auto dialler	•
	Panic buttons at entrance lobby and bathrooms to raise alarm in case of emergency	•
	Pet immune motion sensors at few locations for detecting intrusions	•
	Magnetic sensors in all windows, French windows and main door	•
	Glass break detectors in French Windows	•
	Gas leak detector and heat detector in the kitchen	•
<b>Entertainment</b>	Mood Lighting	•
<b>Green Controls</b>	Occupancy sensors in master bathroom, children's bathroom and guest bathrooms.	•

## CABINERY & FURNITURE

<b>Living &amp; Dining</b>	Console unit in dining area. No crockery unit.	•
<b>Kitchen</b>	Floor & wall mounted cabinets in Veneer finish	•

The reference images showcase options for the specific products/finishes marked on the image.

# Specifications



GREEN  
BLUE  
PURPLE

<b>Master Bedroom</b>	Double bed with bedside tables, 2 module wardrobes	•		
	Double bed with bedside tables, study unit, 2 module wardrobes		•	•
<b>Master Bathroom</b>	Mirror with backing ply and edge trim			•
	Shutters below the counter			•
<b>Children's Bedroom</b>	2 single beds, 2 module wardrobes	•		
	2 single beds, study unit, 2 module wardrobes			•
<b>Children's Bathroom</b>	Mirror with backing ply and edge trim			•
	Shutters below the counter			•
<b>Guest Bedroom</b>	Double bed with bedside tables, 1.5 module wardrobe		•	•
<b>Guest Bathroom</b>	Mirror with backing ply and edge trim			•
	<i>No cabinetry shall be provided in any other spaces</i>			
<b>Basic Materials</b>	All woodwork except for modular units in termite resistant good quality plywood or MDF panels in natural veneer or laminate. Modular units in particle board.		•	•
<b>Brand / Make</b>	All Woodwork, unless specifically mentioned otherwise, shall be made at our in-house production facility from our proprietary furniture design line.		•	•
<b>Hardware</b>	All hardware in brush finished stainless steel of Hettich or equivalent make		•	•
	Soft close system for the drawers in wardrobes			•
	Mattresses for beds			•
<b>HVAC</b>				
<b>Air-conditioning</b>	A hybrid central Air-conditioning system with blower units in the Bedrooms, Home-office, Family space and Living / Dining area of each apartment.		•	•
<b>Mechanical Ventilation</b>	Exhaust fan of GMC-Hitec or equivalent make in all bathrooms			•
<b>LANDSCAPING</b>				
<b>Soil</b>	Good quality red soil and sand mixture with manure as the base layer for landscaping	•	•	•
<b>Irrigation</b>	Sprinklers and a drip irrigation system for landscaped areas	•	•	•
<b>Soft Landscaping</b>	Landscaped garden areas. Expensive exotic plants provided only at additional cost.	•	•	•



## Notes

- 1 - All specifications above are subject to change & decisions taken from time to time by the Developers shall be final and binding.
- 2 - In the brands mentioned above, the Developers may use equivalent brands at their discretion.
- 3 - All specifications above shall be provided for the spaces in the default layout of the home, and do not apply to any changes to spaces or additional spaces created.

The reference images showcase options for the specific products/finishes marked on the image.





**Come, discover our homes.**

To book an exclusive tour of our Experience Homes call **+91 99000 78000** or mail us at **discover@total-environment.com**  
[www.total-environment.com](http://www.total-environment.com)

**Total**Environment  
Homes