



Element5

Overview Brochure

AI and RPA for post-acute care

Workflow automation and analytics solutions

Do more... by doing less

The Mission

Element5 is on a mission to help post-acute care organizations minimize the time spent on administrative processes by automating their workflows. With Element5, homecare and hospice teams can focus on what truly matters; better patient care.

"Element5's RPA-powered system created consistency of things being done when they're supposed to be done and how they're supposed to be done, allowing the team to spend their time on more rewarding and profitable work."

Stacey Bennett, Operations Manager, **Buckeye Home Health Care**

Built by experts with ***over a century of collective experience*** in post-acute care



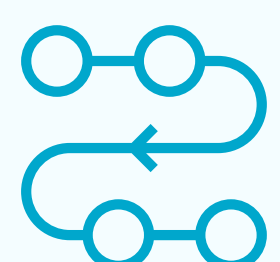
Intelligent process automation designed to complete repetitive tasks

Intelligent digital assistants, built and trained to rapidly manage tedious decision making processes. Automate processes that require hours of manual intervention but can be completed in minutes.



Easy and minimal setup with instantly tangible ROI

Simplifying how your organization works more efficiently shouldn't take a year or cost a million. Element5 works with you to set up your automation processes, and rapidly deliver your first tangible win.



Pre-built workflows, specifically designed to deliver value to post-acute care

Our bots are tailored for process automation in post acute care. Element5's expertise ensures that you can work closer with your patients while our automation workflows frees you up from operational pitfalls.



SaaS based monthly pricing based on your usage

We offer simple and transparent pricing. No licensing, custom development or maintenance costs. With Element5, you pay based on your usage, and we take care of the rest so we can help you see real value in automation.

A first of its kind automation as a service platform designed for post-acute care operations

MINIMAL EFFORT RPA

Element5 takes an end-to-end approach to RPA for you. Our deep domain expertise in healthcare operations ensures that we grasp your requirements accurately and ensure workflows can go live instantly.

SUPPORT COMPLIANCE NEEDS

Our packaged automation solutions fit in with your current processes helping you keep up with the constantly changing state and federal laws, without any hassle.

ALWAYS ON DIGITAL WORKFORCE

Element 5 s digital workflows never get sick, work 7 days a week, never leave you and can scale as your business grows with no additional effort. With our workflows, you can build the foundation you need for long term benefits of better cash flow and improved profit margins.

Intelligent automation across the post-acute care continuum

Element5 integrates with existing systems of records to perform tasks exactly how a resource in your organization would perform it. In short, Element5 functions like the teammate you can offload most of your administrative work to.

Some of the use cases Element5 can automate include.



INTAKE

- Referral portal to system of record
- Patient interoperability and admission
- Eligibility check to system of record
- Authorization management to system of record
- Intake Management Audit



CLINICAL

- Scheduling
- Quality Assurance
- Compliance Audit



MEDICAL RECORDS

- Vendor/Service integrations (example: telehealth, supplies, clearinghouse, CRM)
- Human Resources
- Census Migration
- Due Diligence Audits
- Orders/Physician Notifications



RCM

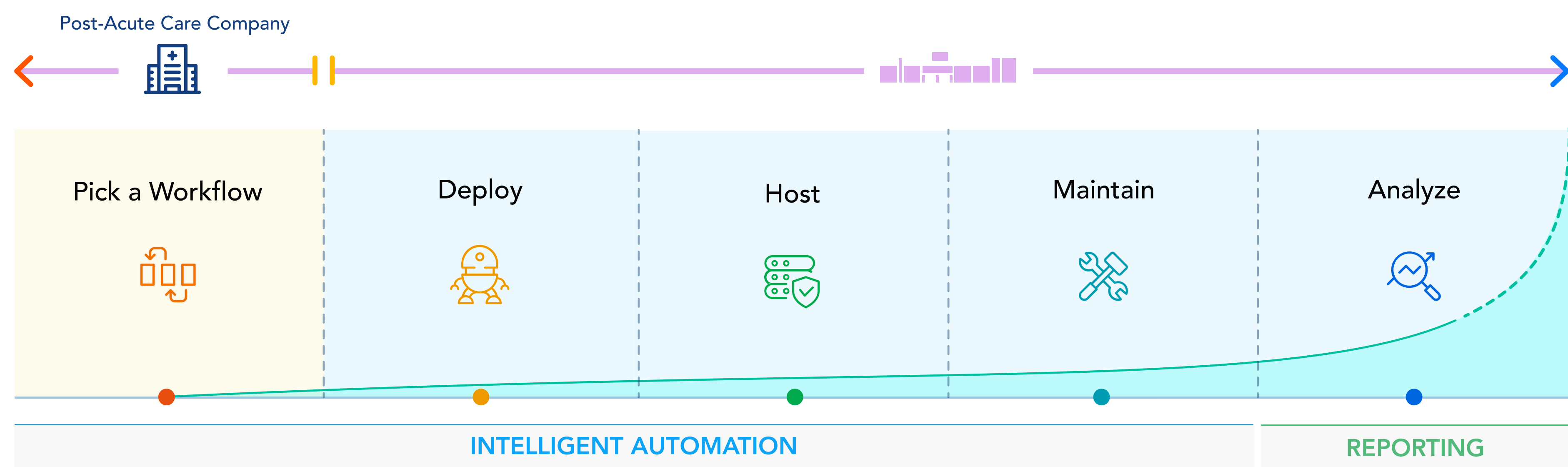
- Insurance re-verification
- Pre-Billing Audit
- Claim Management
- Denial Management
- Accounts Receivable
- Month End Processe



DATA AGGREGATION

- Reporting
- Analytics
- User Audit



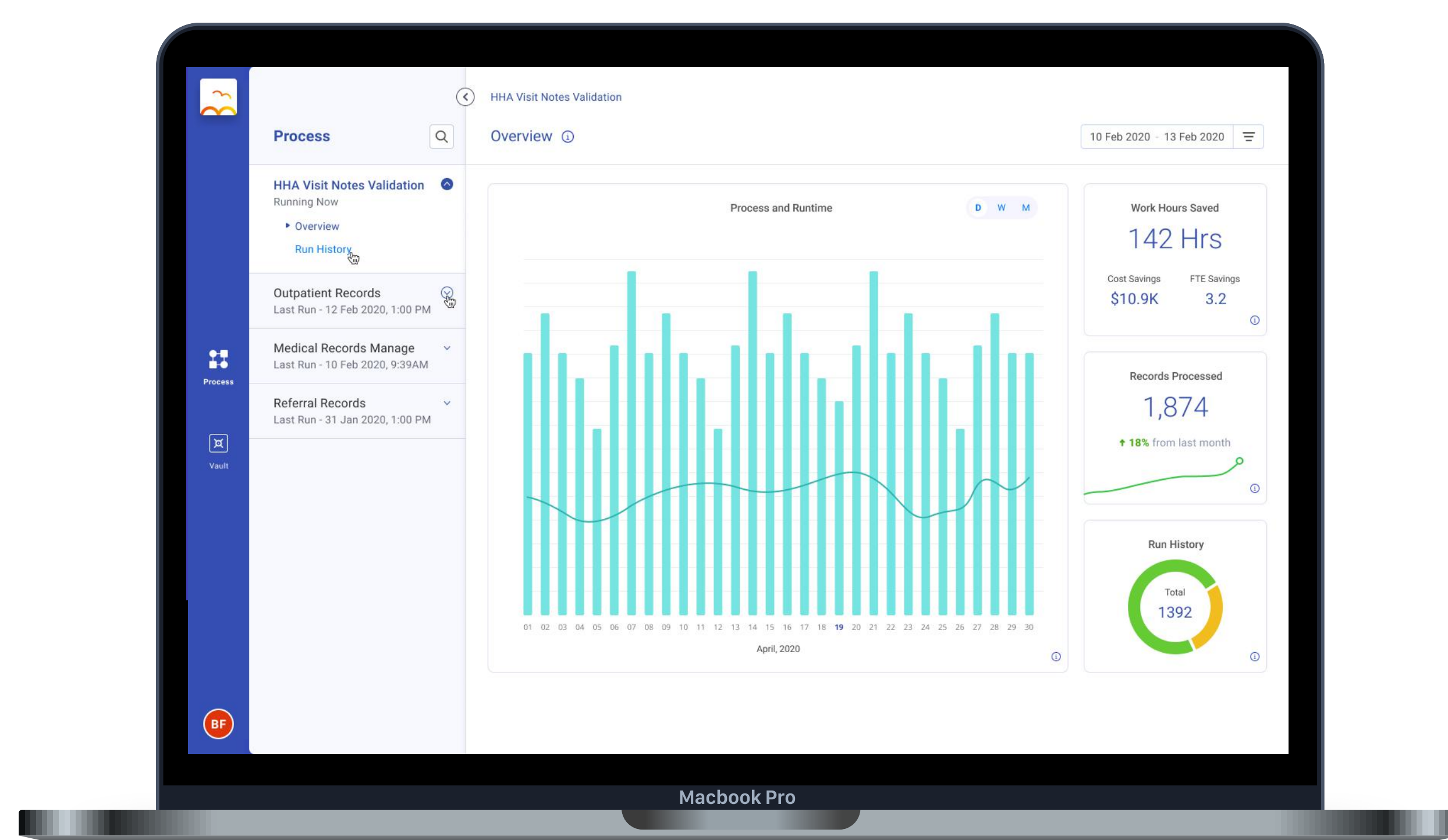


➔ *Scale-up productivity, margins, and revenue with minimal effort at your end*

Element5 provides intelligent automation solutions for post acute care. Using Artificial Intelligence (AI) and Robotic Process Automation (RPA), Element5 simplifies the execution of complex processes that incur high costs and are often labor intensive.

Element5 is on a mission to enable clinical and operational teams to focus on better care delivery, by freeing them from encumbrances of administrative tasks. Intelligent bots, pre-built workflows and interoperability with EHR systems enable faster delivery of repetitive processes while minimizing errors.

Built by experts with over a century of collective experience in healthcare and post acute care, Element5 is helping organizations do more, by doing less. Headquartered in San Jose, California with offices in Chennai, you can learn more about Element5 and RPA on www.e5.ai



As seen on

Seeking Alpha ^α

yahoo!

MarketWatch

BUSINESS
INSIDER

Hospice News

Home Health
Care News

element5

HQ at San Jose, California

www.e5.ai

Follow us on

