



REINVENT

CREATE INSPIRATION

GIVE YOUR INTERIORS CHARACTER



THE TOMETTE, A LONG HISTORY

Red hexagonal earthenware floor tiles, **tomettes** first appeared in Salernes in the Var region of France in the 1800s. Made from red clay sourced from local quarries, they were baked in wood-fired kilns to give them extra depth. Although **hard-wearing**, this flooring was often difficult to maintain.



NEW OUTLOOK

Giving the tomette a new lease of life. These tiles are eye-catching both because of their vintage look and their association with “authentic” spaces. Used to renovate homes, offices, and public spaces with personality, they give “character” to any kind of interior.

REINVENTING TRADITION

Tomette tiles for modern floors.

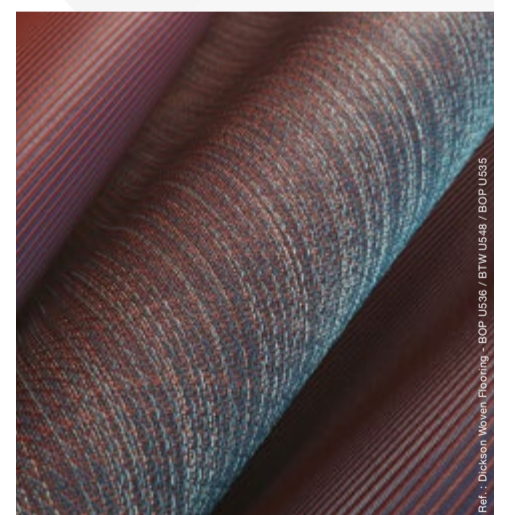
Dickson® has reinvented this traditional material to give it a resolutely designer look.

Larger than traditional tomette tiles, and embellished with textures and colors, the new tomette builds on its heritage to reveal its full decorative potential.

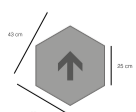
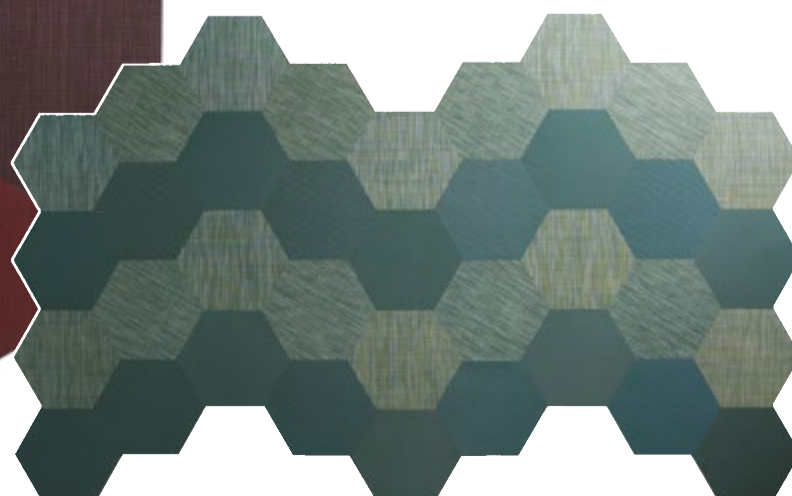
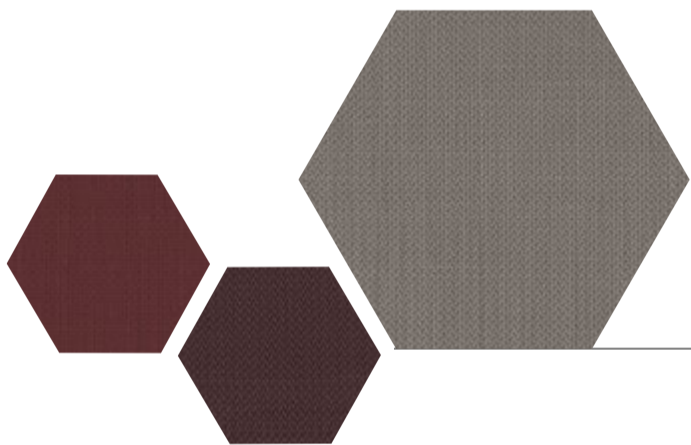
Whether monochrome, colored or textured, the hexagonal shape gives a modern and graphic look to any floor.

Assert your personality and invent your own definition of a “space with character”!

TEXTILE SENSATIONS: VINYL MAINTENANCE QUALITIES



A technical innovation developed for public spaces with extreme levels of wear, Dickson® floors combine the wear and maintenance qualities of vinyl flooring with the appearance and texture unique to textile floors. In other words - hard-wearing, comfortable, easy-maintenance designer flooring!



The hexagon shape is available in one dimension : 43x50x25