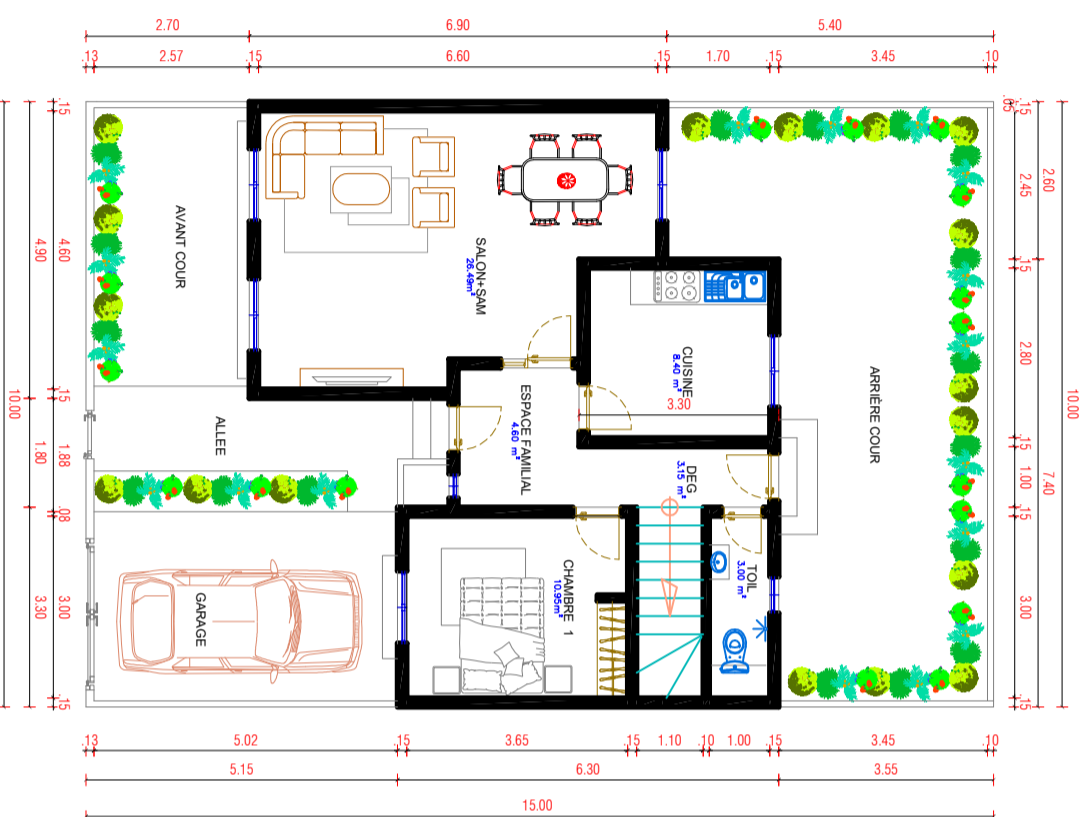


PROGRAMME " 25 000 LOGEMENTS "

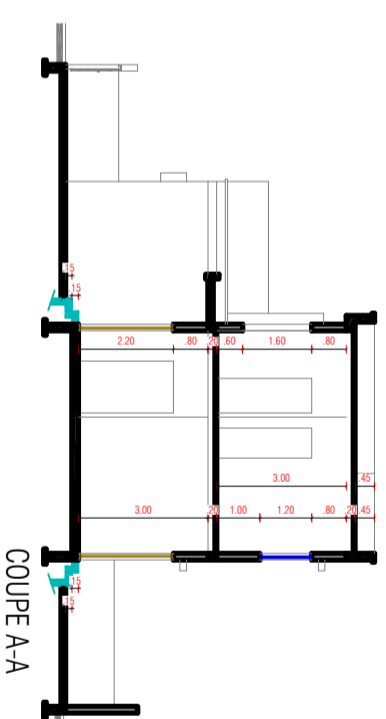
Tableau surfaces	
Surface terrain	150,00 m ²
Surface batie	68,68m ²
Surface utile	
Salon + SAM	26,49m ²
Chambre 1	10,95m ²
Cuisine	8,40m ²
Toilettes	3,00m ²
Espace familial	4,60m ²
Dégagement	3,15m ²
Total	56,59m²



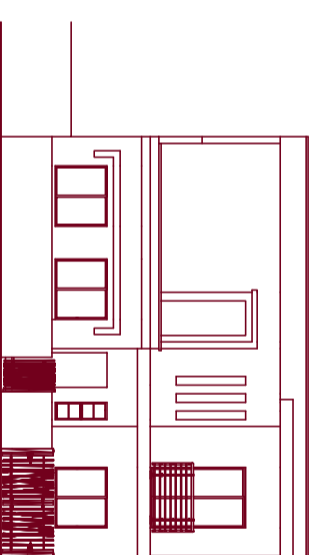
PLAN REZ DE CHAUSSEE

" TYPE F4 DUPLEX "

4 PIECES



PLAN ETAGE



FACADE CLOTURE

Tableau surfaces	
Surface terrain	150,00 m ²
Surface batie	71,21m ²
Surface utile	
Chambre 1	11,38m ²
Salle de bain	2,80m ²
Chambre 2	10,95m ²
Toilettes	3,92m ²
Espace familial	5,90m ²
Dégagement	3,88m ²
Terrasse accessible	14,49m ²
Total	53,31m²

