

TYPE A - BLOCK 36, 37, 38, 40 & 41 - 1st FLOOR TYPICAL AREA PLAN



TYPE A - BLOCK 36, 37, 38, 40 & 41 - 2nd to 12th FLOOR TYPICAL AREA PLAN



TYPE A - BLOCK 39 - 1ST FLOOR TYPICAL AREA PLAN



TYPE A - BLOCK 39 - 2nd FLOOR TYPICAL AREA PLAN

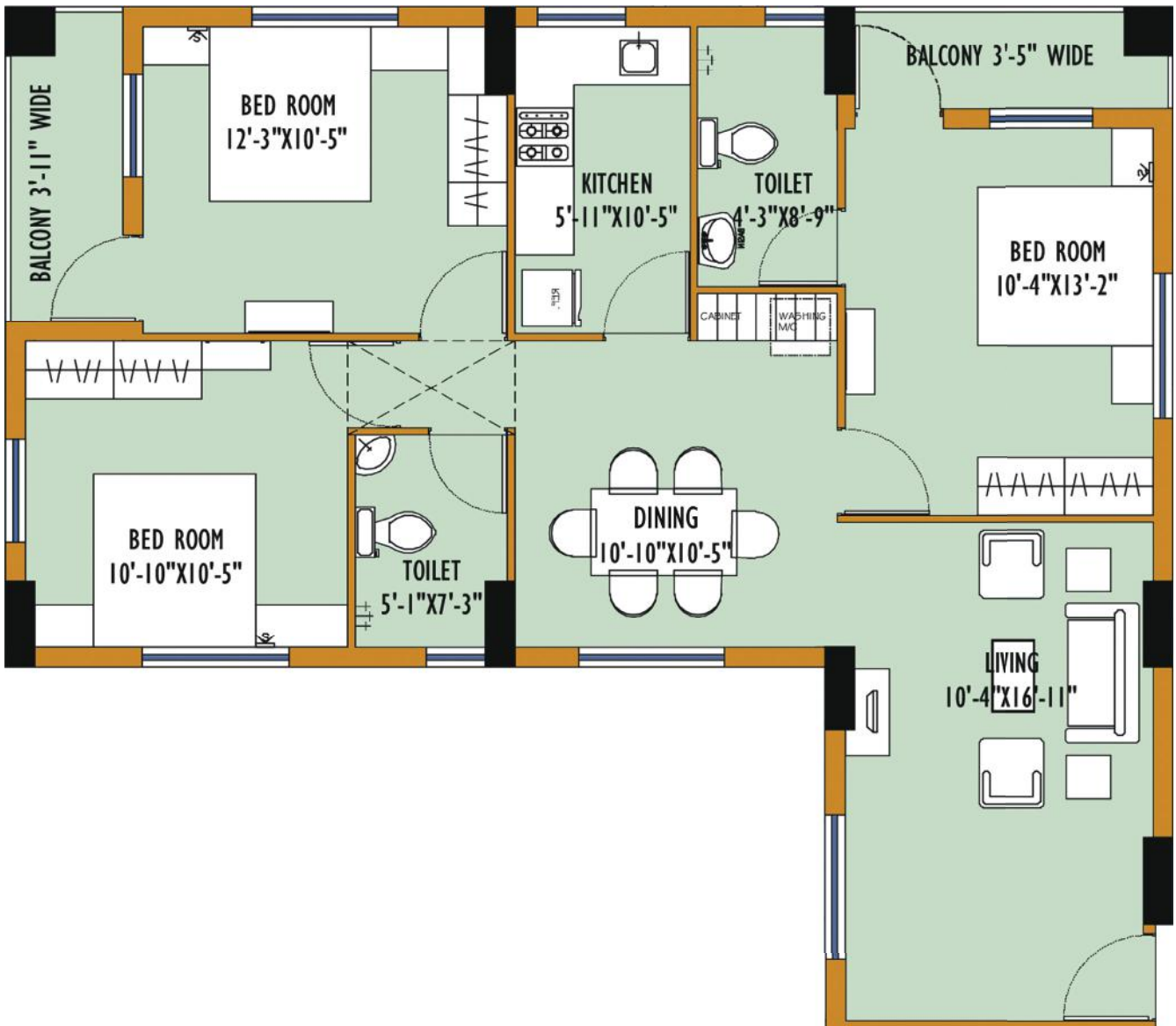


TYPE A - BLOCK 39 - 3rd to 12th FLOOR TYPICAL AREA PLAN



TYPE A - UNIT PLAN (FLAT A & C)

Flat Type	Flat Carpet Area (sq.ft)	Flat Built up Area(sq.ft)	Standard Built up Area(sq.ft)
3 BHK	827	1019	1323



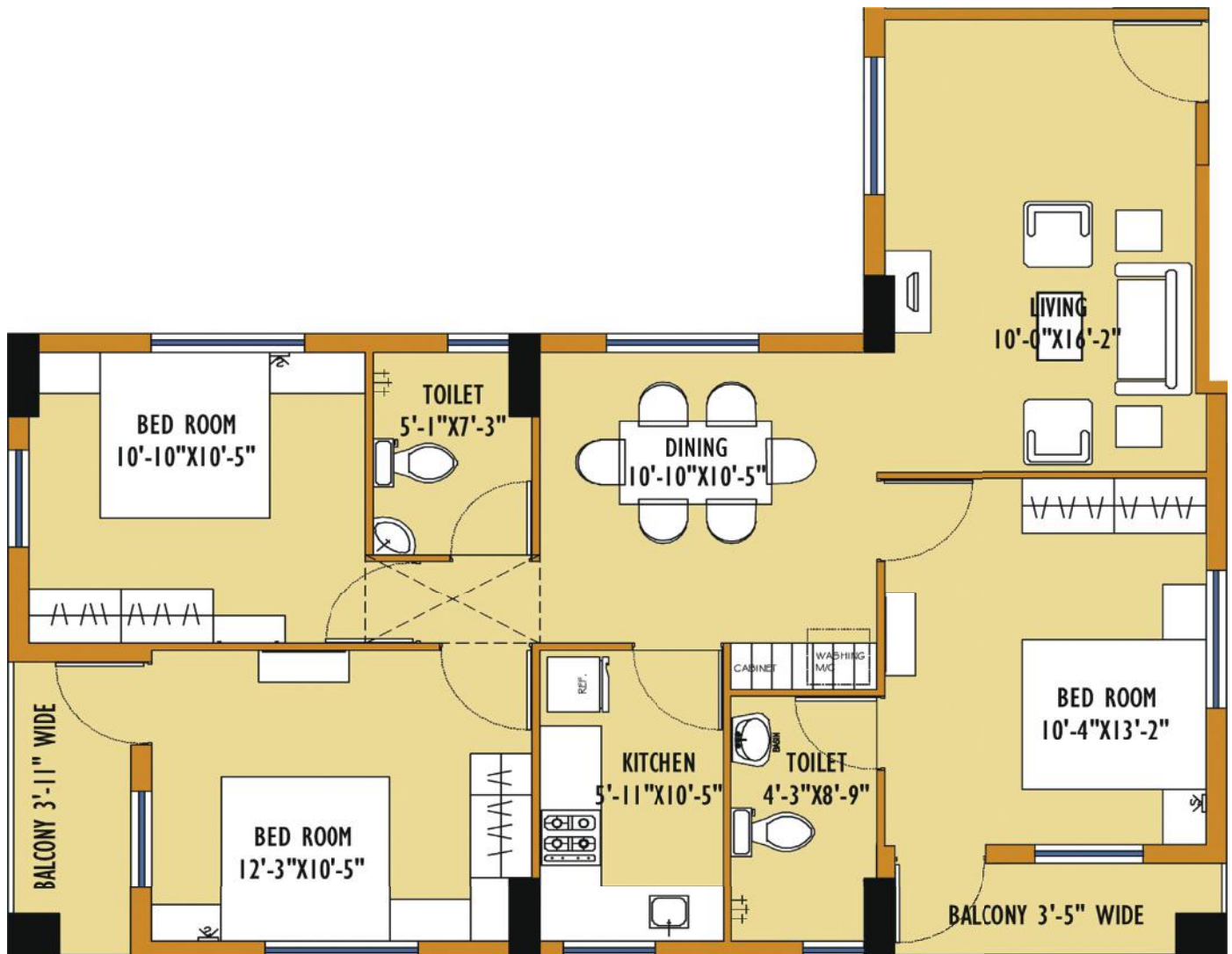
TYPE A - ISOMETRIC PLAN (FLAT A & C)

Flat Type	Flat Carpet Area (sq.ft)	Flat Built up Area(sq.ft)	Standard Built up Area(sq.ft)
3 BHK	827	1019	1323



TYPE A - UNIT PLAN (FLAT B & D)

Flat Type	Flat Carpet Area (sq.ft)	Flat Built up Area(sq.ft)	Standard Built up Area(sq.ft)
3 BHK	816	1006	1306



TYPE A - ISOMETRIC PLAN (FLAT B & D)

Flat Type	Flat Carpet Area (sq.ft)	Flat Built up Area(sq.ft)	Standard Built up Area(sq.ft)
3 BHK	816	1006	1306

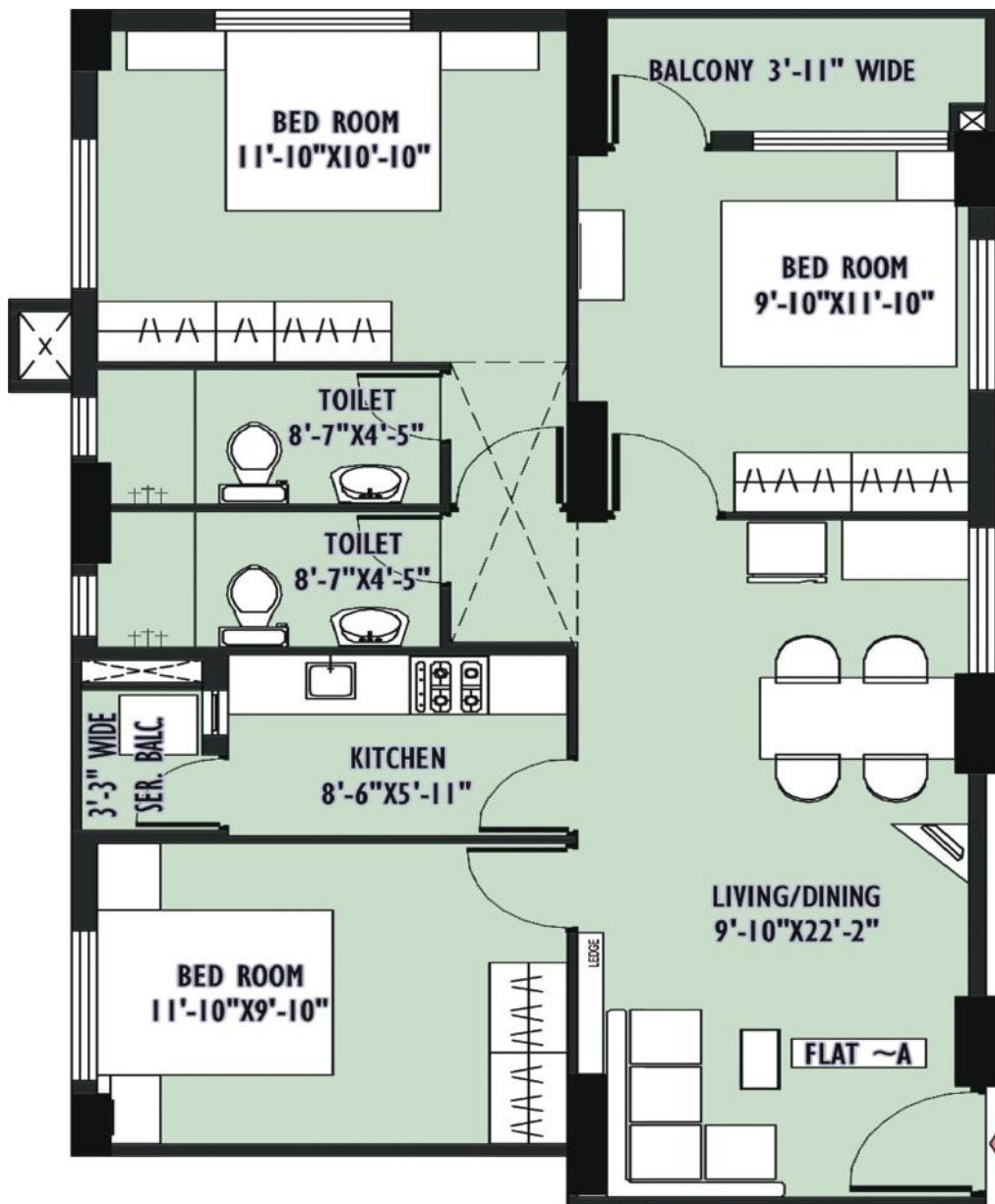


TYPE B - BLOCK 28 & 29 - 1ST TO 12TH FLOOR TYPICAL AREA



TYPE B - UNIT PLAN (FLAT A, D)

Flat Type	Flat Carpet Area (sq.ft)	Flat Built up Area(sq.ft)	Standard Built up Area(sq.ft)
3 BHK	731	880	1143



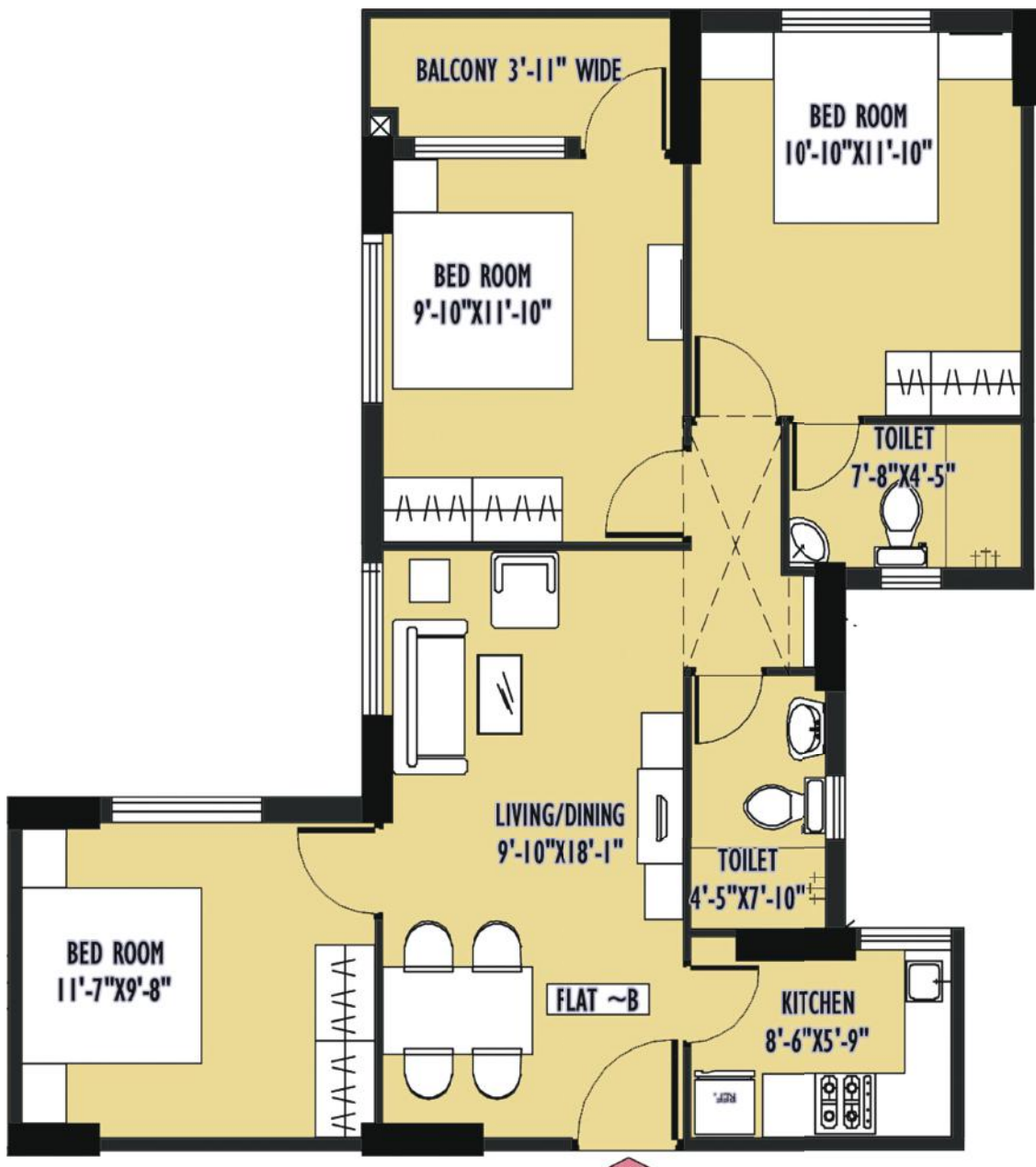
TYPE B - ISOMETRIC PLAN (FLAT A, D)

Flat Type	Flat Carpet Area (sq.ft)	Flat Built up Area(sq.ft)	Standard Built up Area(sq.ft)
3 BHK	731	880	1143



TYPE B - UNIT PLAN (FLAT B, C, F, G)

Flat Type	Flat Carpet Area (sq.ft)	Flat Built up Area(sq.ft)	Standard Built up Area(sq.ft)
3 BHK	676	813	1056



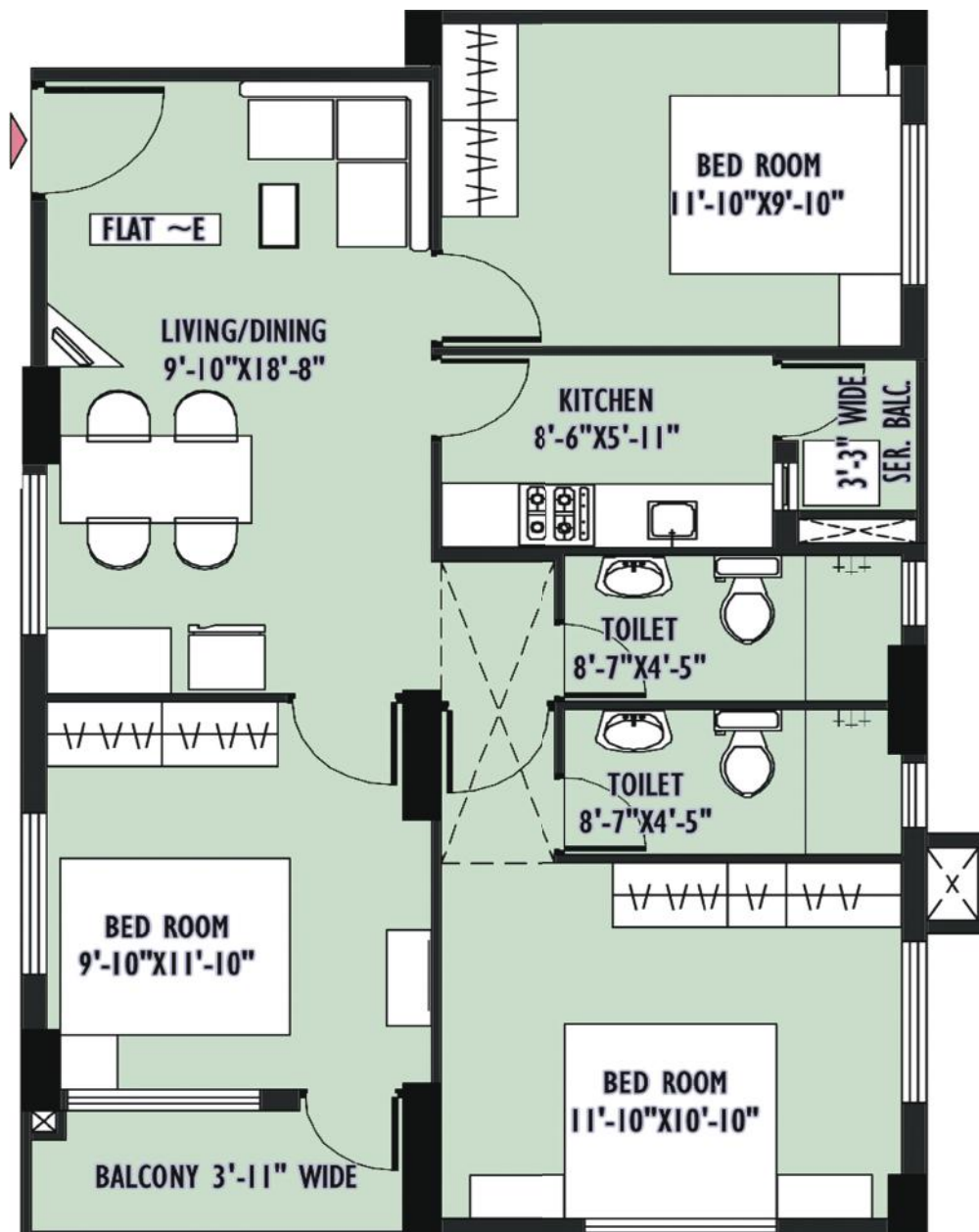
TYPE B - ISOMETRIC PLAN (FLAT B, C, F, G)

Flat Type	Flat Carpet Area (sq.ft)	Flat Built up Area(sq.ft)	Standard Built up Area(sq.ft)
3 BHK	676	813	1056



TYPE B - UNIT PLAN (FLAT E, H)

Flat Type	Flat Carpet Area (sq.ft)	Flat Built up Area(sq.ft)	Standard Built up Area(sq.ft)
3 BHK	701	845	1097



TYPE B - ISOMETRIC PLAN (FLAT E, H)

Flat Type	Flat Carpet Area (sq.ft)	Flat Built up Area(sq.ft)	Standard Built up Area(sq.ft)
3 BHK	701	845	1097

