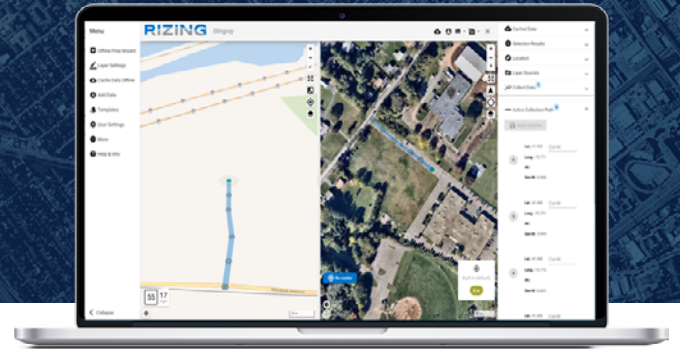


INNOVATIVE DATA INTEGRATION FOR DATA COLLECTION AND MAINTENANCE WORKFLOWS

Rizing's OmniSpatial product is an innovative progressive web application for field and office data collection and maintenance workflows. The application provides the ability work seamlessly with many published geospatial web services, including Esri map and feature services.

OmniSpatial provides asset location for not only traditional map points, lines, and polygon modeled assets, but also allows data to be collected on linearly referenced features using Esri's traditional linear referencing and Roads & Highways web services.



Data and System Integration

OmniSpatial provides the ability to bring numerous types of data together in one seamless user interface.

- Esri map and feature services
- Raster services (e.g., WMS, WFS, etc.)
- Vector tile services
- Non-spatial web services

Additionally, file-based data can be incorporated into field and office data maintenance workflows.

- Esri Shapefiles
- GeoJSON and JSON
- Google KML
- Formatted data (e.g., CSV file)

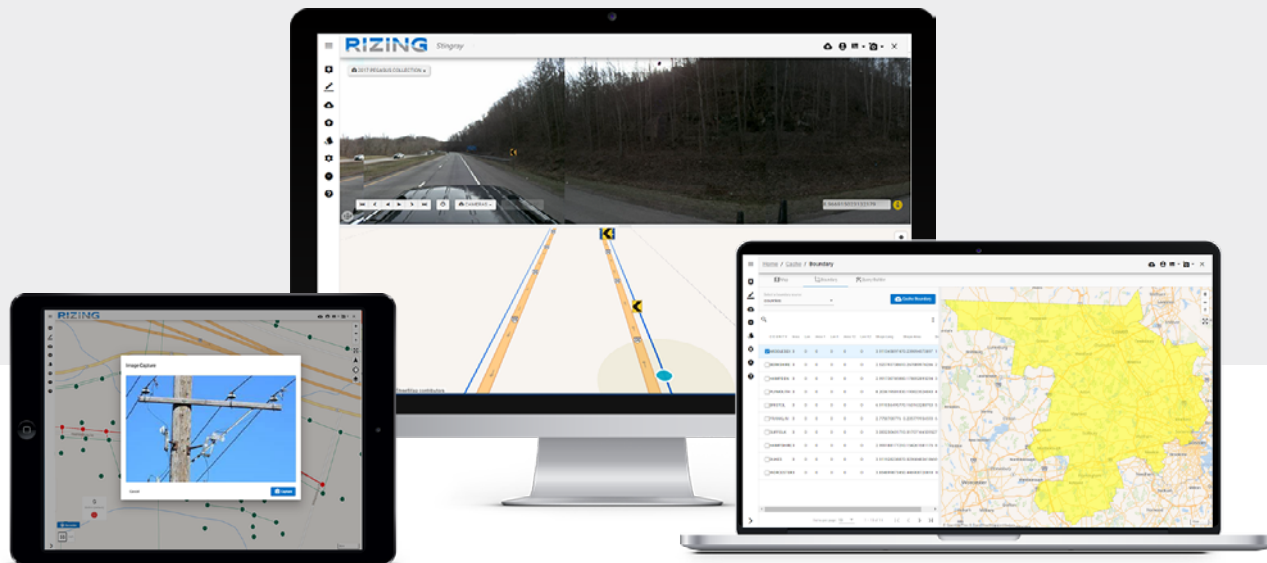
External system integrations can also be created through deep linked URLs using location or record identifiers.

Field and Office Data Maintenance

OmniSpatial provides the same user experience in the field and in the office. The progressive web application downloads automatically to the device when the URL is initiated. In field settings with limited network connectivity, this allows the application to function just like it would when connected to the internet.

Any needed data can be downloaded for disconnected field data collection. Once network connectivity is available again, the new or updated data can be synchronized to the source data systems using the web services provided by the vendor, such as the Esri feature services and Esri Roads & Highway services.

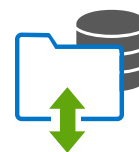
Key Features & Functionalities



Map (coordinate) and roadway (linear) data collection modes



Device agnostic solution that runs on any modern web browser



Integration of data from many published web services and data file formats



"Broom sweep" collection for obtaining multiple linear and point features in a single pass



Data preparation tools to guide users through downloading data for offline use



Photos, audio, note, and video collection capabilities to augment attribute data

Get the Actionable Insights You Need, Today



Ready to make your data work for you? Visit rizing.com or email geospatial@rizing.com for more information or a solution overview.

rizing.com
geospatial@rizing.com

Copyright © 2021 Rizing LLC or a Rizing LLC affiliate company. All rights reserved. This document is provided for information purposes only, and the contents are subject to change without notice. This document is not warranted to be error-free, nor subject to any other warranties or conditions, whether expressed orally or implied in law, including implied warranties and conditions of merchantability or fitness for a particular purpose. We specifically disclaim any liability with respect to this document, and no contractual obligations are formed either directly or indirectly by this document. This document may not be reproduced or transmitted in any form or by any means, electronic or mechanical, for any purpose, without our prior written permission.

All other trademarks referenced herein are the property of their respective owners.



RIZING