

3D BOOTH MAP GUIDE

EasyVirtualFair



3D BOOTH MAPS

Maps are created in 3D so we cannot update them easily. For this reason they are made only one week before the event starts, so the final number of exhibitors is closed.

In this document you can see some examples of our 3D maps.

Take into consideration that this is a fully customized feature so the number of booths, sizes, positions etc..are editable.

Maps are created in 3D so we cannot update them easily. Because of this they are made only one week before the event starts, when the final number of exhibitors is closed.

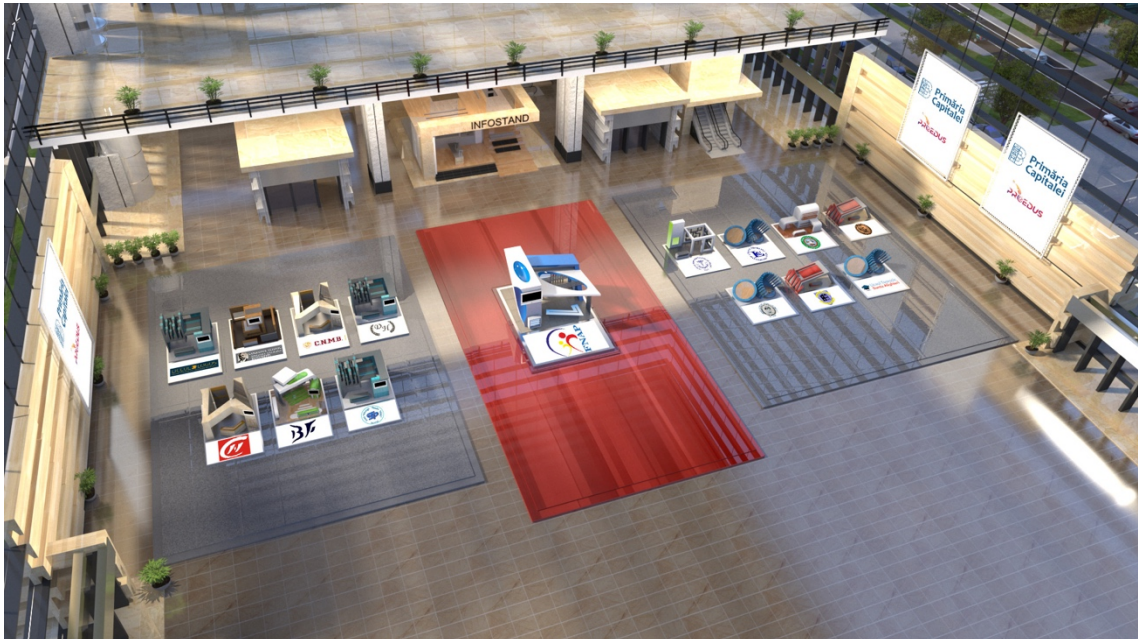
Some maps also include billboards, these are for your sponsors, corporate images etc.. and all of them can be clickable.

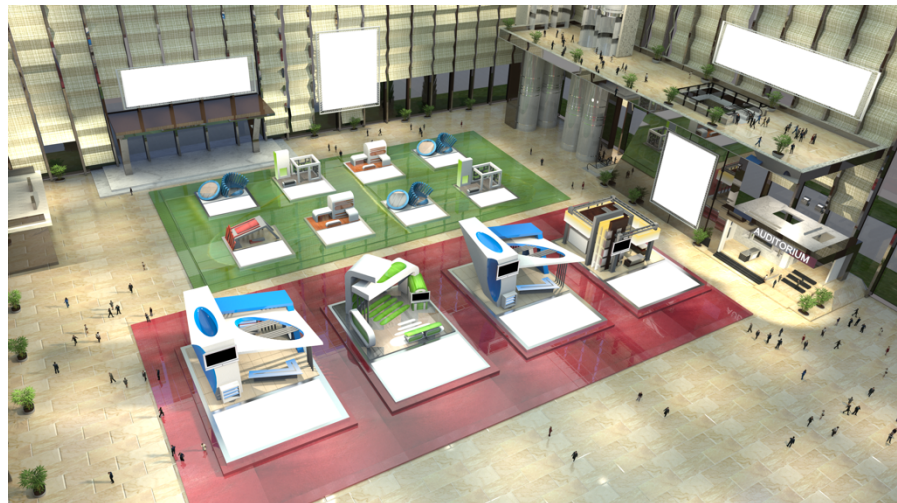
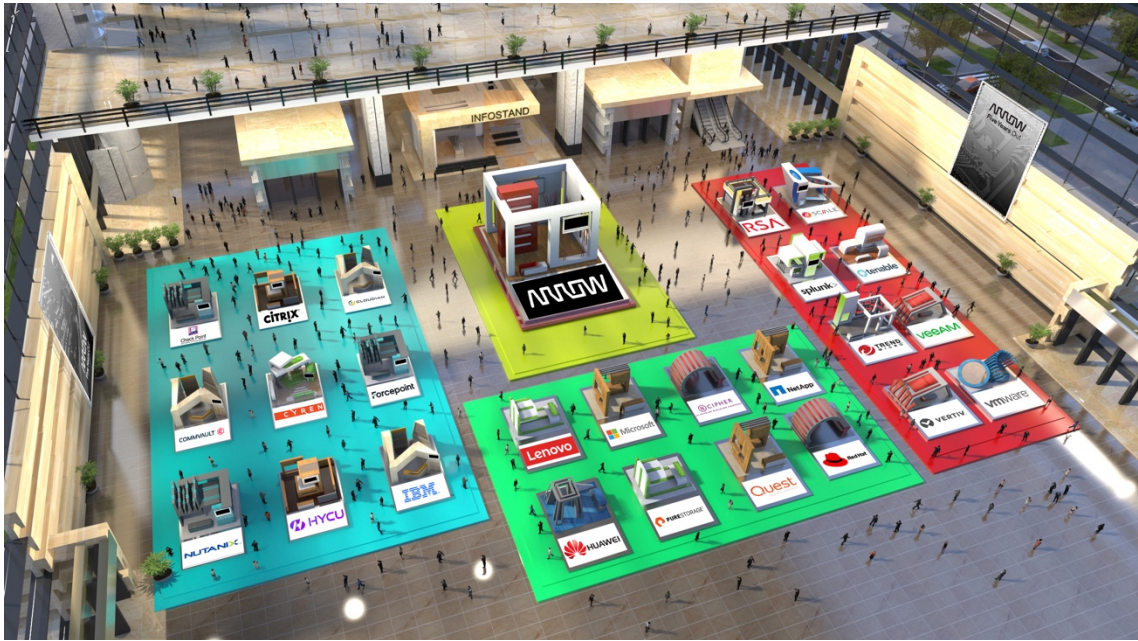
Some things to consider about booths:

- We will need the logo of each exhibitor from you before we can build the map
- This is an option for one-time events and has an additional charge











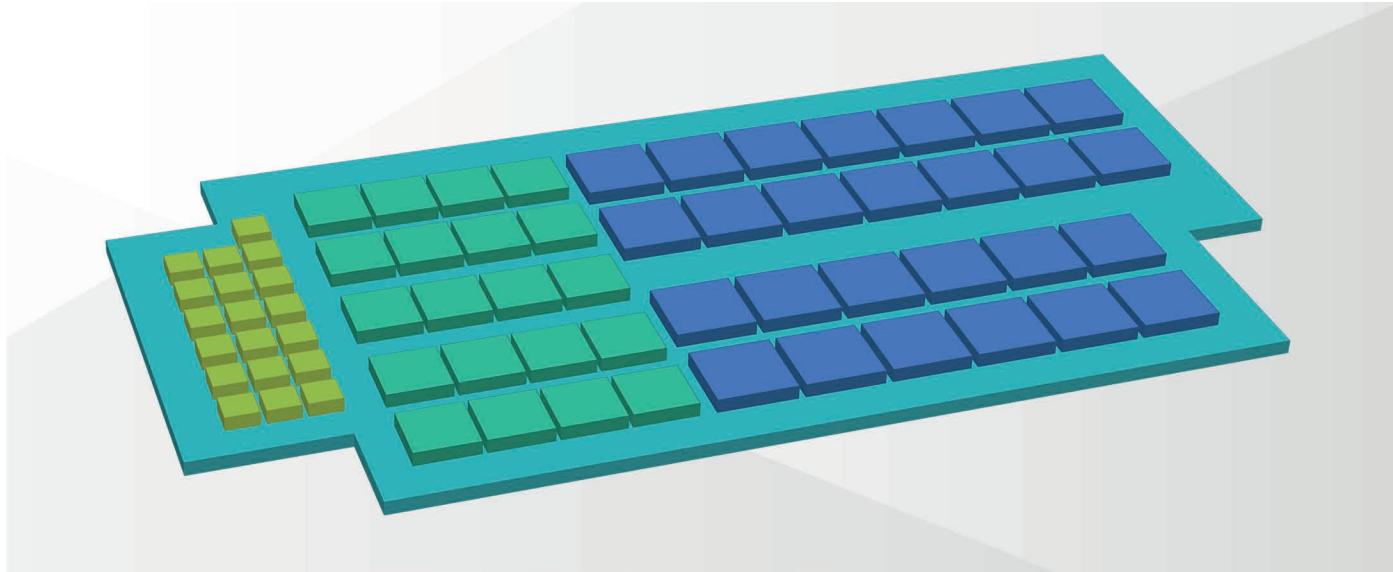


2D Pavilions

*These images are just templates,
final maps would be fully customised*

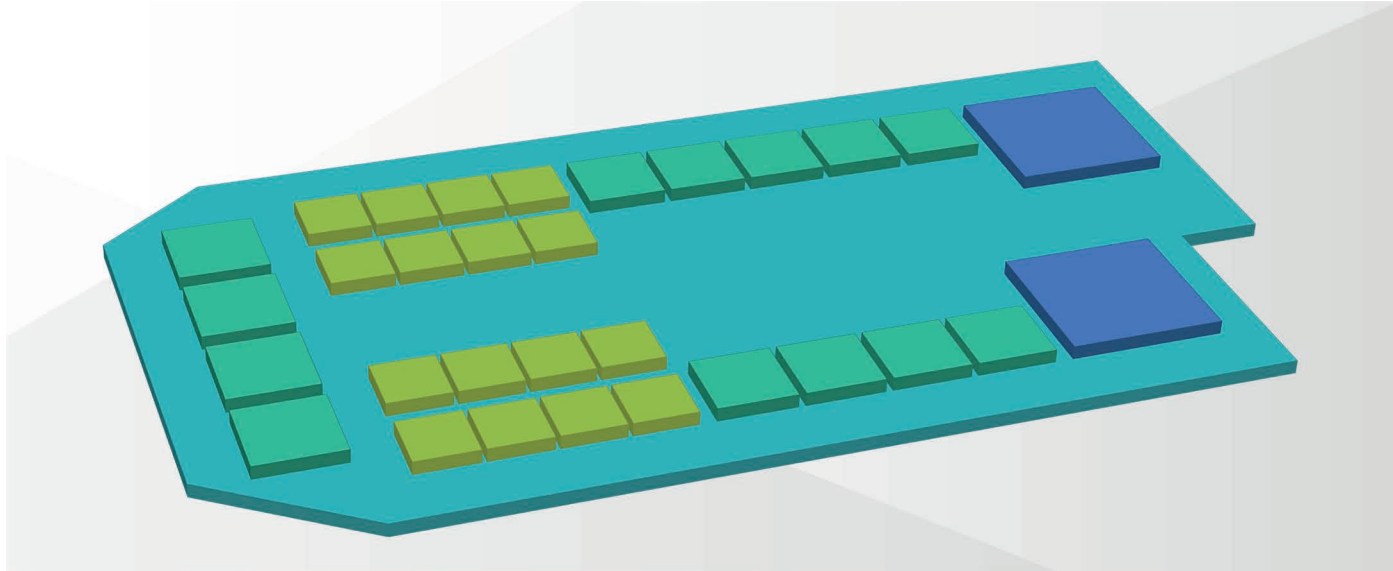
Pavilion 01

65 stands



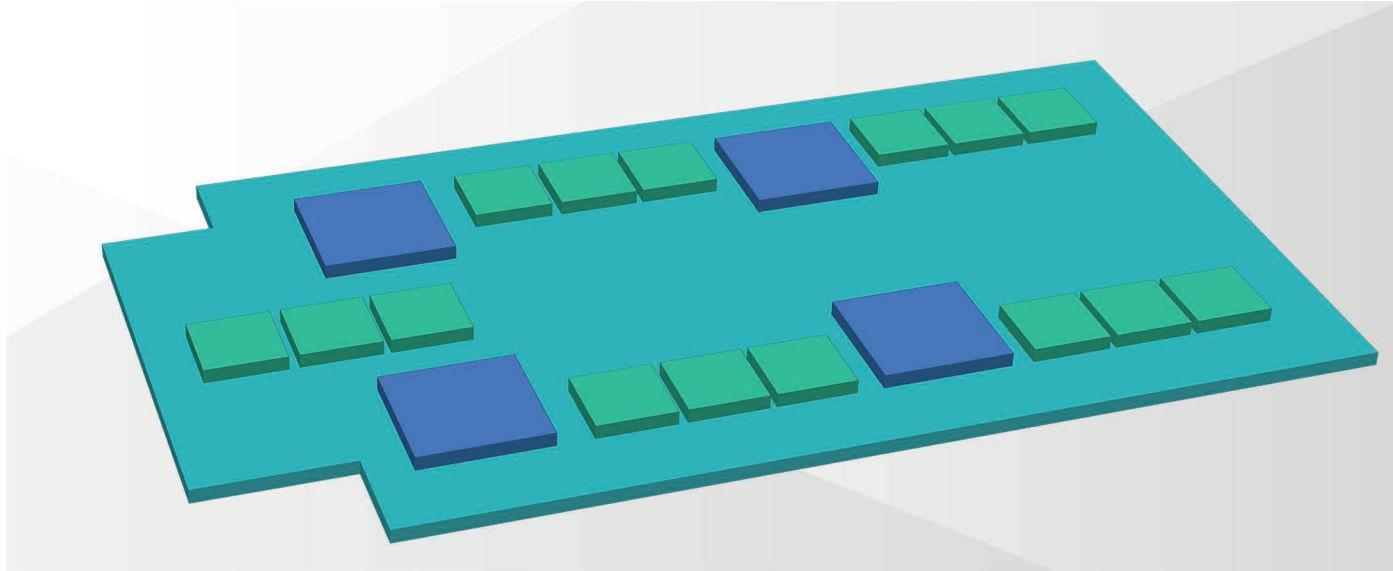
Pavilion 02

31 stands



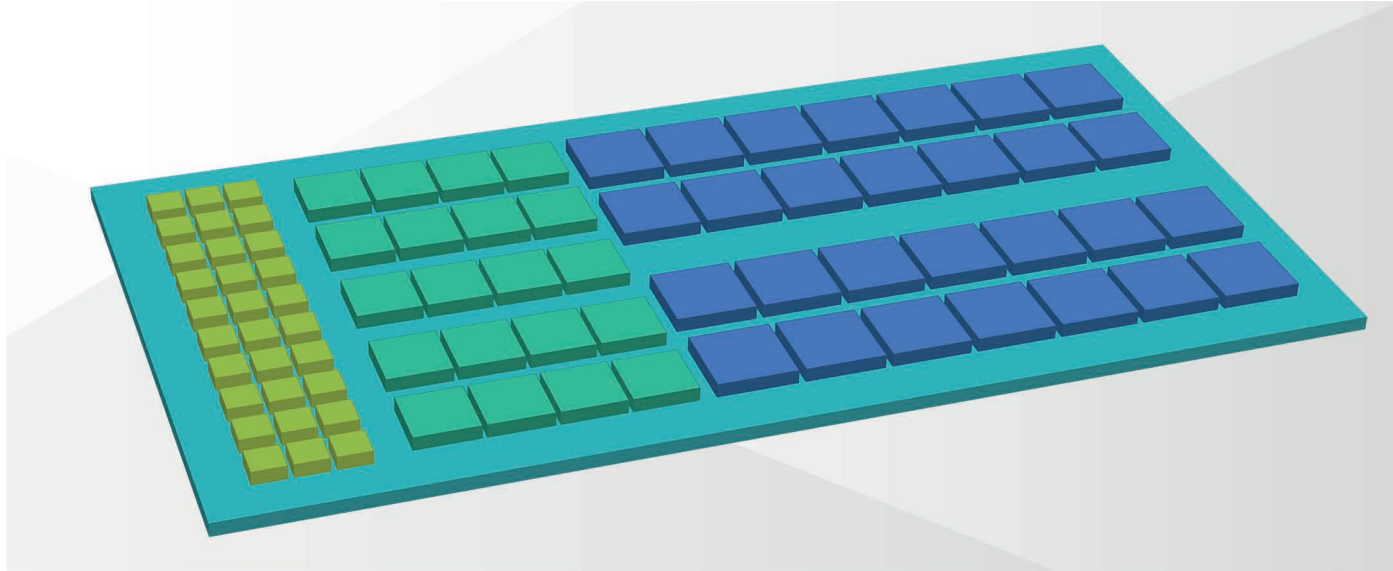
Pavilion 03

19 stands



Pavilion 04

78 stands



Pavilion 05

38 stands

