



SLS

DUBAI
RESIDENCES

Redefining the *living experience*

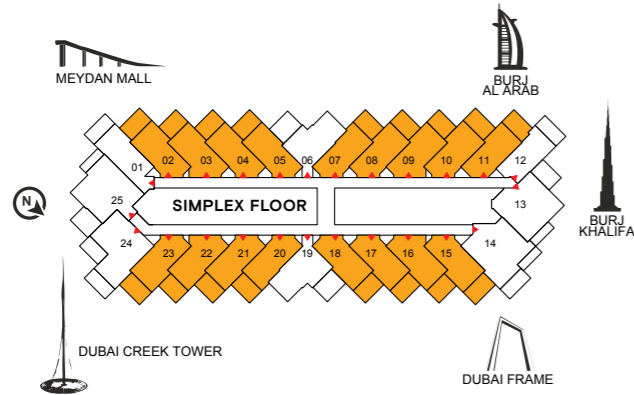
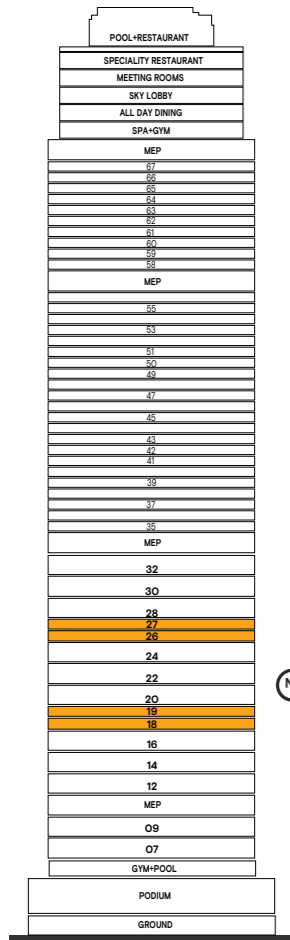
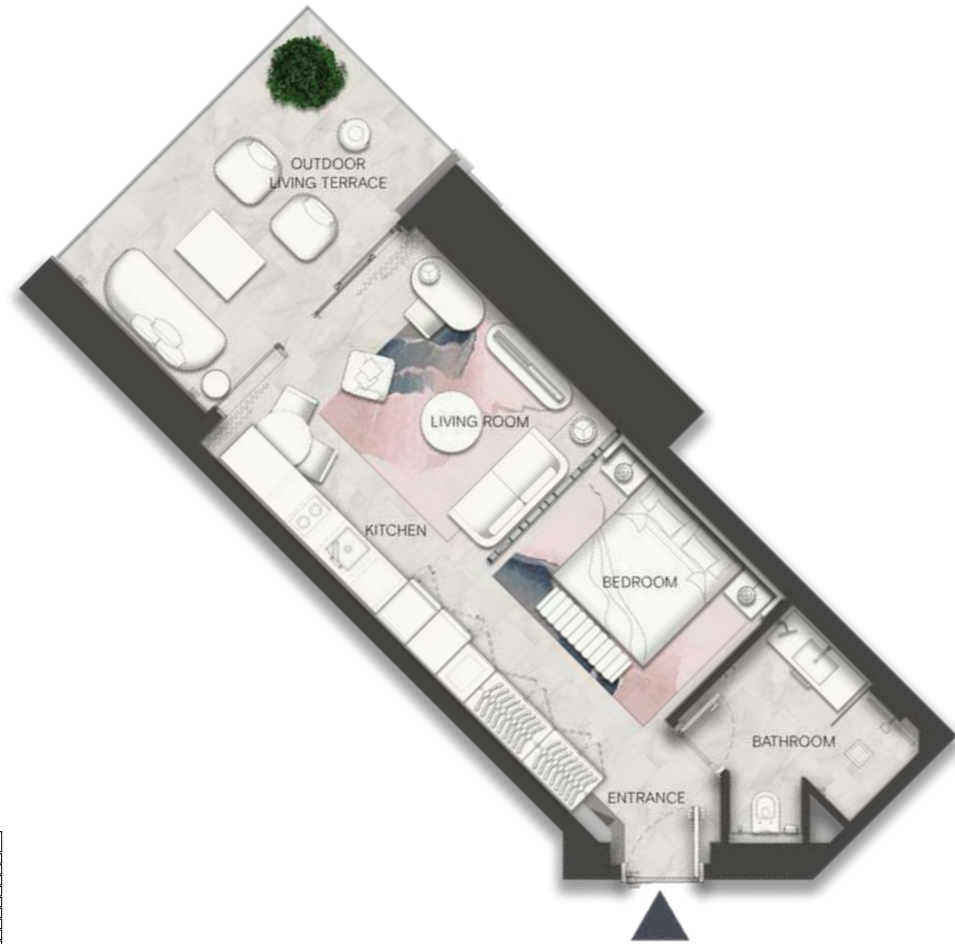
FLOOR PLANS

sbe

SLS DUBAI RESIDENCES

WHERE
YOUR MOST
IMAGINATIVE
SELF COMES
TO LIFE

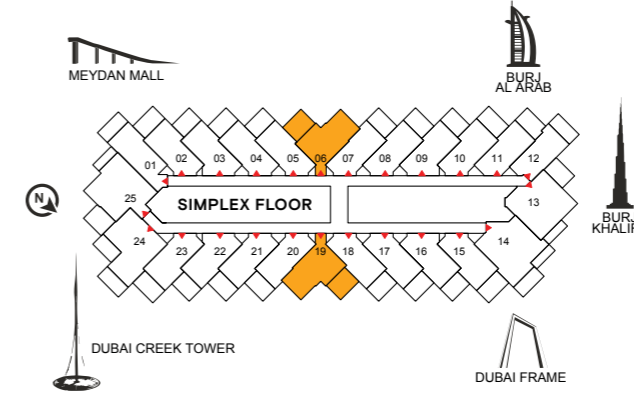
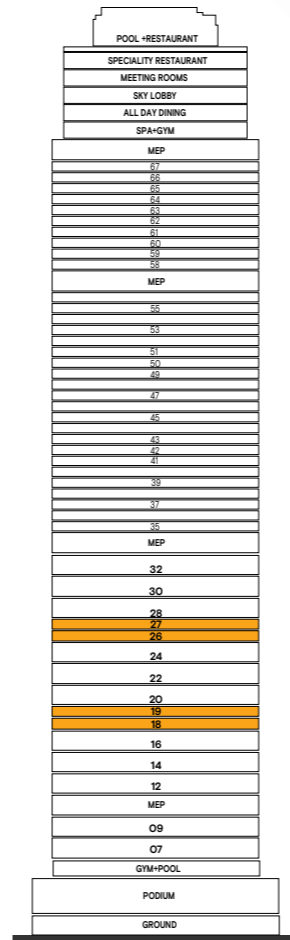
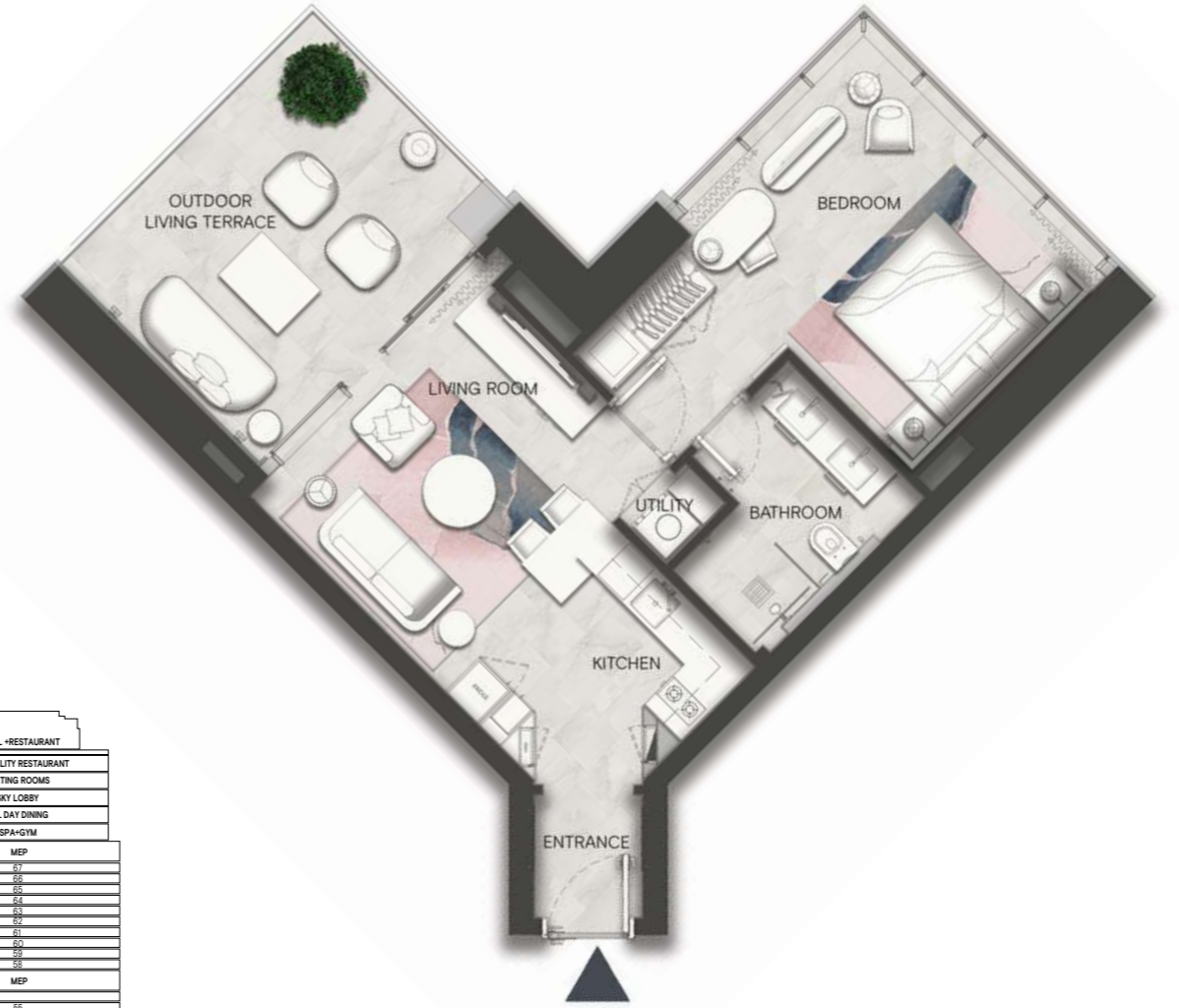




SIMPLEX FLOORS			
18th	19th	26th	27th

	M ²	Sqft
INDOOR AREA	48.95	527
OUTDOOR AREA	15.87	171
UNIT TOTAL AREA	64.82	698

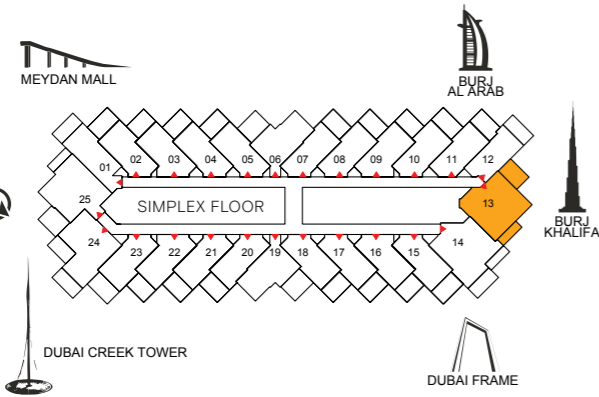
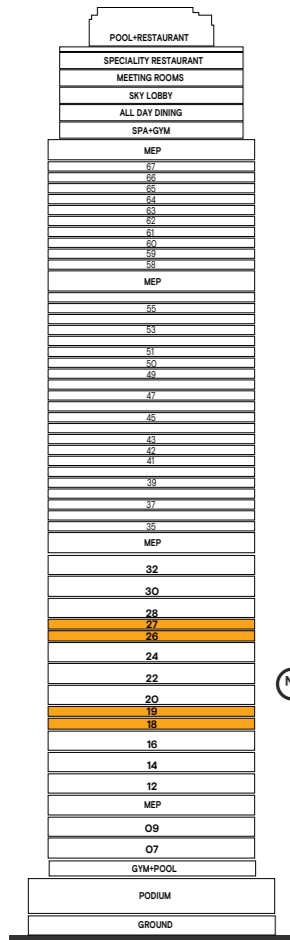
The contents of this SLS Dubai Residences floor plans brochure are for illustrative purposes only. The designs, facilities, amenities, numbering and layout of the units in the Project are not final and may be subject to change. Neither W O W Real Estate Development nor sbe Group (or their respective agents, consultants, affiliates or employees), warrants or assumes any legal liability or responsibility in any way for the accuracy, completeness, or usefulness of any information or illustrations contained within this floor plans brochure. The Developer is owned and operated independently to the brand operator and is solely responsible for the development of the Project. The "SLS" brand name and trade-marks are used under licence.



SIMPLEX FLOORS			
18th	19th	26th	27th

	M ²	Sqft
INDOOR AREA	58.26	627
OUTDOOR AREA	16.82	181
UNIT TOTAL AREA	75.08	808

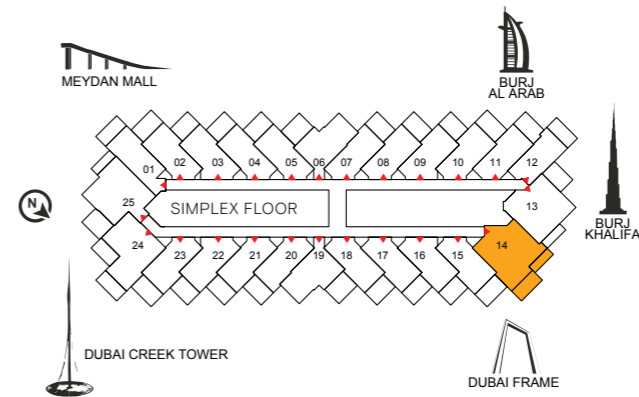
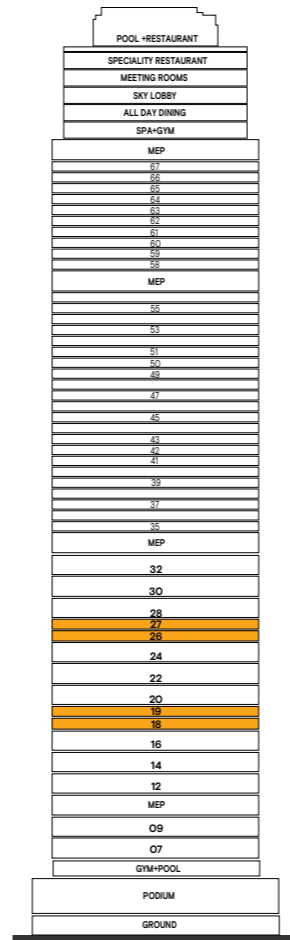
The contents of this SLS Dubai Residences floor plans brochure are for illustrative purposes only. The designs, facilities, amenities, numbering and layout of the units in the Project are not final and may be subject to change. Neither W O W Real Estate Development nor sbe Group (or their respective agents, consultants, affiliates or employees), warrants or assumes any legal liability or responsibility in any way for the accuracy, completeness, or usefulness of any information or illustrations contained within this floor plans brochure. The Developer is owned and operated independently to the brand operator and is solely responsible for the development of the Project. The "SLS" brand name and trade-marks are used under licence.



SIMPLEX FLOORS			
18th	19th	26th	27th

	M ²	Sqft
INDOOR AREA	80.37	865
OUTDOOR AREA	20.79	224
UNIT TOTAL AREA	101.16	1,089

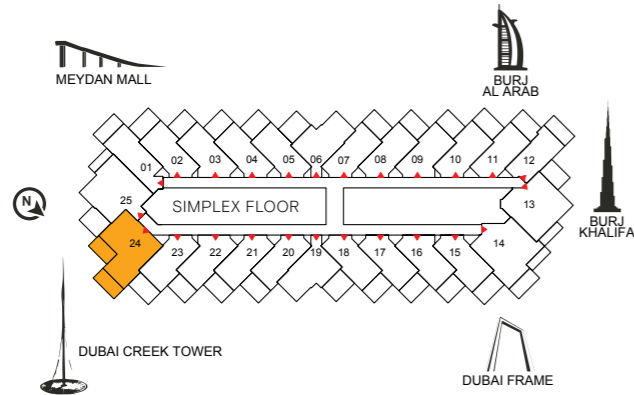
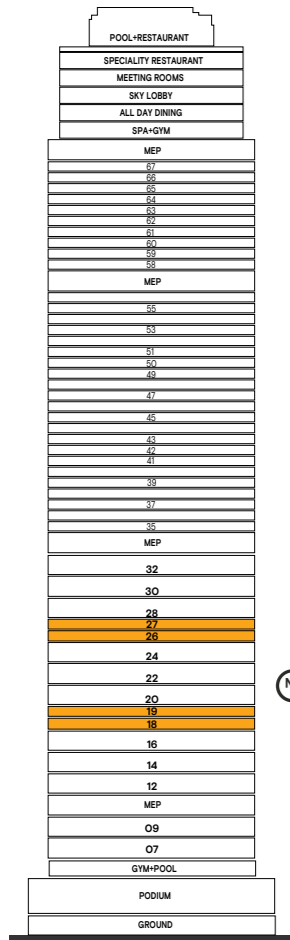
The contents of this SLS Dubai Residences floor plans brochure are for illustrative purposes only. The designs, facilities, amenities, numbering and layout of the units in the Project are not final and may be subject to change. Neither W O W Real Estate Development nor sbe Group (or their respective agents, consultants, affiliates or employees), warrants or assumes any legal liability or responsibility in any way for the accuracy, completeness, or usefulness of any information or illustrations contained within this floor plans brochure. The Developer is owned and operated independently to the brand operator and is solely responsible for the development of the Project. The "SLS" brand name and trade-marks are used under licence.



SIMPLEX FLOORS			
18th	19th	26th	27th

	M ²	Sqft
INDOOR AREA	82.67	890
OUTDOOR AREA	19.51	210
UNIT TOTAL AREA	102.18	1,100

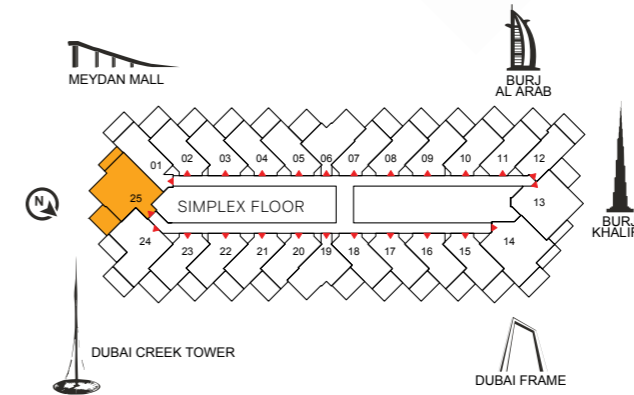
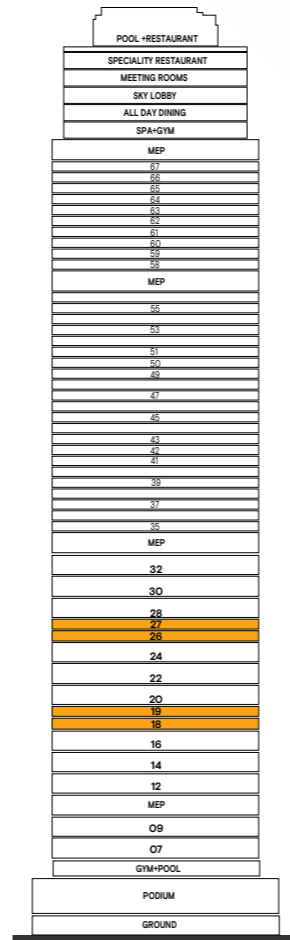
The contents of this SLS Dubai Residences floor plans brochure are for illustrative purposes only. The designs, facilities, amenities, numbering and layout of the units in the Project are not final and may be subject to change. Neither W O W Real Estate Development nor sbe Group (or their respective agents, consultants, affiliates or employees), warrants or assumes any legal liability or responsibility in any way for the accuracy, completeness, or usefulness of any information or illustrations contained within this floor plans brochure. The Developer is owned and operated independently to the brand operator and is solely responsible for the development of the Project. The "SLS" brand name and trade-marks are used under licence.



SIMPLEX FLOORS			
18th	19th	26th	27th

	M ²	Sqft
INDOOR AREA	76.21	820
OUTDOOR AREA	24.22	261
UNIT TOTAL AREA	100.43	1,081

The contents of this SLS Dubai Residences floor plans brochure are for illustrative purposes only. The designs, facilities, amenities, numbering and layout of the units in the Project are not final and may be subject to change. Neither W O W Real Estate Development nor sbe Group (or their respective agents, consultants, affiliates or employees), warrants or assumes any legal liability or responsibility in any way for the accuracy, completeness, or usefulness of any information or illustrations contained within this floor plans brochure. The Developer is owned and operated independently to the brand operator and is solely responsible for the development of the Project. The "SLS" brand name and trade-marks are used under licence.



SIMPLEX FLOORS			
18th	19th	26th	27th

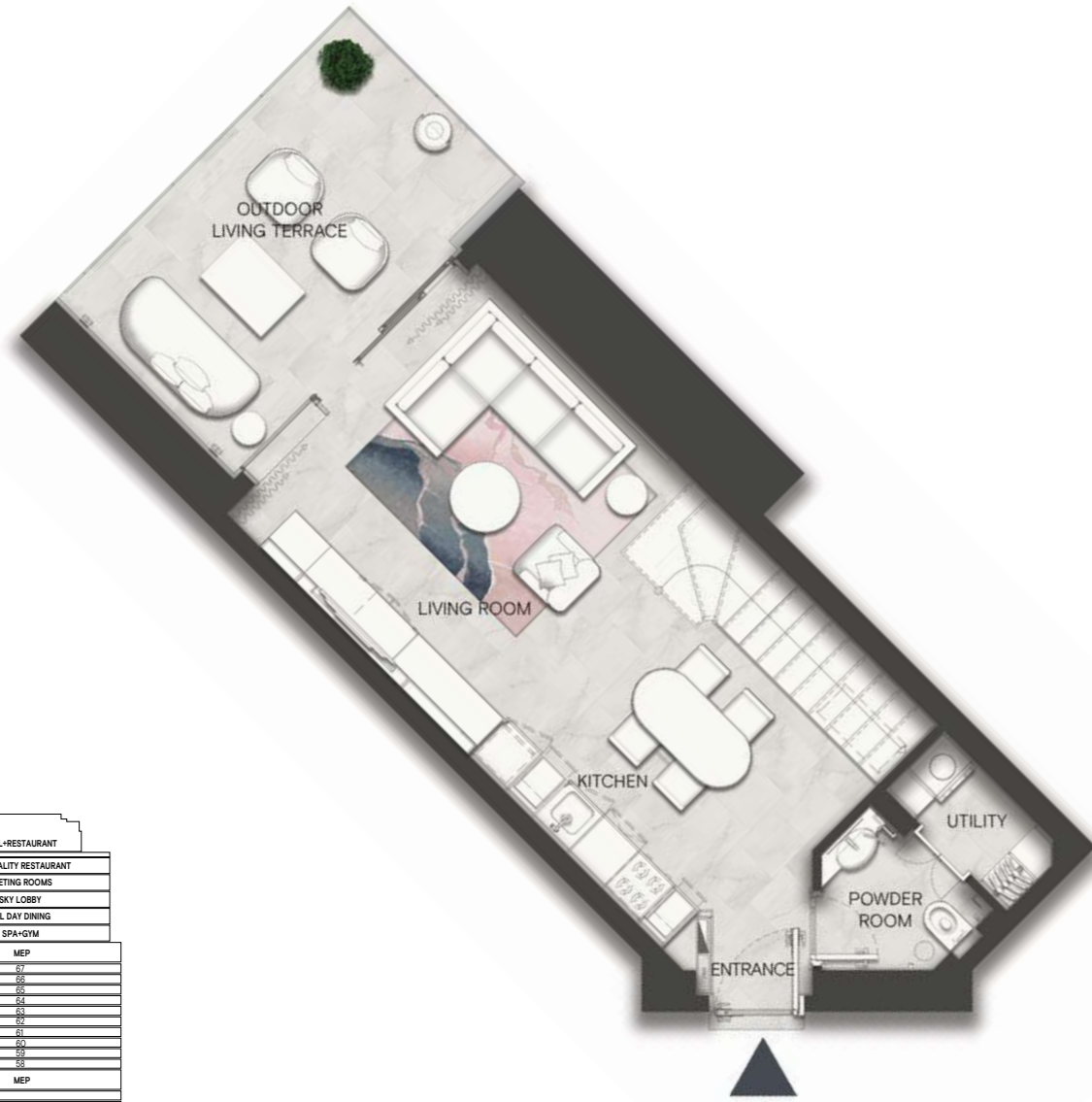
	M ²	Sqft
INDOOR AREA	82.32	886
OUTDOOR AREA	22.14	238
UNIT TOTAL AREA	104.46	1,124

The contents of this SLS Dubai Residences floor plans brochure are for illustrative purposes only. The designs, facilities, amenities, numbering and layout of the units in the Project are not final and may be subject to change. Neither W O W Real Estate Development nor sbe Group (or their respective agents, consultants, affiliates or employees), warrants or assumes any legal liability or responsibility in any way for the accuracy, completeness, or usefulness of any information or illustrations contained within this floor plans brochure. The Developer is owned and operated independently to the brand operator and is solely responsible for the development of the Project. The "SLS" brand name and trade-marks are used under licence.



SLS DUBAI RESIDENCES - ONE BEDROOM LOFT

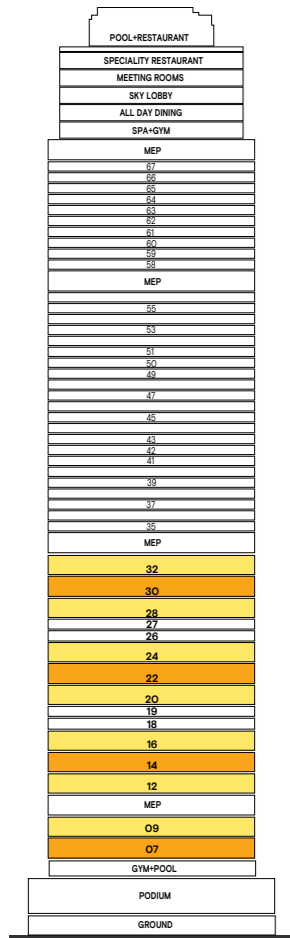
ONE BEDROOM LOFT TYPE A



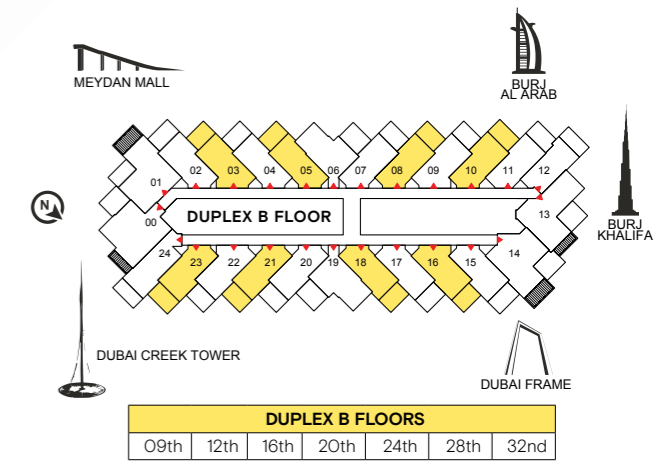
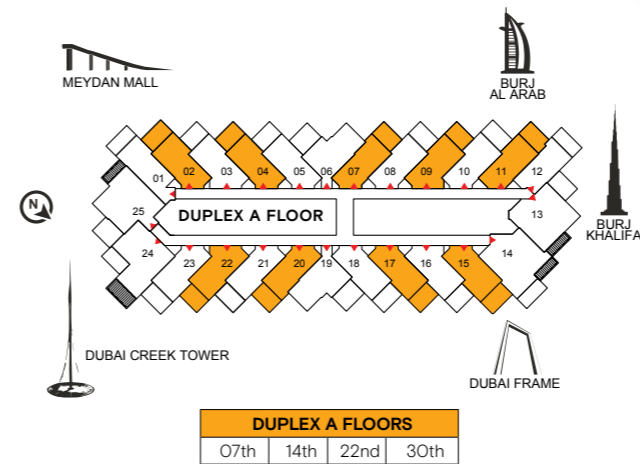
LOWER LEVEL FLOOR PLAN



UPPER LEVEL FLOOR PLAN



	M ²	Sqft
LOWER LEVEL INDOOR AREA	48.95	527
LOWER LEVEL OUTDOOR AREA	15.87	171
UPPER LEVEL INDOOR AREA	43.20	465
UNIT TOTAL AREA	108.02	1,163



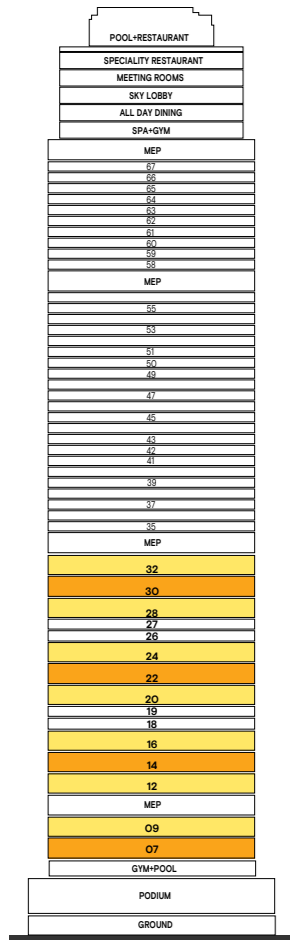
ONE BEDROOM LOFT TYPE B



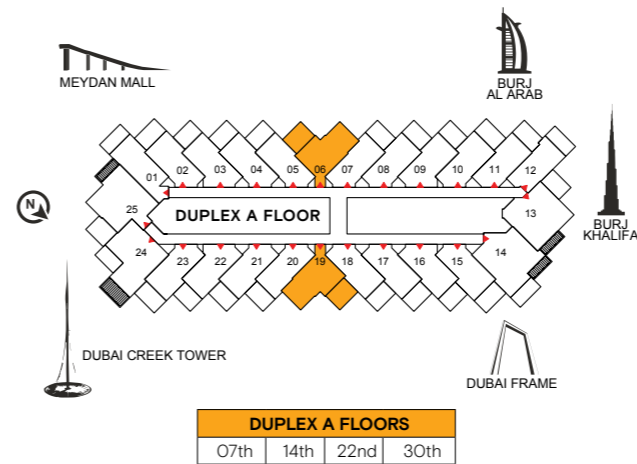
LOWER LEVEL FLOOR PLAN



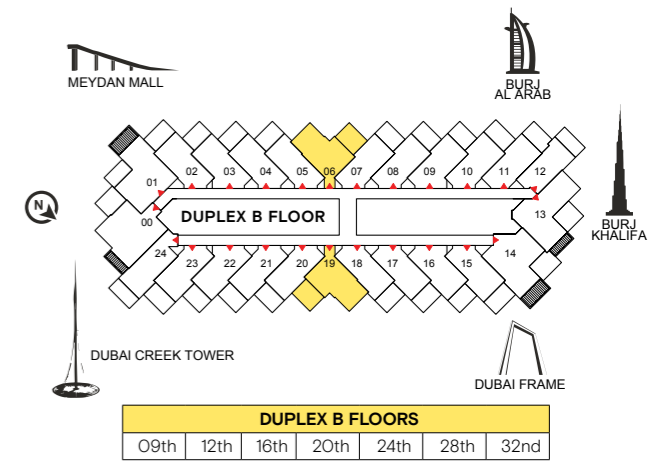
UPPER LEVEL FLOOR PLAN



	M ²	Sqft
LOWER LEVEL INDOOR AREA	58.27	627
LOWER LEVEL OUTDOOR AREA	16.82	181
UPPER LEVEL INDOOR AREA	49.11	529
UNIT TOTAL AREA	124.20	1,337

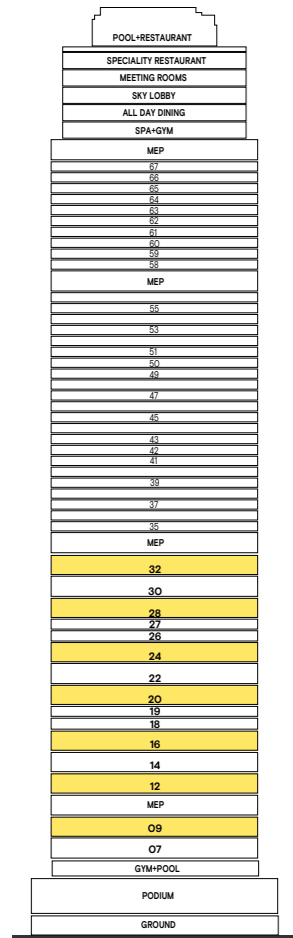
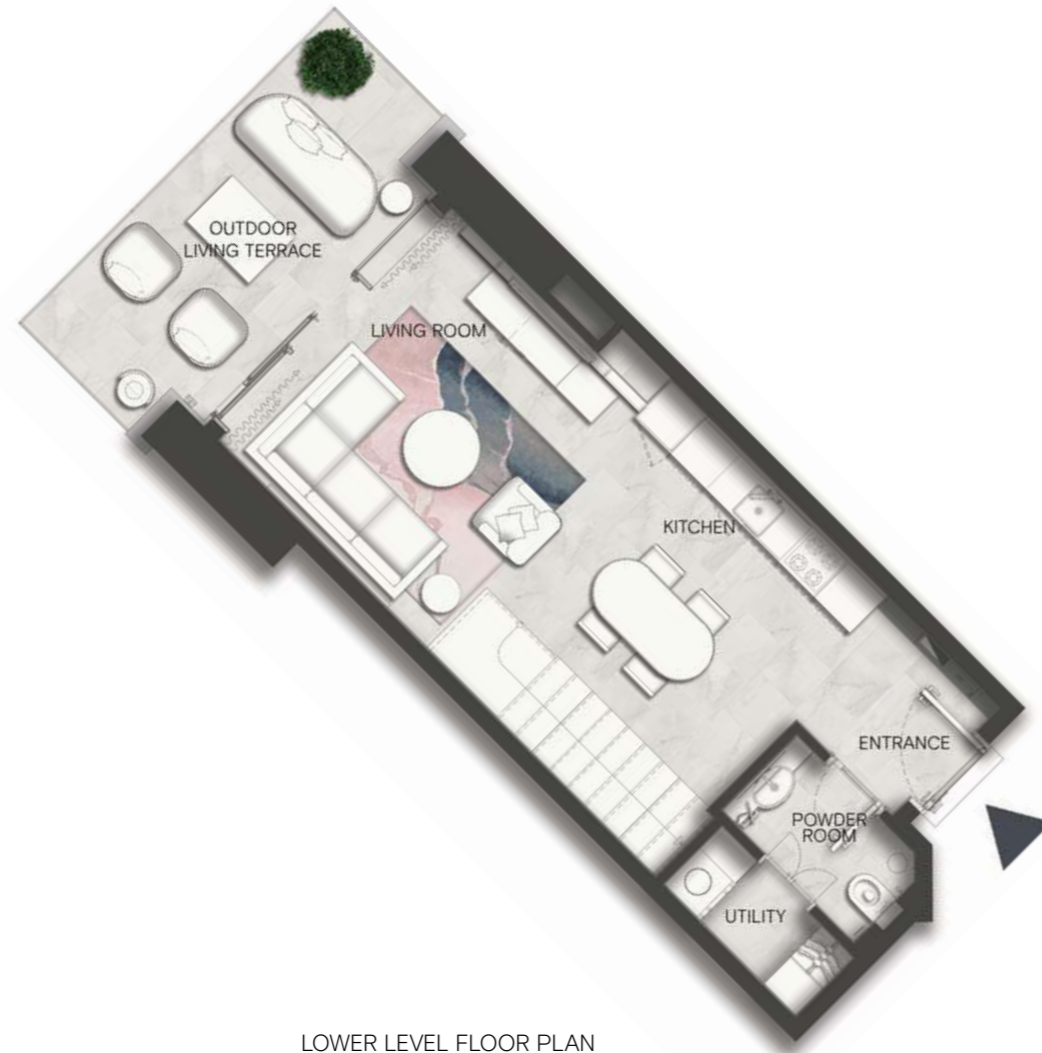


DUPLEX A FLOORS			
07th	14th	22nd	30th



DUPLEX B FLOORS						
09th	12th	16th	20th	24th	28th	32nd

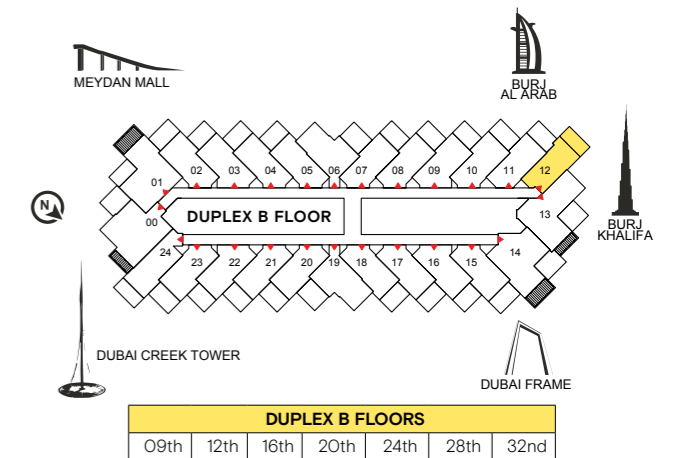
ONE BEDROOM LOFT TYPE C



LOWER LEVEL FLOOR PLAN

UPPER LEVEL FLOOR PLAN

	M ²	Sqft
LOWER LEVEL INDOOR AREA	44.85	482
LOWER LEVEL OUTDOOR AREA	12.60	136
UPPER LEVEL INDOOR AREA	43.01	463
UNIT TOTAL AREA	100.46	1,081



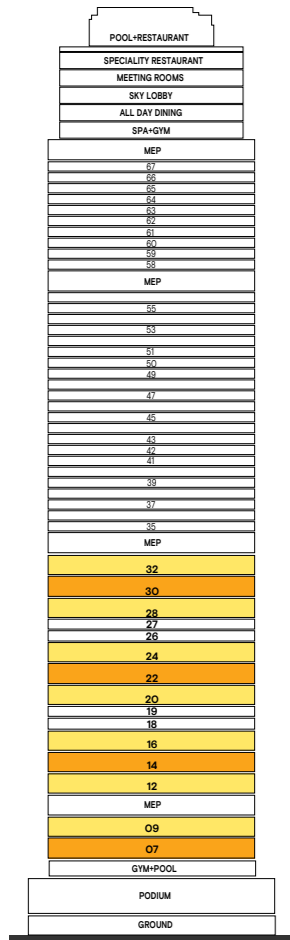
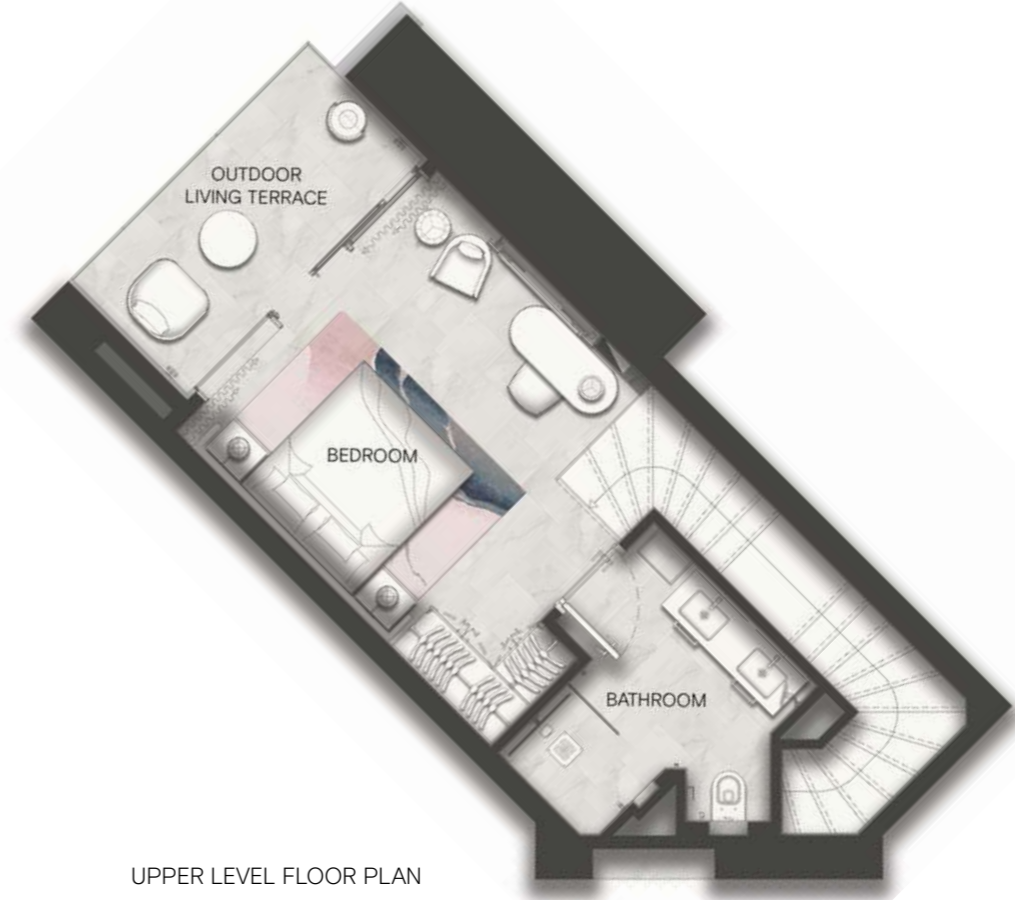
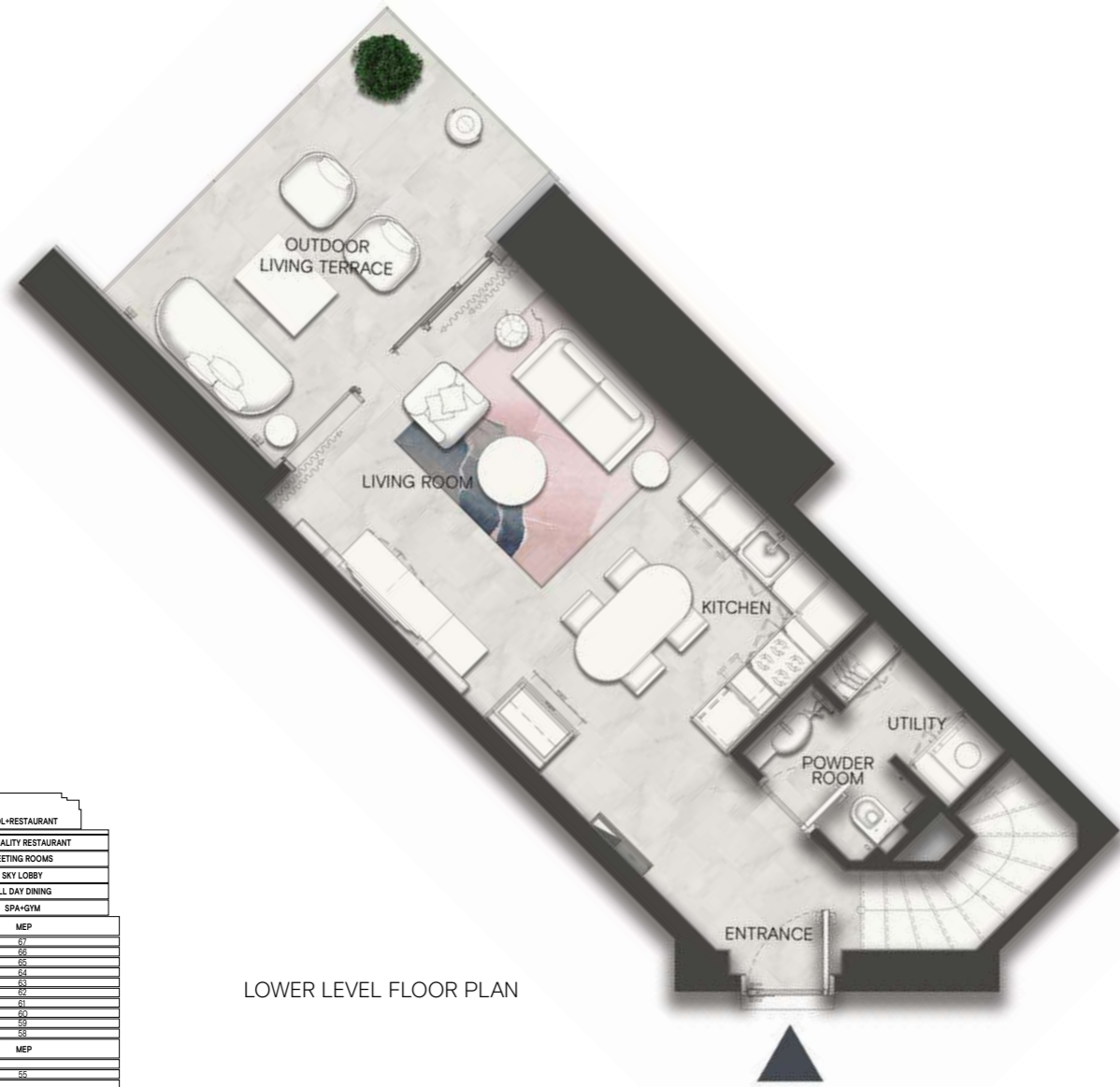
The contents of this SLS Dubai Residences floor plans brochure are for illustrative purposes only. The designs, facilities, amenities, numbering and layout of the units in the Project are not final and may be subject to change. Neither W O W Real Estate Development nor sbe Group (or their respective agents, consultants, affiliates or employees), warrants or assumes any legal liability or responsibility in any way for the accuracy, completeness, or usefulness of any information or illustrations contained within this floor plans brochure. The Developer is owned and operated independently to the brand operator and is solely responsible for the development of the Project. The "SLS" brand name and trade-marks are used under licence.

The contents of this SLS Dubai Residences floor plans brochure are for illustrative purposes only. The designs, facilities, amenities, numbering and layout of the units in the Project are not final and may be subject to change. Neither W O W Real Estate Development nor sbe Group (or their respective agents, consultants, affiliates or employees), warrants or assumes any legal liability or responsibility in any way for the accuracy, completeness, or usefulness of any information or illustrations contained within this floor plans brochure. The Developer is owned and operated independently to the brand operator and is solely responsible for the development of the Project. The "SLS" brand name and trade-marks are used under licence.

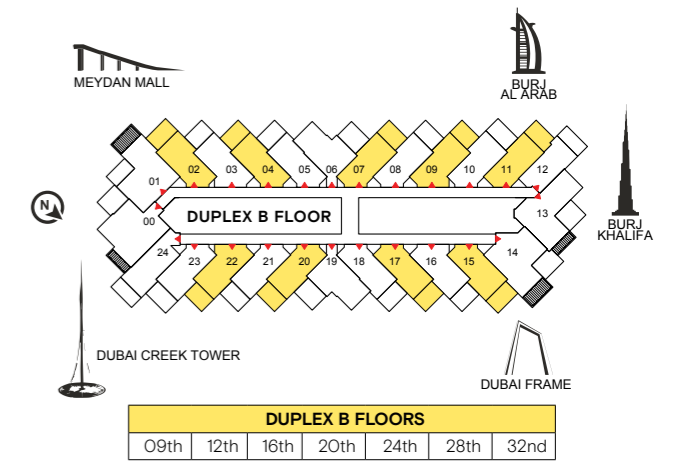
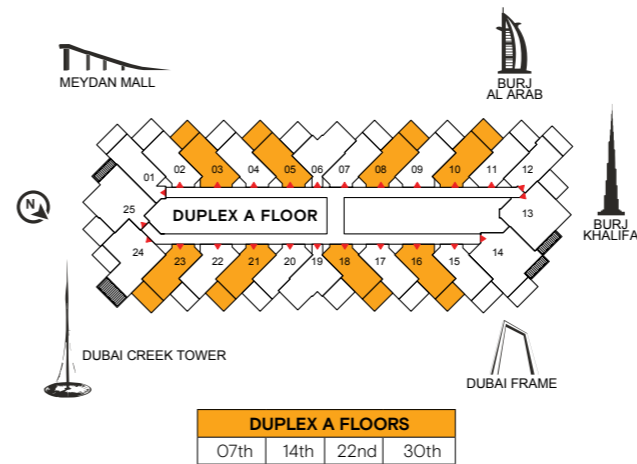


SLS DUBAI RESIDENCES - ONE BEDROOM LOFT LIVING ROOM

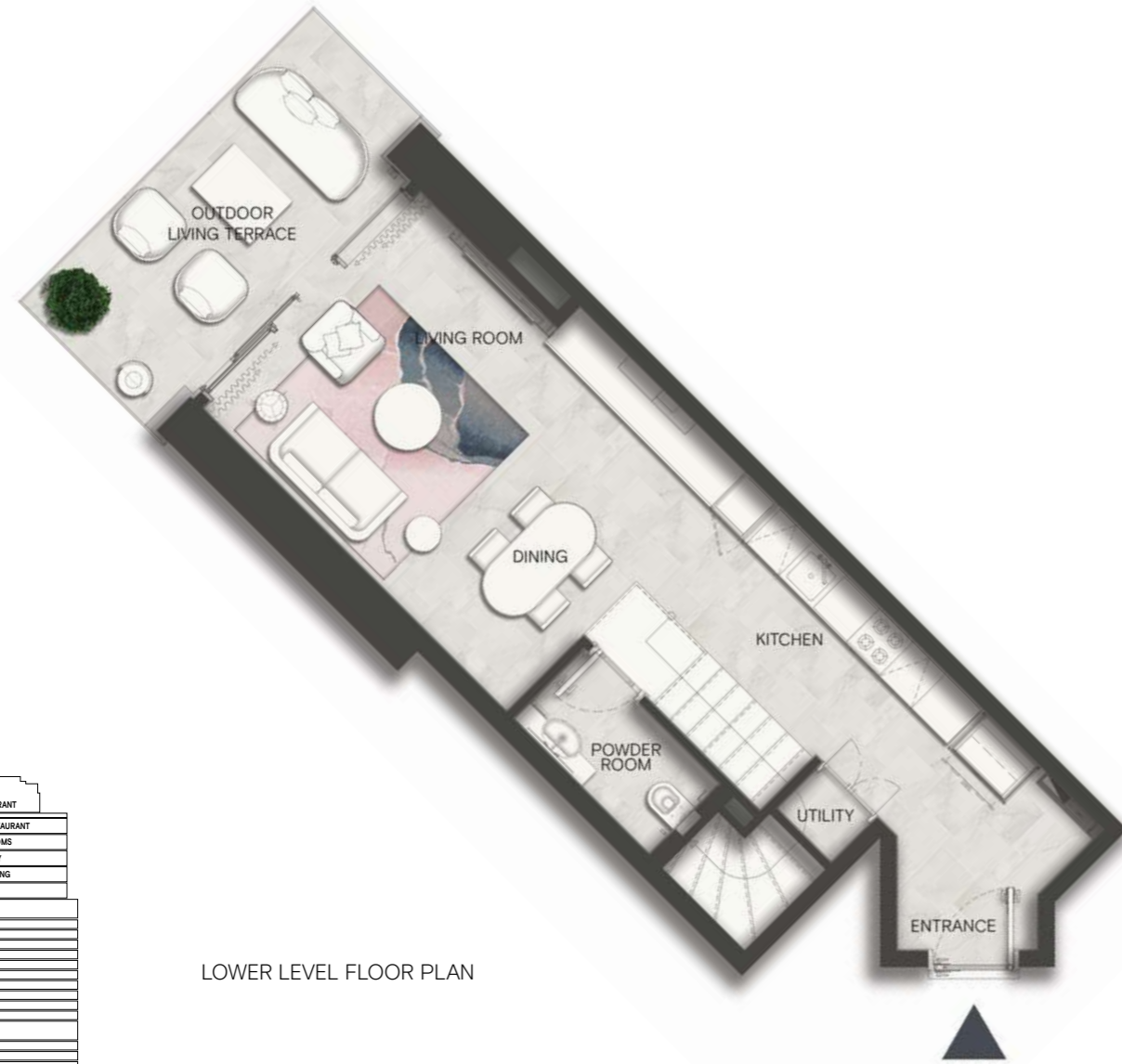
ONE BEDROOM DUPLEX TYPE A



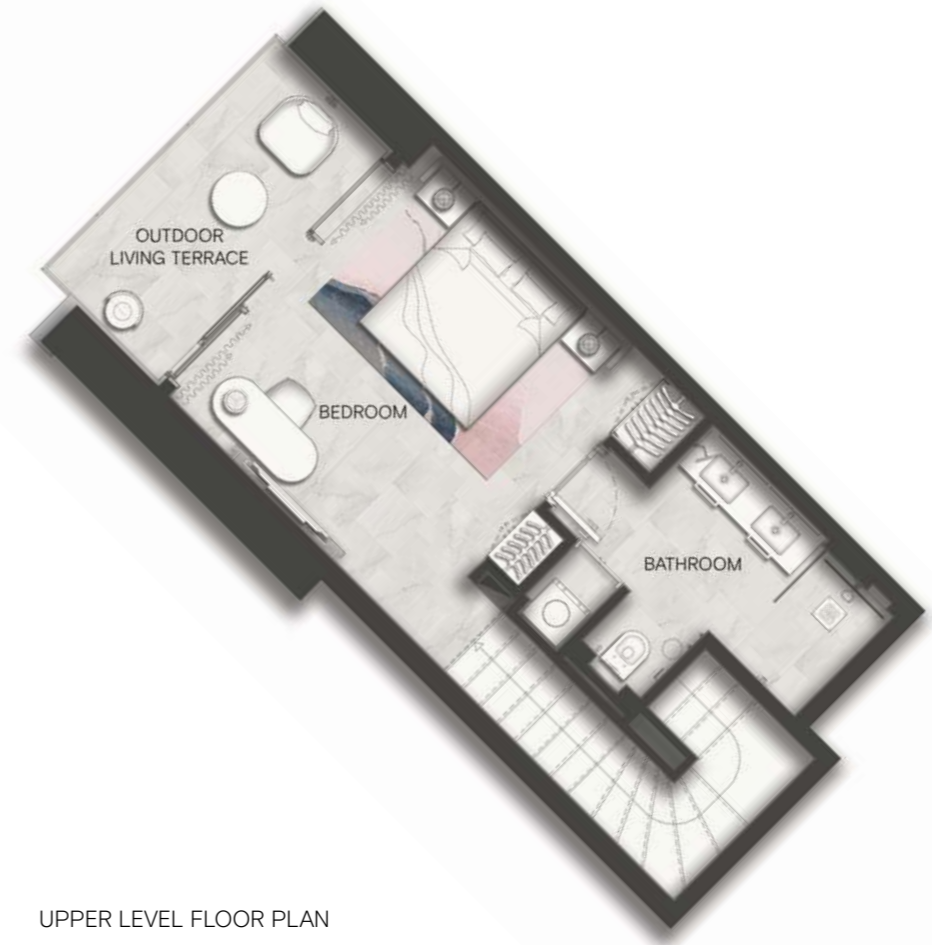
	M ²	Sqft
LOWER LEVEL INDOOR AREA	48.95	527
LOWER LEVEL OUTDOOR AREA	15.87	171
UPPER LEVEL INDOOR AREA	42.25	455
UPPER LEVEL OUTDOOR AREA	9.48	102
UNIT TOTAL AREA	116.55	1,255



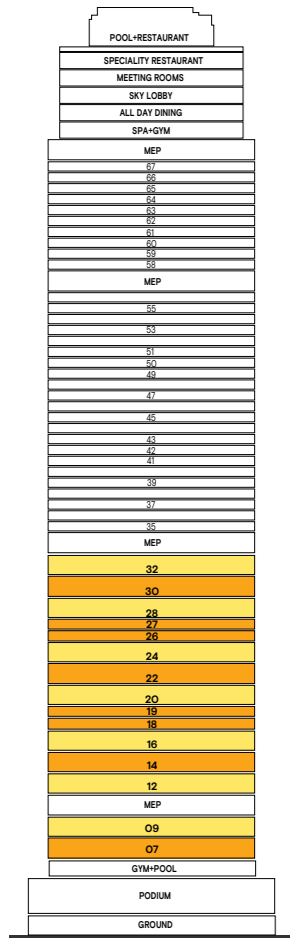
ONE BEDROOM DUPLEX TYPE B



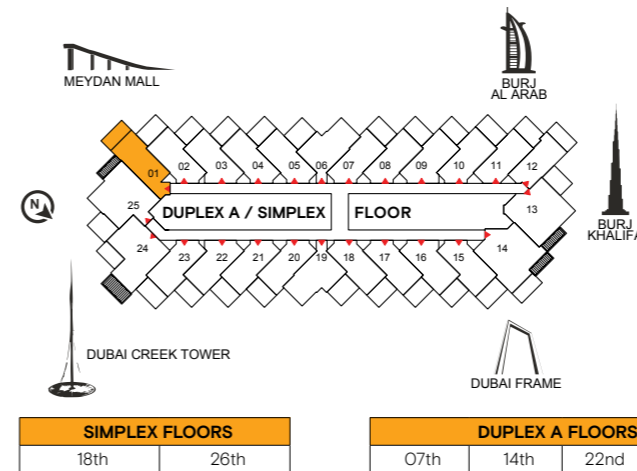
LOWER LEVEL FLOOR PLAN



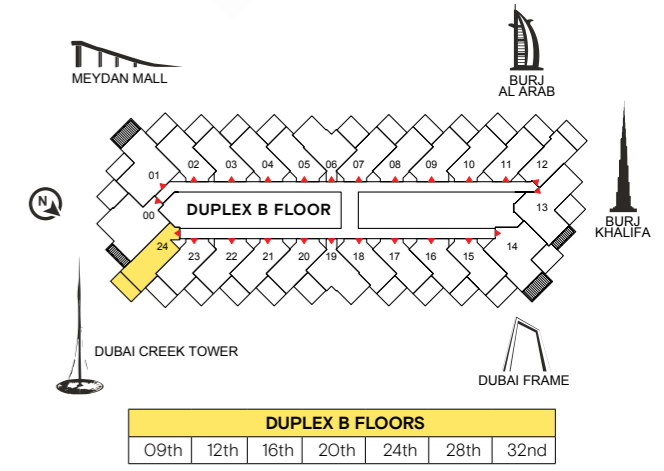
UPPER LEVEL FLOOR PLAN



	M ²	Sqft
LOWER LEVEL INDOOR AREA	53.44	575
LOWER LEVEL OUTDOOR AREA	12.64	136
UPPER LEVEL INDOOR AREA	40.11	432
UPPER LEVEL OUTDOOR AREA	9.10	98
UNIT TOTAL AREA	115.29	1,241

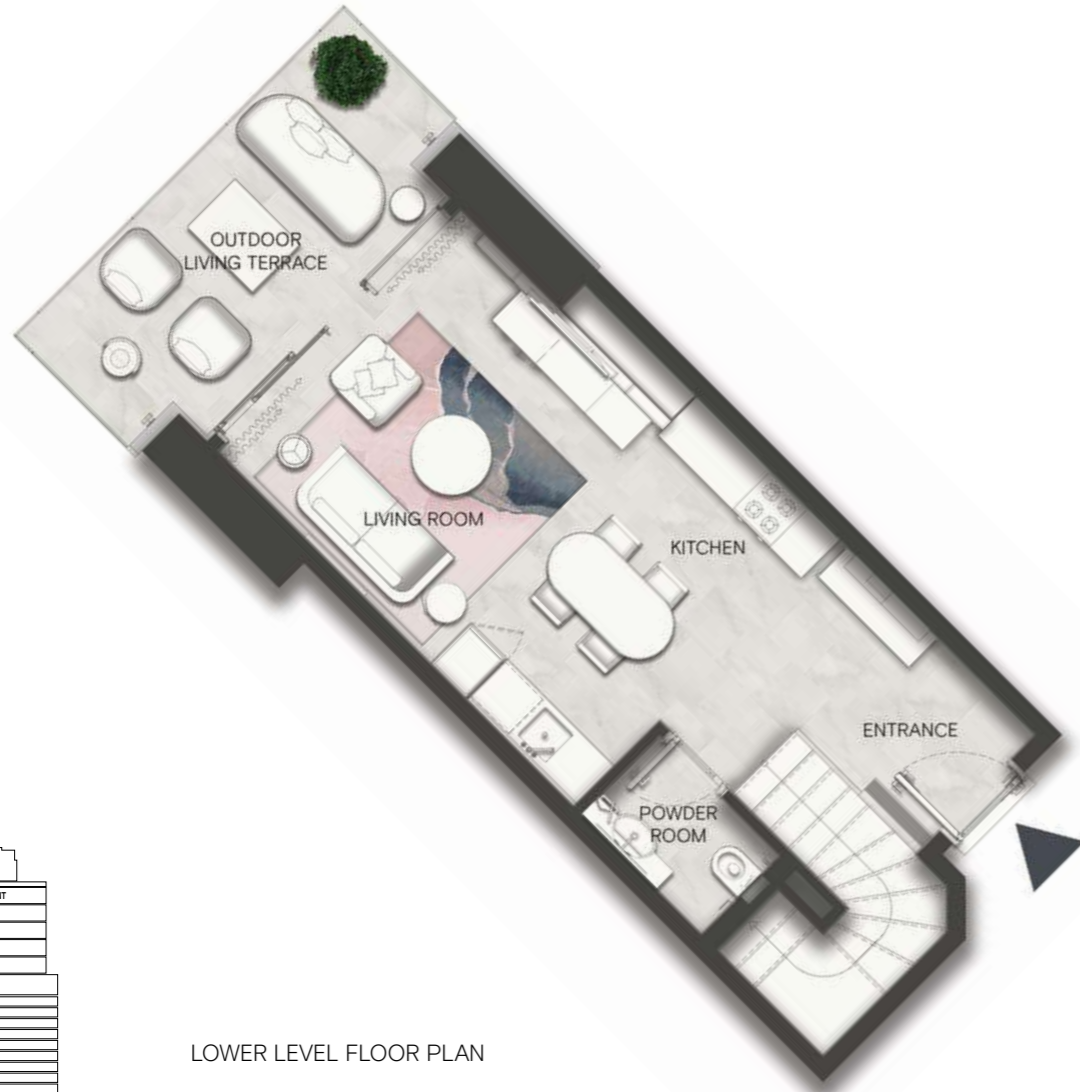


SIMPLEX FLOORS		DUPLEX A FLOORS			
18th	26th	07th	14th	22nd	30th



DUPLEX B FLOORS						
09th	12th	16th	20th	24th	28th	32nd

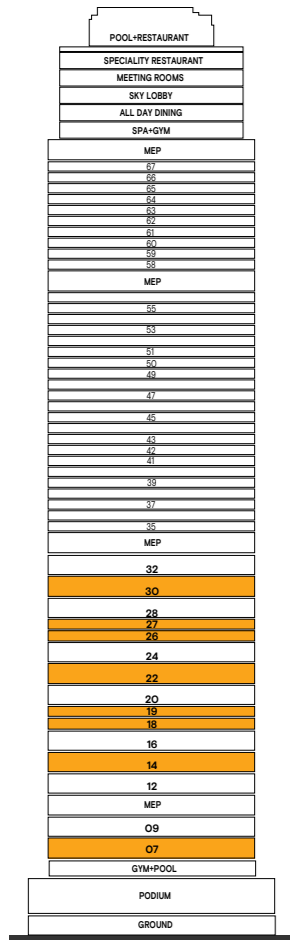
ONE BEDROOM DUPLEX TYPE C



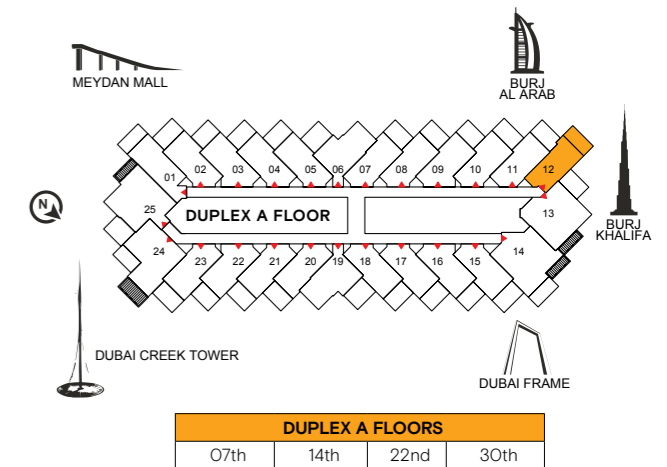
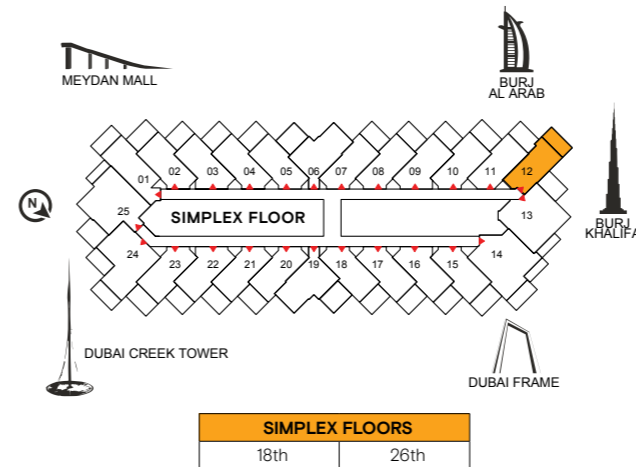
LOWER LEVEL FLOOR PLAN



UPPER LEVEL FLOOR PLAN



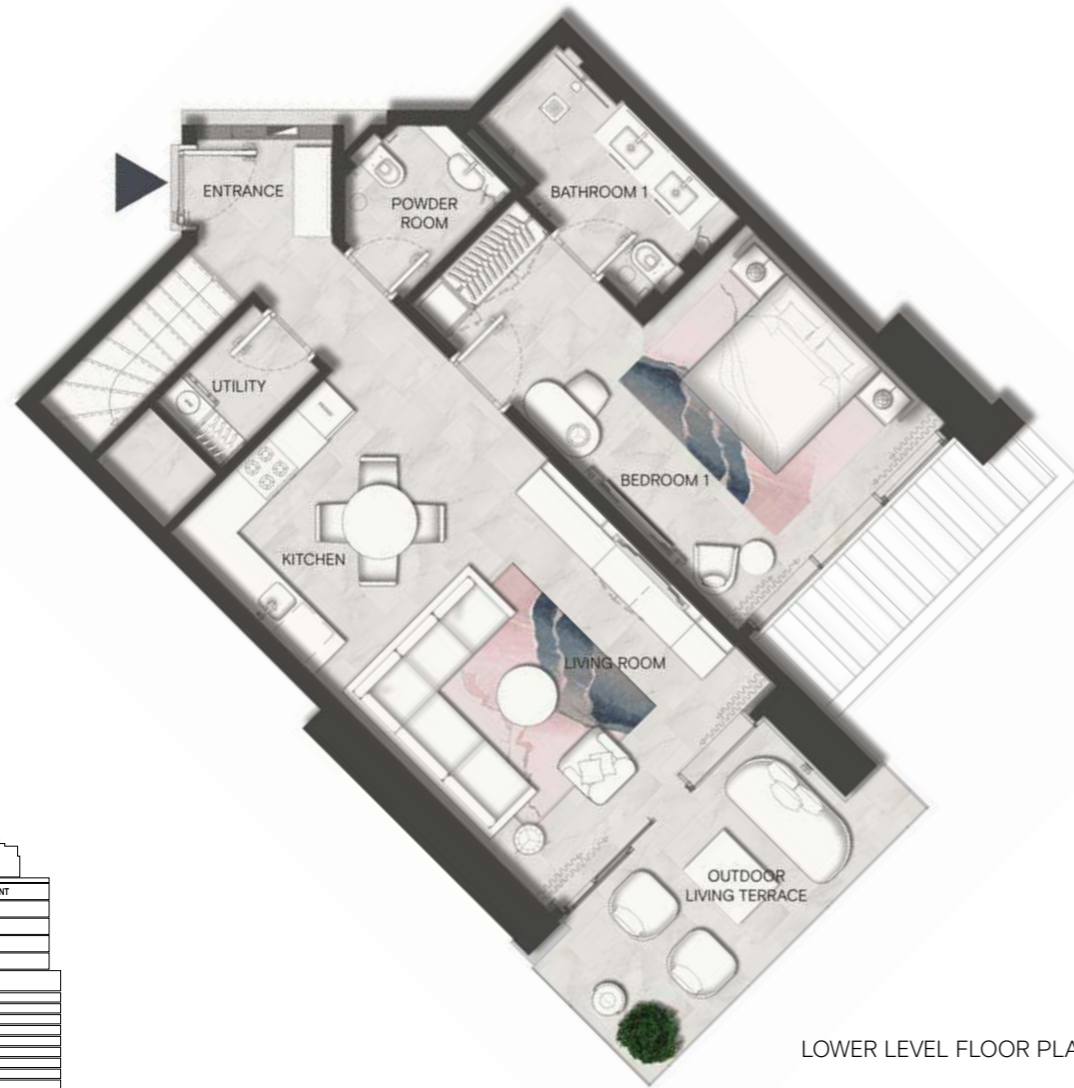
	M ²	Sqft
LOWER LEVEL INDOOR AREA	44.84	482
LOWER LEVEL OUTDOOR AREA	12.60	136
UPPER LEVEL INDOOR AREA	40.12	432
UPPER LEVEL OUTDOOR AREA	8.94	96
UNIT TOTAL AREA	106.50	1,146





SLS DUBAI RESIDENCES - TWO BEDROOM DUPLEX

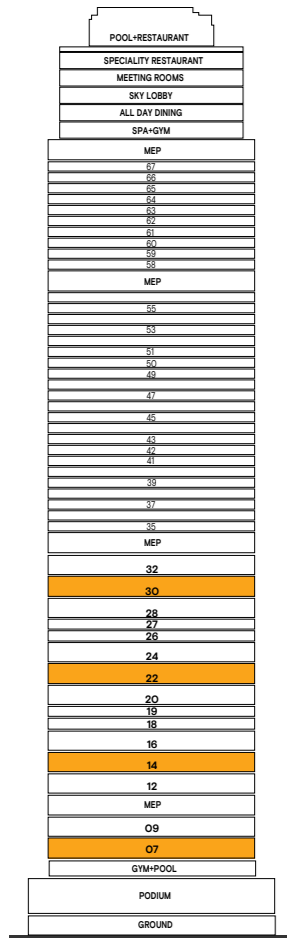
TWO BEDROOM LOFT



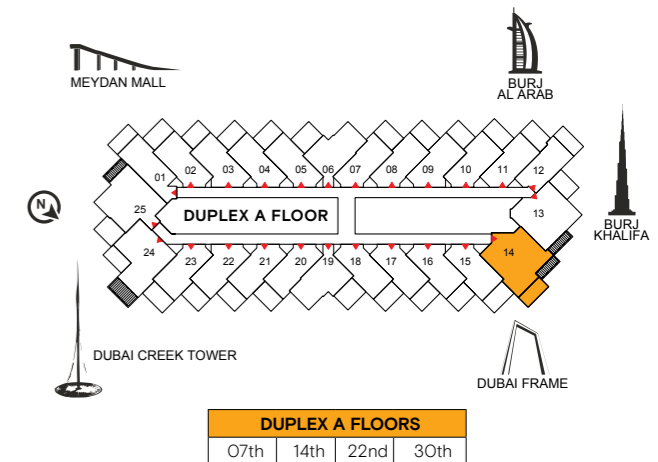
LOWER LEVEL FLOOR PLAN



UPPER LEVEL FLOOR PLAN



	M ²	Sqft
LOWER LEVEL INDOOR AREA	83.21	895
LOWER LEVEL OUTDOOR AREA	12.54	135
UPPER LEVEL INDOOR AREA	62.96	678
UPPER LEVEL OUTDOOR AREA	6.61	71
UNIT TOTAL AREA	165.32	1,779



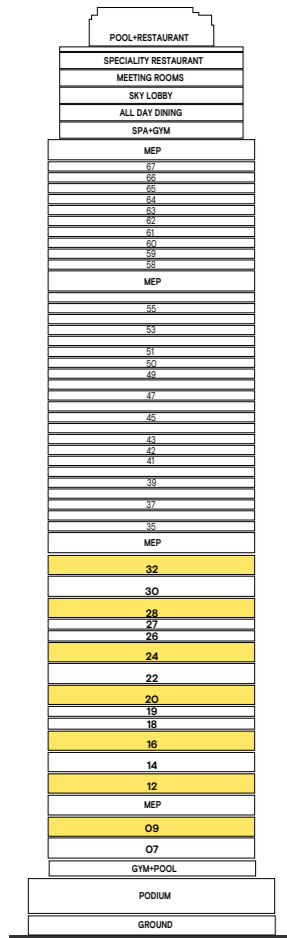
TWO BEDROOM DUPLEX TYPE A



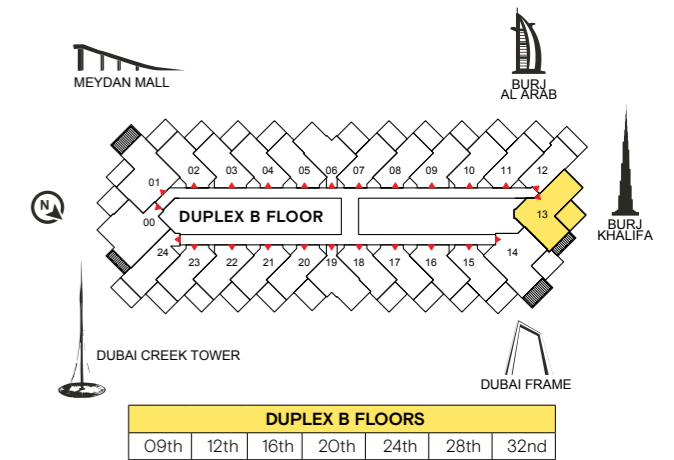
LOWER LEVEL FLOOR PLAN



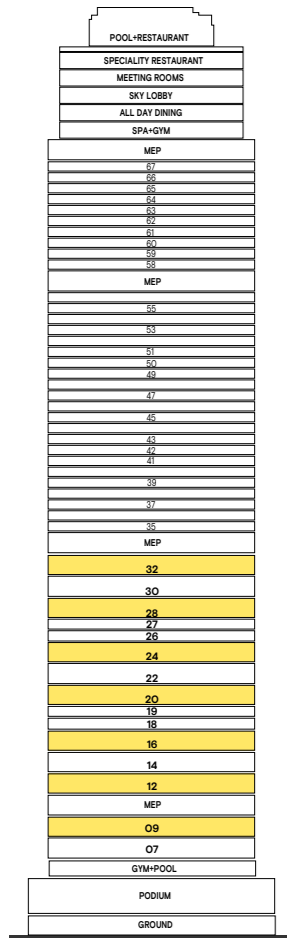
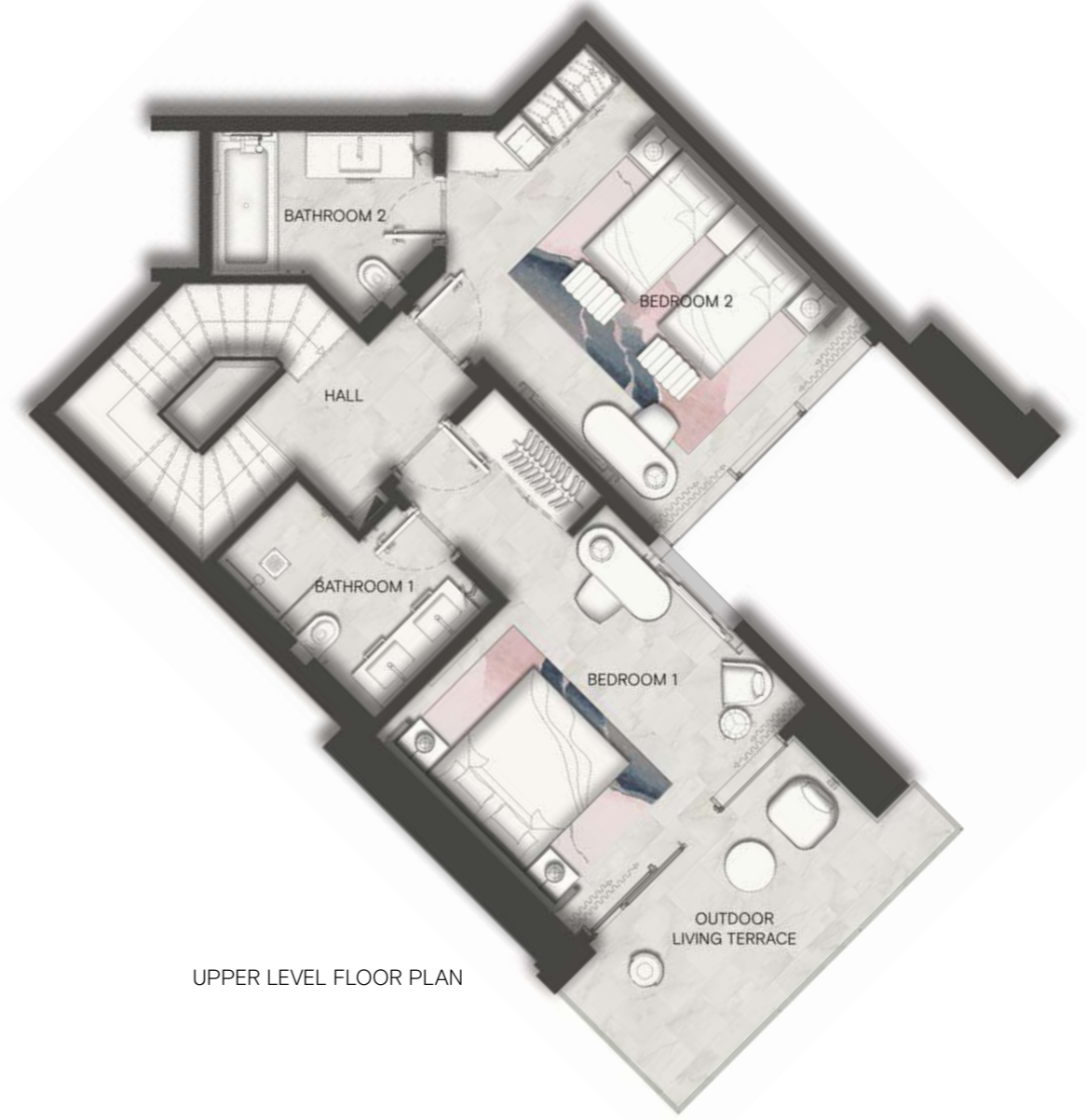
UPPER LEVEL FLOOR PLAN



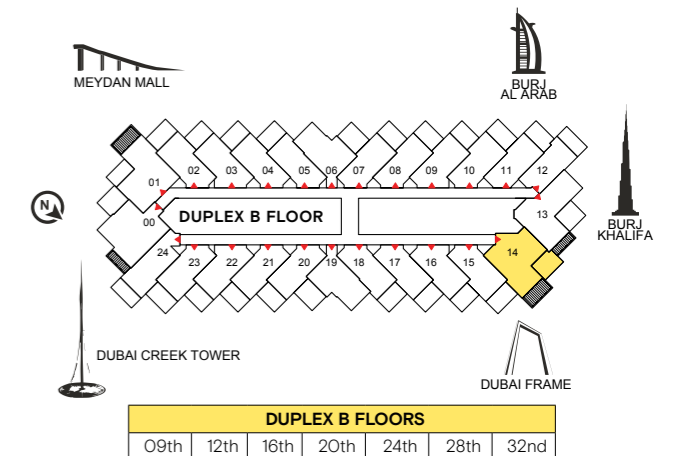
	M ²	Sqft
LOWER LEVEL INDOOR AREA	77.36	832
LOWER LEVEL OUTDOOR AREA	16.31	176
UPPER LEVEL INDOOR AREA	78.05	840
UPPER LEVEL OUTDOOR AREA	7.78	84
UNIT TOTAL AREA	179.50	1,932



TWO BEDROOM DUPLEX TYPE B



	M ²	Sqft
LOWER LEVEL INDOOR AREA	75.43	802
LOWER LEVEL OUTDOOR AREA	16.00	172
UPPER LEVEL INDOOR AREA	75.10	808
UPPER LEVEL OUTDOOR AREA	12.54	135
UNIT TOTAL AREA	178.07	1,917



The contents of this SLS Dubai Residences floor plans brochure are for illustrative purposes only. The designs, facilities, amenities, numbering and layout of the units in the Project are not final and may be subject to change. Neither W O W Real Estate Development nor sbe Group (or their respective agents, consultants, affiliates or employees), warrants or assumes any legal liability or responsibility in any way for the accuracy, completeness, or usefulness of any information or illustrations contained within this floor plans brochure. The Developer is owned and operated independently to the brand operator and is solely responsible for the development of the Project. The "SLS" brand name and trade-marks are used under licence.

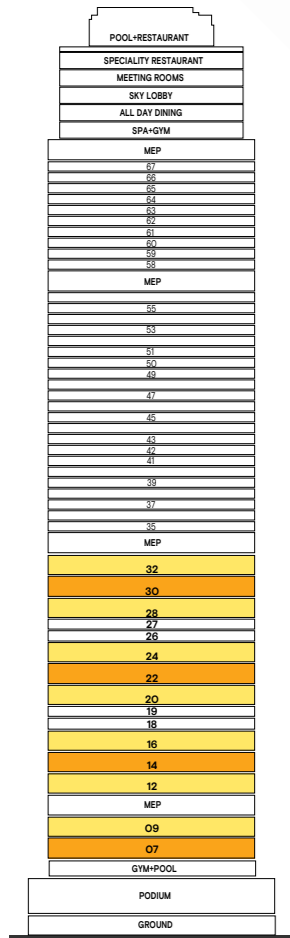
The contents of this SLS Dubai Residences floor plans brochure are for illustrative purposes only. The designs, facilities, amenities, numbering and layout of the units in the Project are not final and may be subject to change. Neither W O W Real Estate Development nor sbe Group (or their respective agents, consultants, affiliates or employees), warrants or assumes any legal liability or responsibility in any way for the accuracy, completeness, or usefulness of any information or illustrations contained within this floor plans brochure. The Developer is owned and operated independently to the brand operator and is solely responsible for the development of the Project. The "SLS" brand name and trade-marks are used under licence.

TWO BEDROOM DUPLEX TYPE C

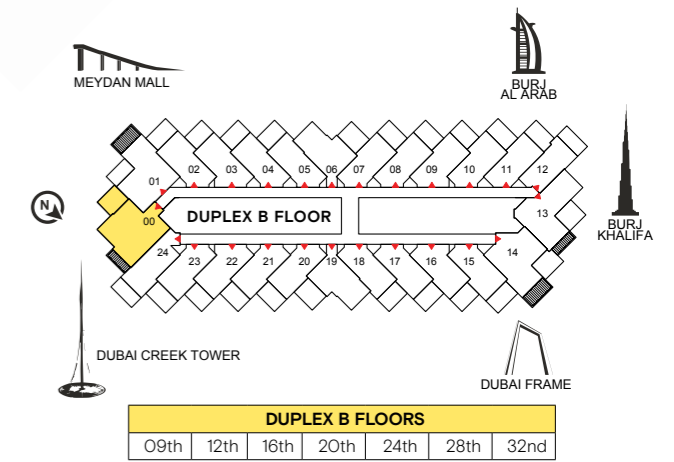
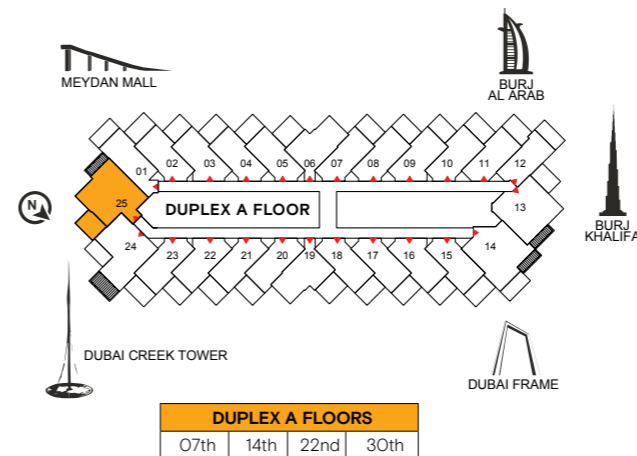


LOWER LEVEL FLOOR PLAN

UPPER LEVEL FLOOR PLAN



	M ²	Sqft
LOWER LEVEL INDOOR AREA	82.32	886
LOWER LEVEL OUTDOOR AREA	15.02	162
UPPER LEVEL INDOOR AREA	77.79	837
UPPER LEVEL OUTDOOR AREA	7.11	77
UNIT TOTAL AREA	182.24	1,962



The contents of this SLS Dubai Residences floor plans brochure are for illustrative purposes only. The designs, facilities, amenities, numbering and layout of the units in the Project are not final and may be subject to change. Neither W O W Real Estate Development nor sbe Group (or their respective agents, consultants, affiliates or employees), warrants or assumes any legal liability or responsibility in any way for the accuracy, completeness, or usefulness of any information or illustrations contained within this floor plans brochure. The Developer is owned and operated independently to the brand operator and is solely responsible for the development of the Project. The "SLS" brand name and trade-marks are used under licence.

The contents of this SLS Dubai Residences floor plans brochure are for illustrative purposes only. The designs, facilities, amenities, numbering and layout of the units in the Project are not final and may be subject to change. Neither W O W Real Estate Development nor sbe Group (or their respective agents, consultants, affiliates or employees), warrants or assumes any legal liability or responsibility in any way for the accuracy, completeness, or usefulness of any information or illustrations contained within this floor plans brochure. The Developer is owned and operated independently to the brand operator and is solely responsible for the development of the Project. The "SLS" brand name and trade-marks are used under licence.

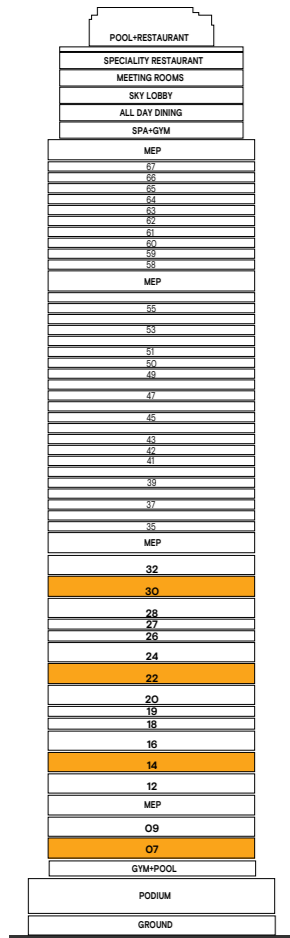
TWO BEDROOM DUPLEX TYPE D



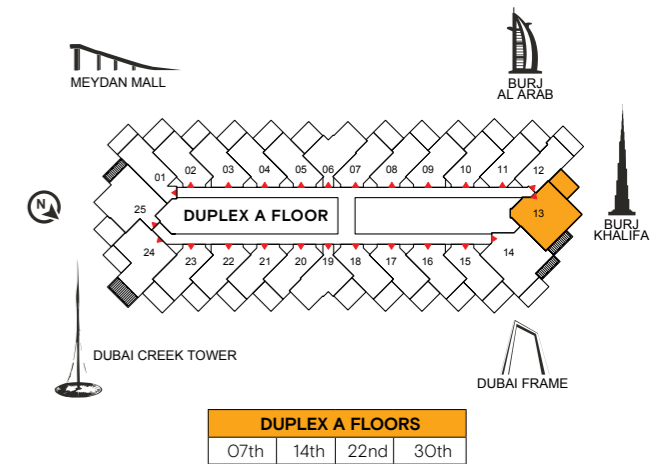
LOWER LEVEL FLOOR PLAN



UPPER LEVEL FLOOR PLAN



	M ²	Sqft
LOWER LEVEL INDOOR AREA	80.22	863
LOWER LEVEL OUTDOOR AREA	13.46	145
UPPER LEVEL INDOOR AREA	80.05	862
UPPER LEVEL OUTDOOR AREA	7.33	79
UNIT TOTAL AREA	181.06	1,949



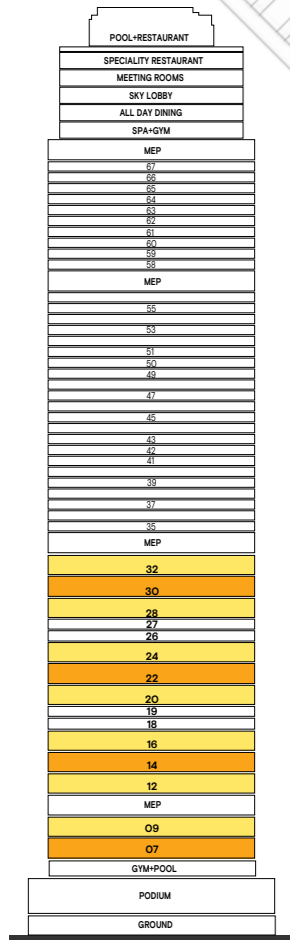
TWO BEDROOM DUPLEX TYPE E



LOWER LEVEL FLOOR PLAN



UPPER LEVEL FLOOR PLAN



	M ²	Sqft
LOWER LEVEL INDOOR AREA	76.21	820
LOWER LEVEL OUTDOOR AREA	11.58	125
UPPER LEVEL INDOOR AREA	78.04	840
UPPER LEVEL OUTDOOR AREA	12.63	136
UNIT TOTAL AREA	178.46	1,921

