

# **MTA**

## **Attachment Guide**



Scan and find out  
more information  
on [manitou.com](http://manitou.com)

 **MANITOU**  
HANDLING YOUR WORLD

**DYNATTACH®**



- Standard on all MTA models (excluding MTA 519)
- Automatic latching system - no pins to lose on site
- Narrow design to increase operator vision to attachment
- Best for lift and place use

**DYNACARRIER®**



- Optional on MTA 642, MTA 842, MTA 1055, MTA 1242 and MTA 1255
- A tool carrier type attachment system
- Wider design to provide more support for wider attachments
- Manual or hydraulic locking system available - no pins to lose on the site
- Best for wider attachment use or tool carrier use

**SKID STEER ATTACH**



- Standard on MTA 519, ULM 412 H and ULM 415 H

**Table of Contents**

3	-----	Standard shaft fork carriages
4	-----	Rotating shaft fork carriages
5	-----	Side shift carriages
6	-----	Fork shift carriages
7	-----	Swing carriages
8	-----	Log and pipe grapple
9	-----	Light material buckets
10	-----	Truss booms
11	-----	Truss booms with winch
12	-----	Auger drive
13	-----	Standard work platform
14	-----	Lifting shackle
15	-----	Lifting hook
16	-----	Universal skid steer mount
17	-----	Block forks
18	-----	Lumber forks
19	-----	Pallet forks
20	-----	Fork-mounted trash bin



# Standard shaft fork carriages



## Technical information

- Standard shaft fork carriages with 2.0" or 2.5" diameter shafts
- Shaft-mounted in frame slots – allow for up to 3" of vertical shaft adjustment for placing loads on uneven surfaces
- Backrest is 36" tall
- Center vertical support is 1.5" wide, so smallest possible distance between forks is 1.5"

# Rotating shaft fork carriages

Note: requires auxiliary hydraulic boom lines



## Technical information

- Rotating shaft fork carriages with 2.0" or 2.5" diameter shafts
- Shaft-mounted in frame slots – allow for up to 3" of vertical shaft adjustment for placing loads on uneven surfaces
- Backrest is 36" tall
- Hydraulic powered cylinder rotates load 10 degrees to left or right
- This cylinder is mounted on the right side of the frame to maximize operator visibility to the forks
- Due to center pivot for carriage rotation, minimum fork distance is 4" between forks

## Compatibility

DYNATTACH® and DYNACARRIER® part numbers by model

### DYNATTACH®

	N820347	N820348	805375	805501	804978	804979	N820261	807359	807361	N820351
DESCRIPTION	48" wide	66" wide	48" wide	66" wide	48" wide	66" wide	72" wide	48" wide	66" wide	72" wide
SHAFT SIZE	2"	2"	2"	2"	2"	2"	2"	2.5"	2.5"	2.5"
MODELS										
MTA 5519	X	X								
MTA 6034			X	X						
MTA 6642					X	X	X			
MTA 642					X	X	X			
MTA 8044					X	X	X			
MTA 842					X	X	X			
MTA 9050					X	X				
MTA 10044					X	X	X			
MTA 10055					X	X	X			
MTA 1055					X	X	X			
MTA 12042								X	X	X
MTA 1242								X	X	X
MTA 12055								X	X	X
MTA 1255								X	X	X

### DYNACARRIER®

PART NUMBER	806062	806417	N820262	807358	807360	N820362
DESCRIPTION	48" wide	66" wide	72" wide	48" wide	66" wide	72" wide
SHAFT SIZE	2"	2"	2"	2.5"	2.5"	2.5"
MODELS						
MTA 1055				X	X	X
MTA 1242				X	X	X
MTA 12055				X	X	X
MTA 1255				X	X	X

## Compatibility

DYNATTACH® and DYNACARRIER® part numbers by model

### DYNATTACH®

PART NUMBER	N820355	N820356	805502	805503	804614	804616	N820123	N820124
DESCRIPTION	48" wide	66" wide	48" wide	66" wide	48" wide	66" wide	48" wide	66" wide
SHAFT SIZE	2"	2"	2"	2"	2"	2"	2.5"	2.5"
MODELS								
MTA 5519	X	X						
MTA 6034			X	X				
MTA 6642					X	X		
MTA 642					X	X		
MTA 8044					X	X		
MTA 9050					X	X		
MTA 10044					X	X		
MTA 10055					X	X		
MTA 1055					X	X		
MTA 12042							X	X
MTA 1242							X	X
MTA 12055							X	X
MTA 1255							X	X

### DYNACARRIER®

PART NUMBER	807262	807263	N820125	N820126
DESCRIPTION	48" wide	66" wide	48" wide	66" wide
SHAFT SIZE	2"	2"	2.5"	2.5"
MODELS				
MTA 1055			X	X
MTA 12042			X	X
MTA 1242			X	X
MTA 12055			X	X
MTA 1255			X	X

# Side shift carriages

Note: requires auxiliary hydraulic boom lines



## Technical Information

- Side-shifting shaft type fork carriage with 2.0" diameter shaft
- Shaft-mounted in frame slots – allow for up to 3" of vertical shaft adjustment for placing loads on uneven surfaces
- Hydraulic powered cylinder moves fork carriage up to 4.0" left or right
- Cylinder is mounted on right frame to maximize operator visibility to forks
- Backrest is 36" tall
- Center vertical support is .75" wide, so smallest possible distance between forks is .75"

# Fork shift carriages

Note: requires auxiliary hydraulic boom lines



## Technical Information

- Single fork positioning shaft fork carriages with 2.0" diameter shafts
- Hydraulic powered cylinder moves left fork to allow correct fork spacing for multiple pallet sizes. Operator aligns right fork with pallet and then uses the hydraulic auxiliary function to move the left fork into correct position.
- Backrest is 44" tall
- Left fork movement is up to 16.75" on 50" wide and 26.25" on 72" wide

## Compatibility

DYNATTACH® part numbers by model

### DYNATTACH®

<b>PART NUMBER</b>	<b>50860090</b>
<b>DESCRIPTION</b>	48" wide
<b>SHAFT SIZE</b>	2"
<b>MODELS</b>	
MTA 5519	X
MTA 6034	X

## Compatibility

DYNATTACH® part numbers by model

### DYNATTACH®

PART NUMBER	50841776	50841775	50860225
DESCRIPTION	50" wide	50" wide	72" wide
SHAFT SIZE	2"	2"	2.5"
MODELS			
MTA 5519	X		
MTA 6034	X		
MTA 6642		X	
MTA 642		X	
MTA 8044		X	
MTA 10044		X	
MTA 10055		X	
MTA 1055		X	
MTA 12042			X
MTA 1242			X
MTA 12055			X
MTA 1255			X

# Swing carriages

Note: requires auxiliary hydraulic boom lines



## Technical Information

- Shaft fork carriages with 2.0" diameter shafts hydraulic powered cylinder controls pivot of fork carriage to left or right - allows operators to swing the loads off center for placement in open windows or to the side of the machine.
- Angle of pivot/swing is controlled with hydraulic auxiliary boom function
- 90 degree total is 45 degrees left/right of center
- 180 degree total is 90 degrees left/right of center
- Backrest is 45" tall
- PN 807105 is 66" wide, PN 50860041 is 66" wide

# Log and pipe grapple

Note: requires auxiliary hydraulic boom lines



## Technical Information

- Shaft fork carriages with single, counter mounted, hydraulic operated hold down
- Designed for use with long, large diameter objects. Hydraulic powered center hold down is used to hold objects on forks.
- Backrest is 32" tall and grapple pin height is 33"
- Includes 60" x 5" x 2" pallet forks rated at 10,000 lbs.
- Maximum open is 57" from top of fork to tip of grapple.
- Minimum close is 7.6" from grapple to backrest with grapple tips below forks.

## Compatibility

DYNAT TACH® part numbers by model

### DYNAT TACH®

PART NUMBER	807105	50860041
DESCRIPTION	90 degree	180 degree
SHAFT SIZE	2"	2"
MODELS		
MTA 6642	X	X
MTA 642	X	X
MTA 8044	X	X
MTA 10044	X	X
MTA 10055	X	
MTA 1055	X	
MTA 12042	X	X
MTA 1242	X	X
MTA 12055	X	
MTA 1255	X	

## Compatibility

DYNAT TACH® and DYNACARRIER® part numbers by model

### DYNAT TACH®

PART NUMBER	806434
DESCRIPTION	78" wide
SHAFT SIZE	2"
MODELS	
MTA 6642	X
MTA 642	X
MTA 8042	X
MTA 842	X
MTA 8044	X
MTA 10044	X
MTA 12042	X
MTA 1242	X
MTA 12055	X
MTA 1255	X

### DYNACARRIER®

PART NUMBER	806073
DESCRIPTION	78" wide
SHAFT SIZE	2"
MODELS	
MTA 1055	X
MTA 12055	X
MTA 1255	X

# Light material buckets



## Technical Information

- Welded cutting edge for 820313, 808141, 808142
- Bolt-on cutting edge for 806067 is 169167 and for 820005 is 100341

# Truss booms



## Technical Information

- Designed for use with suspended loads
- Quick attach mounted with extended horizontal reach to aid in load placement
- A pintle hook at the end of the attachment provides a positive retention method for chains or straps to the suspended load. A pintle hook is forged steel with a 1.88" inner eye and includes a chained locking cotter pin.
- Maximum capacity for the attachment is listed; however, the machine load chart should be used to determine the correct capacity for the attachment based on the position of the boom and machine.
- Refer to the operator's manual for further information on operating the telescopic handler with suspended loads.

## COMPATIBILITY

DYNATTACH® and DYNACARRIER® part numbers by model

### DYNATTACH®

PART NUMBER	N820313	808141	808142
DESCRIPTION	1.0 yd³	1.3 yd³	1.3 yd³
SHAFT SIZE	71" wide	96" wide	96" wide
MODELS			
MTA 5519	X		
MTA 6034		X	
MTA 6642			X
MTA 642			X
MTA 8042			X
MTA 842			X
MTA 8044			X
MTA 10044			X
MTA 10055			X
MTA 1055			X
MTA 12042			X
MTA 12055			X
MTA 1255			X

### DYNACARRIER®

PART NUMBER	806067	N820005
DESCRIPTION	1.3 yd³	2.0 yd³
SHAFT SIZE	96" wide	100" wide
MODELS		
MTA 1055	X	
MTA 12055	X	
MTA 1255	X	

## Compatibility

DYNATTACH® and DYNACARRIER® part numbers by model

### DYNATTACH®

PART NUMBER	N820312	805505	N804604	804536
DESCRIPTION	5' Truss	8' Truss	12' Truss	15' Truss
MAX. CAPACITY	2,000 lbs.	2,000 lbs.	2,000 lbs.	2,000 lbs.
MODELS				
MTA 5519	X			
MTA 6034		X		
MTA 6642			X	
MTA 642			X	
MTA 8044				X
MTA 10044				X
MTA 10055				X
MTA 1055				X
MTA 12042				X
MTA 1242				X
MTA 12055			X	X
MTA 1255			X	X

### DYNACARRIER®

PART NUMBER	806316	807393
DESCRIPTION	12' Truss	15' Truss
MAX. CAPACITY	2,000 lbs.	2,000 lbs.
MODELS		
MTA 1055	X	X
MTA 12055	X	X
MTA 1255	X	X



# Truss booms with winch

Note: requires auxiliary hydraulic boom lines



## Technical Information

- Quick attach mounted with extended horizontal reach to aid in load placement of suspended loads
- A pintle hook at the end of the attachment provides a positive retention method for chains or straps to the suspended load. A pintle hook is forged steel with a 1.88" inner eye and includes a chained, locking cotter pin.
- Hydraulic powered winch with 3/8" diameter, 6 x 37 right regular lay improved plow steel cable. Maximum line speed is approximately 30 ft./min. the winch includes a spring-applied, hydraulic release brake.
- Maximum capacity for the attachment is listed; however, the machine load chart should be used to determine the correct capacity for the attachment based on the position of the boom and machine.
- Refer to the operator's manual for further information on operating the telescopic handler with suspended loads.

## Compatibility

DYNATTACH® and DYNACARRIER® part numbers by model

### DYNATTACH®

PART NUMBER	805504	N804605	807572	807574
DESCRIPTION	5' Truss	5' Truss	12' Truss	15' Truss
CABLE LENGTH	60 feet	60 feet	100 feet	100 feet
MAX. CAPACITY	3,000 lbs.	3,000 lbs.	2,000 lbs.	2,000 lbs.
MODELS				
MTA 6034	X			
MTA 6642		X	X	
MTA 642		X	X	
MTA 8044		X		X
MTA 10044		X		X
MTA 10055		X		X
MTA 1055		X		X
MTA 12042		X		X
MTA 1242		X		X
MTA 12055		X	X	X
MTA 1255		X	X	X

### DYNACARRIER®

PART NUMBER	806074	807573	807575
DESCRIPTION	5' Truss	12' Truss	15' Truss
CABLE LENGTH	60 feet	100 feet	100 feet
MAX. CAPACITY	3,000 lbs.	2,000 lbs.	2,000 lbs.
MODELS			
MTA 12055		X	X
MTA 1255		X	X

# Auger drive

Note: requires auxiliary hydraulic boom lines



## Technical Information

- Hydraulic-powered auger with 2 9/16" round shaft
- Options include 50" long 9", 12" and 18" diameter bits or 14" long extension

## Compatibility

DYNATTACH® and DYNACARRIER® part numbers by model

### DYNATTACH®

PART NUMBER	806548	806547
MODELS		
MTA 6034	X	
MTA 6642		X
MTA 642		X
MTA 8044		X
MTA 10044		X
MTA 10055		X
MTA 1055		X
MTA 12042		X
MTA 1242		X
MTA 12055		X
MTA 1255		X

### DYNACARRIER®

PART NUMBER	806435
MODELS	
MTA 12055	X
MTA 1255	X

# Standard work platform



## Technical Information

- Requires PWP system for use
- Mounts on standard fork carriage with locking pins to secure placement
- Features swing gates on both sides
- Railings can be removed for ease of transport
- Conforms to new ANSI b56.6 2017 standard
- 4' wide and 9.5' long

# Lifting shackle and pin



## Technical Information

- A secure lifting point for moving suspended loads
- Lift shackle may be used with or without attachments mounted
- Lift shackle has same capacity load chart as standard fork attachment for specified machine
- Lift shackle is standard equipment starting with RS5-19 RS519YK52245
- For earlier models, field update kit PN 50321502 can be ordered

## Compatibility

Fork Mounted part numbers by model

### FORK MOUNTED

PART NUMBER	N820147
<b>MODELS</b>	
MTA 6034	X
MTA 6642	X
MTA 642	X
MTA 8044	X
MTA 10044	X
MTA 10055	X
MTA 1055	X
MTA 12042	X
MTA 1242	X
MTA 12055	X
MTA 1255	X

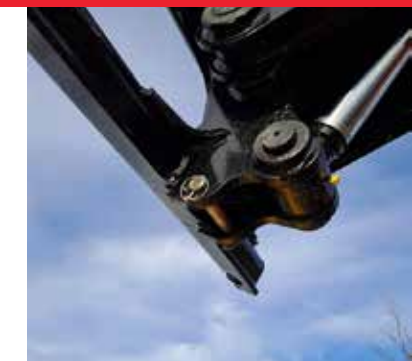
## Compatibility

DYNATTACH® standard equipment by model

### DYNATTACH®

DESCRIPTION	Lift Shackle
<b>MODELS</b>	
MTA 5519	X
MTA 6034	X

Update: Lifting pin is standard on the MTA 519





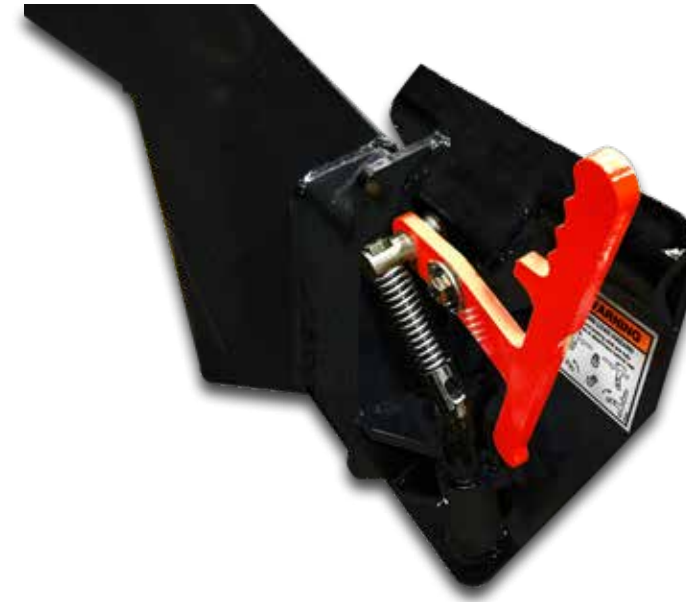
# Lifting hook



## Technical Information

- A secure lifting point for moving suspended loads
- Lift hook may be used with or without attachments mounted
- Lift hook has same capacity load chart as standard fork attachment for the respective machine
- Includes spring closing latch

# Universal skid steer mount



## Technical Information

- Mounts to Dynattach® and provides a secure attachment point for mounting universal skid steer attachment
- This attachment is not designed for use with skid steer attachments which will place excessive loads on the machine or couplers, such as ground or pile engagement. It is not designed for use with attachments which require high and/or continuous auxiliary hydraulic flow.
- The weight of the skid steer attachment used with the adapter mount is also restricted to below 1,000 lbs. (453 kg)

## Compatibility

DYNATTACH® and DYNACARRIER® part numbers by model

### DYNATTACH®

PART NUMBER	50860110	50860105
MODELS		
MTA 6642	X	
MTA 642	X	
MTA 8044	X	
MTA 10044	X	
MTA 10055		X
MTA 1055		X
MTA 12042	X	
MTA 1242	X	
MTA 12055		X
MTA 1255		X

### DYNACARRIER®

PART NUMBER	50860105
MODELS	
MTA 12055	X
MTA 1255	X

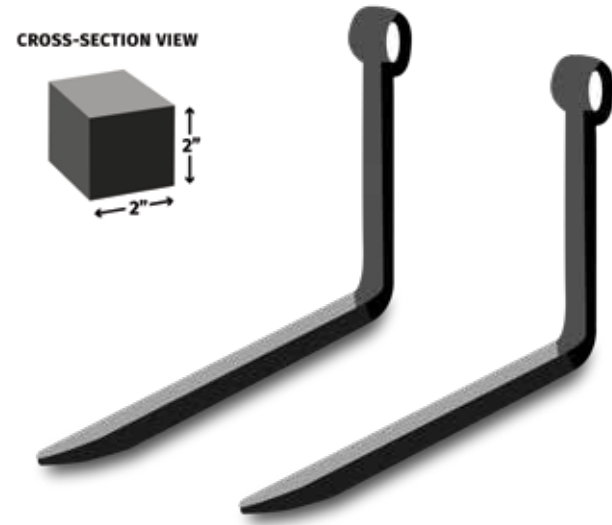
## Compatibility

DYNATTACH® part numbers by model

### DYNATTACH®

PART NUMBER	50860218
DESCRIPTION	Skid Steer Adapter
MODELS	
MTA 5519	X

# Block forks



## Technical Information

- 2" x 2" square forks
- Available in 48" long only
- 2" pin for smaller machines
- 2 1/2" pin for 12,000+ lbs. machines
- Note: Capacity is 2,000lbs. per fork. Amount of forks must be adjusted based on capacity of machine.

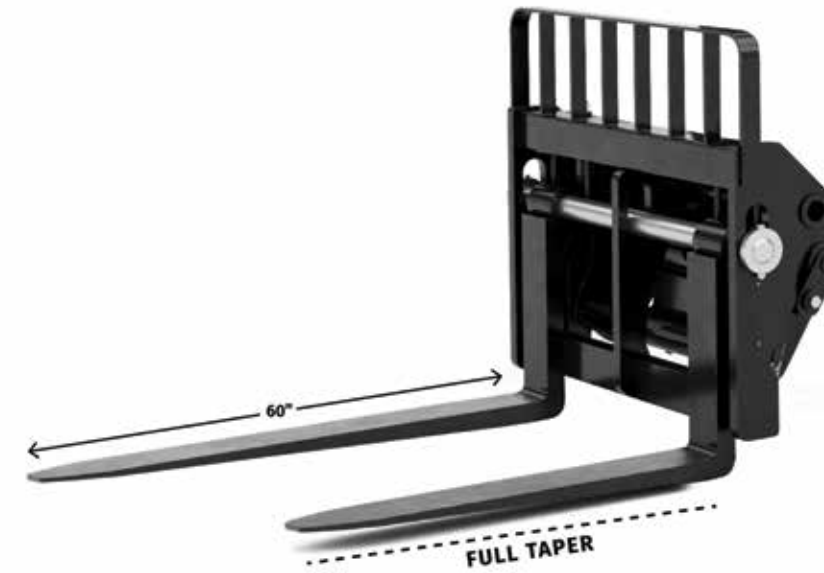
## Compatibility

Part numbers by model

PART NUMBER	804602	N820428
DESCRIPTION	Set of 2	Set of 2
SHAFT SIZE	2" Wide	2.5" Wide
MODELS		
MTA 6034	X	
MTA 6642	X	
MTA 642	X	
MTA 8042	X	
MTA 842	X	
MTA 8044	X	
MTA 10044	X	
MTA 10055	X	
MTA 1055	X	
MTA 12042		X
MTA 1242		X
MTA 12055		X
MTA 1255		X

Note: Capacity is 2,000lbs. per fork. Amount of forks must be adjusted based on capacity of machine.

# Lumber forks



## Technical Information

- Forks with larger width and full taper
- Available in 60" long only
- 2" pin for smaller machines
- 2 1/2" pin for 12,000+ lbs. machines

## Compatibility

Part numbers by model

PART NUMBER	804485	N820468
SHAFT SIZE	2" Wide	2.5" Wide
MODELS		
MTA 6034	X	
MTA 6642	X	
MTA 642	X	
MTA 8042	X	
MTA 842	X	
MTA 8044	X	
MTA 10044	X	
MTA 10055	X	
MTA 1055	X	
MTA 12042		X
MTA 1242		X
MTA 12055		X
MTA 1255		X

# Pallet forks

# Fork-mounted trash bin



## Technical Information

- 2" and 2 1/2" forks with 1/2 taper
- Available in 42", 48", 60" and 72" long



## Technical Information

- 5,000lbs (2268kg) capacity
- Interior size of 5yd3 (3.8m3), overall dimensions of 4' x 5' x 7' (1.2m x 1.5m x 2.1m)
- Open front for easy accessibility to load and unload material
- Mounts to any MTA unit with Pallet or Lumber Forks

## Compatibility

Part numbers by model

### 2" Wide Forks

PART NUMBER	N820024	50841750	804401	860703	847282	N820363	847283	808453
X	42"	42"	48"	48"	48"	60"	60"	72"
SHAFT SIZE	2" Wide	2" Wide	2" Wide	2" Wide	2" Wide	2" Wide	2" Wide	2" Wide
MODELS								
MTA 5519	X		X	X		X		
MTA 6034	X		X	X	X	X	X	X
MTA 6642	X		X	X	X		X	X
MTA 642	X		X	X	X		X	X
MTA 8042	X		X	X	X		X	X
MTA 842	X		X	X	X		X	X
MTA 8044	X		X	X	X		X	X
MTA 9050		X			X		X	X
MTA 10044					X		X	X
MTA 10055					X		X	X
MTA 1055					X		X	X
MTA 12042					X		X	X
MTA 1242					X		X	X
MTA 12055					X		X	X
MTA 1255					X		X	X

### 2 1/2" Wide Forks

PART NUMBER	807362	805333	N820469	807363	807364
X	48"	48"	48"	60"	72"
SHAFT SIZE	2.5" Wide	2.5" Wide	2.5" Wide	2.5" Wide	2.5" Wide
MODELS					
MTA 5519					
MTA 6034		X			
MTA 6642		X			
MTA 642		X			
MTA 8042		X			
MTA 842		X			
MTA 8044		X			
MTA 9050		X			
MTA 10044		X			
MTA 10055		X			
MTA 1055		X			
MTA 12042	X		X	X	X
MTA 1242	X		X	X	X
MTA 12055	X		X	X	X
MTA 1255	X		X	X	X

## Compatibility

Part numbers by model

PART NUMBER	50842169
FORK TYPE	Pallet or Lumber
MODELS	
MTA 6034	X
MTA 642	X
MTA 842	X
MTA 1055	X
MTA 1242	X
MTA 1255	X



Secure mounting with two locking pins and secondary system with chain behind fork carriage frame.





**Your dealer**



Scan and find out  
more information  
on [manitou.com](https://www.manitou.com)



This publication describes the versions and configuration possibilities of Manitou products which may differ in equipment. The equipment shown in this brochure may be standard, optional or not available depending on the version. Manitou reserves the right to change the specifications described and shown at any time without notice. The specifications shown are not binding on the manufacturer. For more details, contact your Manitou dealer. Non contractual document. Presentation and visuals of products are not contractual. The logos and visual identity of the company are the property of Manitou and may not be used without permission. All rights reserved. The photos and diagrams contained in this brochure are provided for reference purposes only. Manitou BF SA - Public limited company with a Board of Directors - Share capital: 39,547,824 euros - 857 802 508 RCS Nantes. Manitou